



SEPTEMBER ACTIVITY SHEET

Join Eddie at the Academy to earn stamps and win a prize!

ACTIVITY #1

Meet an Academy malacologist at **Scientist Saturday** on September 14, 1–4 p.m. You'll learn all about giant clams.*
*Hint for the game below!

ACTIVITY #2

Visit the **Investigation Station** near the Moose diorama on Fridays and Saturdays, 11 a.m.–3 p.m., to learn about cells, the "building blocks of life."

ACTIVITY #3

Do you love books and reading? Join us for **Story Time with Marty the Moose** in the Auditorium on Mondays at 11 a.m. or **Read to a Reptile** in *Outside In* on Tuesdays from 2–4 p.m.

BIOLOGY NAME GAME

We hope you'll be joining us at Members' Night on Friday, October 18 from 5–9 p.m. You'll meet our scientists and see their work. Most of them work within one of the branches of biology below. Can you match each of the living organisms to the branch of biology that studies them? You can use the key on the back to learn more about each branch.

Botany _____

Entomology _____

Ichthyology _____

Invertebrate _____

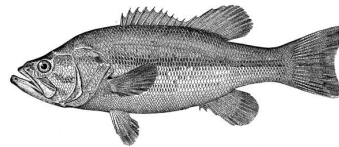
Paleontology _____

Malacology _____

Ornithology _____

Phycology _____

Vertebrate
Paleontology _____



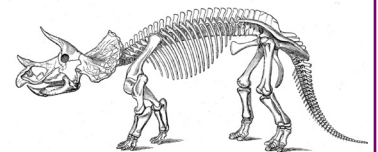
A. Sea Bass (Fish)



B. Snail (Mollusk)



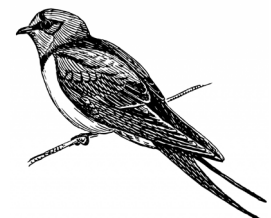
C. Grasshopper (Insect)



D. Triceratops (Dinosaur)



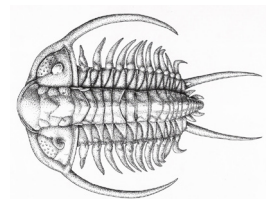
E. Fern (Plant)



F. Sparrow (Bird)



G. Seaweed (Algae)



H. Trilobite (Extinct Arthropod)

MEMBER



Don't forget your stamp.

Get your monthly stamp at the admissions desks. If you have eight stamps, it's time to collect your prize in the Academy Shop!

THE BRANCHES OF BIOLOGY AT THE ACADEMY

Complete the game on the front then use this key to learn more about some of the branches of biology.



Botany is the branch of biology dealing with plant life. Derived from the Greek word *botanē*, meaning "pasture."



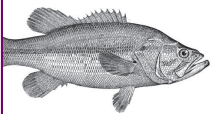
Malacology is the branch of zoology dealing with mollusks. Derived from the Greek word *malakos*, meaning "soft."



Entomology is the branch of zoology that deals with insects. Derived from the Greek word *entomon*, meaning "insect."



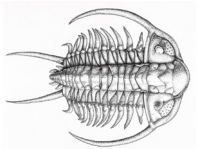
Ornithology is the branch of zoology dealing with birds. Derived from the Greek word *ornis*, meaning "bird."



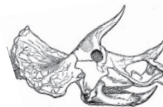
Ichthyology is the branch of zoology that deals with fishes. Derived from the Greek word *ikhthys*, meaning "fish."



Phycology is the branch of botany dealing with algae. Derived from the Greek word *phykos*, meaning "seaweed."



Invertebrate Paleontology is the branch of paleontology (the study of fossils) dealing with invertebrate fossils.



Vertebrate Paleontology is the branch of paleontology (the study of fossils) dealing with vertebrate fossils.

UPCOMING EVENTS

Scientist Saturday

September 14
1–4 p.m.

Dinos After Dark

September 27
4–8 p.m.

Members' Night

October 18
5–9 p.m.



The Academy of
Natural Sciences
of DREXEL UNIVERSITY

Regular Hours:
Monday–Friday,
10 a.m.–4:30 p.m.

Weekends and Holidays,
10 a.m.–5 p.m.

1900 Benjamin Franklin Parkway
Philadelphia, PA 19103
215-299-1022

ANSP.ORG