



# November Activity Sheet



The Academy of  
Natural Sciences  
of DREXEL UNIVERSITY

## Activity #1:

**Wild Wizarding Weekend** is November 24–26! If you were a wizard, which of the owls on the back of this page would you choose for sending letters? \_\_\_\_\_

## Activity #2:

Thanksgiving is this month. What part of the Academy are you most thankful for? \_\_\_\_\_  
Why? \_\_\_\_\_

## Activity #3:

Visit each of the dinosaurs below. The newly renovated **Dinosaur Hall** is now open, where you'll find 1–5. You'll find *Elasmosaurus* (not a dinosaur, but a marine reptile) swimming above the main lobby!

## Regular Hours:

Monday–Friday,  
10 a.m.–4:30 p.m.

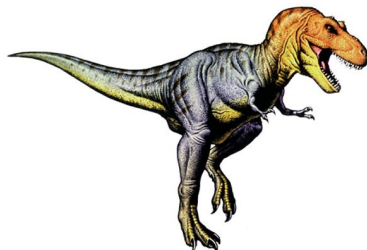
Weekends and  
Holidays,  
10 a.m.–5 p.m.

Get your **November** stamp  
at the Visitor Services Desks.

**If you have eight stamps,  
it's time to collect your  
prize in the Academy Shop!  
New prize available!**

## Dinosaur Thanksgiving

A dinosaur Thanksgiving would have an herbivore table and a carnivore table. Label each dinosaur with herbivore or carnivore so they sit at the correct table.



1.) T. rex: \_\_\_\_\_



2.) Pachycephalosaurus: \_\_\_\_\_



3.) Deinonychus: \_\_\_\_\_



4.) Chasmosaurus: \_\_\_\_\_



5.) Hadrosaurus: \_\_\_\_\_



6.) Elasmosaurus\*: \_\_\_\_\_

\*Marine reptile, but still loves dinosaur Thanksgiving!

# Exhibits and Events

## ***Tiny Titans: Dinosaur Eggs and Babies*** **Open through January 15, 2018**

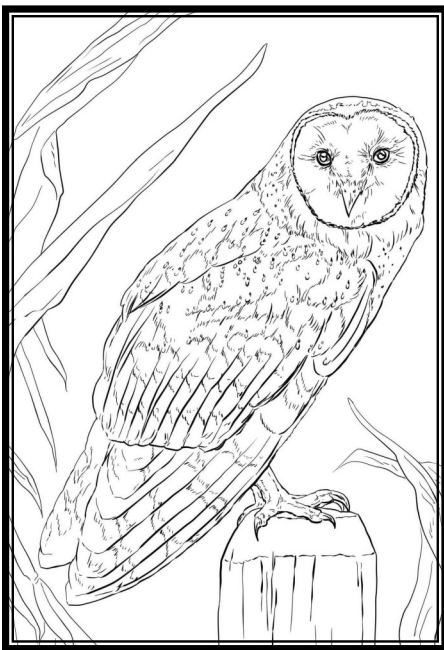
Take a rare and exciting look at dinosaurs through their eggs, nests, and embryos.

## ***Wild Wizarding Weekend*** **November 24–26**

Explore the magical world of the Academy's phenomenal beasts with a weekend of spellbinding, hands-on activities.

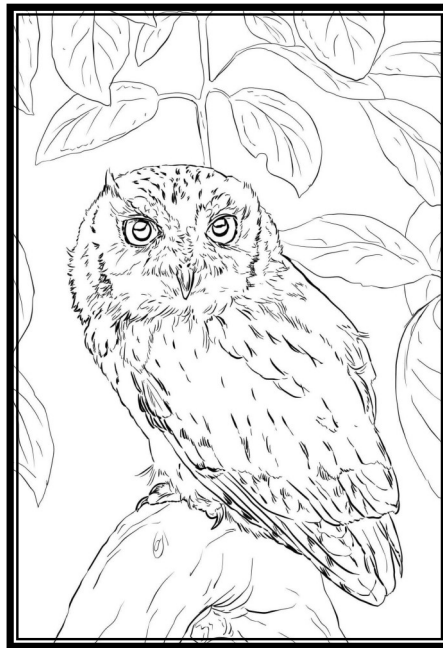
## Owl Post

If wizards in Pennsylvania use native owls for delivering their letters, they might use one of the species below. Learn more about these amazing creatures and give them some creative color schemes.



### ***Barn Owl***

The barn owl has a wingspan ranging from 31 to 37 inches. It can be found throughout Pennsylvania. Barn owls do not “hoot” but rather communicate with long whistles and hisses.



### ***Screech Owl***

The Eastern screech owl is short and stocky. Female screech owls are larger than the males.

Screech owls communicate with an even-pitched trill that almost sounds like a horse whinny.



### ***Great Horned Owl***

The great horned owl is a fierce predator. They can have a wingspan of up to 60 inches! Great horned owls have a deep, soft hoot with the rhythm:  
hoo-h'HOO-hoo-hoo.