

# Kids Club February Activity Sheet

THE ACADEMY  
OF NATURAL SCIENCES  
of DREXEL UNIVERSITY



**Activity #1:** Explore our new special exhibit,  
*Tarantulas: Alive and Up Close.*  
What is your favorite part?  
\_\_\_\_\_

**Activity #2:** Dinosaur Hall is the best place to  
go to learn about Mesozoic reptiles. Name one fact  
you learned while walking through Dinosaur Hall.  
\_\_\_\_\_

Get your **February** stamp at the Visitor  
Services Desks. Do you have **eight** stamps yet?  
**If you do, it's time to collect your prize  
in the Academy Shop!**

**Regular Hours:**  
Monday–Friday,  
10 a.m.–4:30 p.m.

Weekends and  
Holidays,  
10 a.m.–5 p.m.

## Tarantula Trivia

Fill in the blank spaces to test your  
knowledge on tarantulas!

1. Tarantulas are known as a type of \_\_\_\_\_.
2. Tarantulas have \_\_\_ legs and \_\_\_ fangs.
3. Male tarantulas are much \_\_\_\_\_ than female tarantulas in size.
4. Tarantulas do not spin webs like other spiders, but they do produce \_\_\_\_\_.
5. Tarantulas hunt while you and I are asleep, so they hunt at \_\_\_\_\_ so it is easier to sneak up on their prey.

Answers to back (begin top of page, move clock-  
wise): 1. Cephalothorax, 2. eyes, 3. fangs, 4. Pedi-  
pals, 5. hairs, 6. abdomen, 7. spinnerets, 8. silk

Now Open!

# Tarantulas

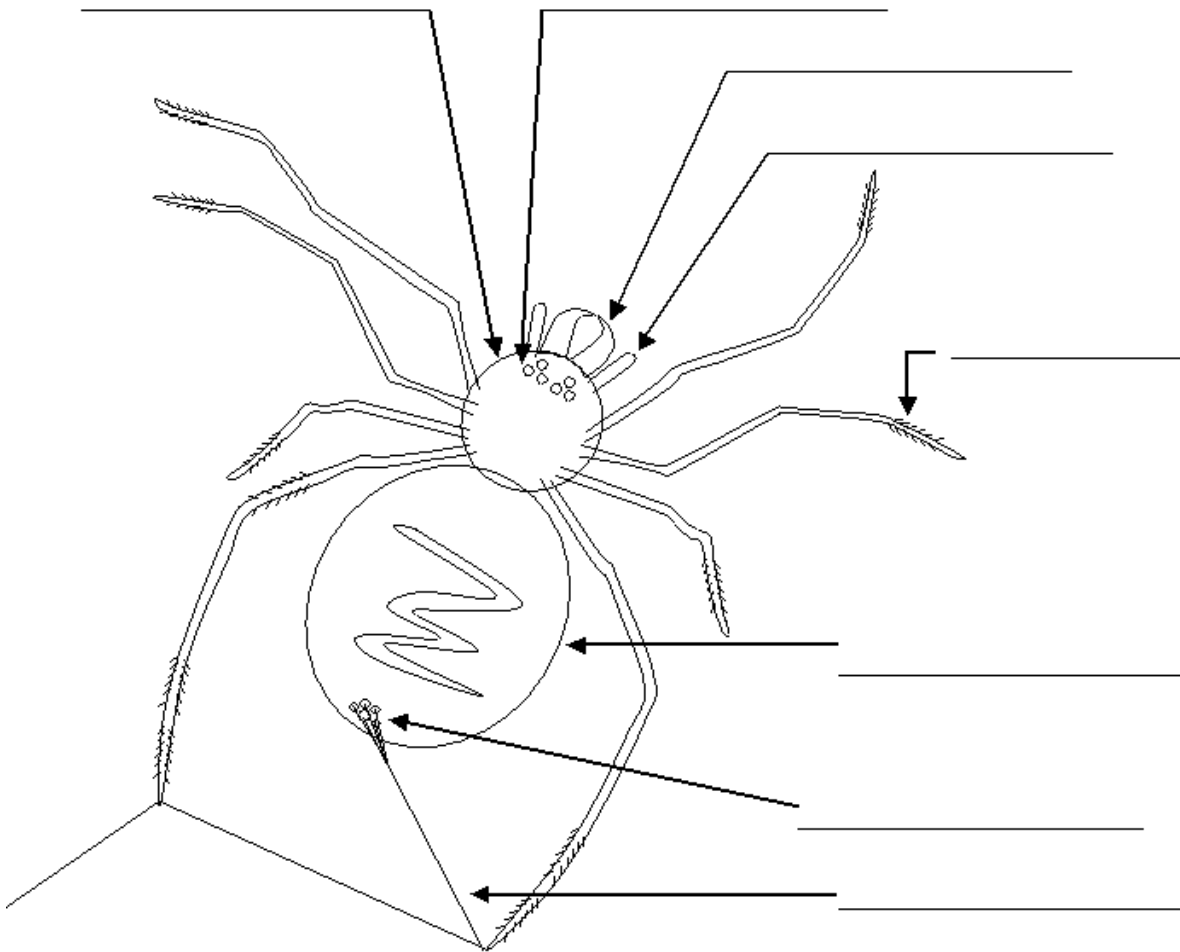
*Alive and Up Close*

January 30—May 30

In the Academy's newest hands-on exhibit, *Tarantulas: Alive and Up Close*, you will come face-to-face with a stunning array of live tarantulas ... fangs and all.

## Parts of a Spider

Label the different parts of a spider with the words listed below



Word Bank:

1. Abdomen
2. Pedipalps
3. Spinnerets

4. Eyes
5. Silk
6. Cephalothorax

7. Fangs
8. Hairs

Answers to front: 1. spider, 2. 8/2, 3. smaller, 4. silk, 5. right