

# PARKWAY MUSEUMS DISTRICT®

2019–2020 GUIDE

**SPECIAL  
OFFERS  
INSIDE**



BENJAMIN FRANKLIN PARKWAY  
PHILADELPHIA, PA

---

[parkwaymuseumsdistrict.org](http://parkwaymuseumsdistrict.org)

## Academy of Natural Sciences of Drexel University

[ansp.org](http://ansp.org) | 215-299-1000

Enter a world of science where T. rex reigns, live butterflies perch on your shoulder and a new discovery waits at every turn. Discover what “awesome” really looks like by touching a live animal, encountering an enormous owl, brushing a fossil, watching paleontologists at work, and walking in the footsteps of dinosaurs. The Academy is naturally fun and engaging for all ages!

**Open** Monday–Friday 10 am–4:30 pm, Weekends 10 am–5 pm. Closed Thanksgiving, Christmas Eve, Christmas Day and New Year’s Day.

**Admission \$ (Save \$2 at [ansp.org](http://ansp.org). No code needed.)**

## Association for Public Art

[associationforpublicart.org](http://associationforpublicart.org) | 215-546-7550

Art for everyone, anytime! Explore Philadelphia’s outdoor sculpture for free by phone, online, or mobile app with the Association for Public Art’s Museum Without Walls™: AUDIO program. Dial 215-399-9000, visit [museumwithoutwallsaudio.org](http://museumwithoutwallsaudio.org), or search MWW AUDIO in the App Store or Google Play. Established in 1872, the Association for Public Art commissions, places, and cares for a significant collection of public art along the Benjamin Franklin Parkway and throughout Philadelphia.

## The Barnes Foundation

[barnesfoundation.org](http://barnesfoundation.org) | 215-278-7000

Explore one of the finest collections of impressionist, post-impressionist and early modernist paintings in the world including works by Renoir, Cézanne, Matisse, and Picasso, plus important African sculpture, Pennsylvania German furniture, and decorative arts. The legendary collection is an experience like no other and is housed in a state-of-the-art building which also includes a special exhibitions gallery, a shop, a restaurant and breathtaking event spaces. With classes, tours, PECO Free First Sunday Family Days, and First Friday events, discover why you’ll never stop seeing the Barnes.

**Open** Wednesday–Monday 11 am–5 pm. Closed Tuesday. Also open 6–9 pm every First Friday and other select evenings.

**Admission \$ Tickets can be easily purchased on-site, online, or by calling 215-278-7000 (Save \$5 on General Admission with code PMD2019)**

## Cathedral Basilica of Saints Peter and Paul

[cathedralphila.org](http://cathedralphila.org) | 215-561-1313

With its majestic façade, vaulted dome, ornate main altar and impressive side chapels, the Cathedral is one of the most architecturally-eminent structures in Philadelphia and the mother church of the Archdiocese of Philadelphia. The Tomb of Saint Katherine Drexel is located here. Tours of the Cathedral are available.

**Open** every day for the Sacred Liturgy, prayer, and visits.

**Mass Schedule** Sunday Mass: Anticipated Mass at 5:15 pm; Saturday, 8 am, 9:30 am, 11 am (Solemn Mass), 12:30 pm (in Spanish), 6:30 pm; Weekday Mass at 7:15 am and 12:05 pm; Saturday at 12:05 pm. **Confessions everyday.**

**Admission Free**

## Eastern State Penitentiary

[easternstate.org](http://easternstate.org) | 215-236-3300

With grand architecture and strict discipline, Eastern State was the world’s first true “penitentiary,” designed to inspire penitence, or true regret. Its vaulted, sky-lit cells once held many notorious lawbreakers. Tours include the cellblocks, solitary punishment cells, Al Capone’s Cell and Death Row. Eastern State is home to the #1 haunted attraction in the country—*Terror Behind the Walls*.

**Open** every day 10 am–5 pm (last entry 4 pm).

Closed Thanksgiving, Christmas Eve, Christmas Day, New Year’s Day. *Not recommended for children under the age of 7.*

**Admission \$**

## Fairmount Water Works

[fairmountwaterworks.org](http://fairmountwaterworks.org) | 215-685-0723

Excitement at the Fairmount Water Works is everywhere – in the galleries, the theater, special exhibits, and by the river’s edge. Known for its historic neoclassical architecture, the site is one of Philadelphia’s most recognizable landmarks. It operated as a pumping station from 1815-1909, and since 2003, as an urban environmental education center. In 2016, the *Freshwater Mussel Demonstration Hatchery* exhibition opened, raising baby mussels every day. To date, more than 550,000 people have visited, learning about the diversity of life in our waterways and how to become stewards of our shared water resources.

**Open** Tuesday–Saturday 10 am–5 pm, Sunday 1–5 pm. Closed Mondays and legal holidays.

**Admission \$ (Pay What You Wish)**

## The Franklin Institute

**fi.edu | 215-448-1200**

Discover something new at The Franklin Institute and explore the fun side of science through thirteen cutting-edge hands-on exhibitions, an immersive virtual reality experience, shows in the Fels Planetarium, and sky viewing in the Joel N. Bloom Observatory. Explore the inner workings of the human heart in the iconic *Giant Heart* and find out what makes your neurons fire in the award-winning *Your Brain* exhibit.

**Open** daily 9:30 am–5 pm, extended hours July–Labor Day. Closed Thanksgiving, Christmas Day and New Year's Day.

**Admission \$**

## Free Library of Philadelphia–Parkway Central

**freelibrary.org | 215-686-5322**

The Parkway Central Library is the cornerstone of the Free Library system, containing millions of items and many special collections, including treasures such as Grip, Charles Dickens's pet raven; illuminated medieval manuscripts; and ancient cuneiform tablets. Parkway Central also features hundreds of special programs and events, including the renowned Author Events Series and cooking classes at the Culinary Literacy Center. Parkway Central opened three new Moshe Safdie–designed spaces to the public in the spring of 2019. Free Wi-Fi.

**Open** Monday–Thursday 9 am–9 pm, Friday 9 am–6 pm, Saturday 9 am–5 pm and Sunday 1–5 pm.

Closed national holidays.

**Admission Free**

## Friends Select School

**friends-select.org | 215-561-5900**

Friends Select School, the Center City Quaker school that sparks fascination, traces its roots back to 1689. Situated squarely at the center of the Parkway Museums District, Friends Select is flanked by City Hall on one end and the Philadelphia Museum of Art on the other. Friends Select students PK-12 are beneficiaries of a sophisticated learning experience through curricular partnerships with Parkway museums and other city institutions and resources.

## Horwitz-Wasserman Holocaust Memorial Plaza

**philaholocaustmemorial.org | 215-809-2474**

As you enter the Benjamin Franklin Parkway at 16th and Arch St., you can explore the United States' first public Holocaust memorial, *Monument to Six Million Jewish Martyrs*, created in 1964 by world-renowned artist Nathan Rapaport. The Plaza was radically redesigned in 2019 to provide an educational and reflective experience for adults and children of all ages. The Plaza now also features a free app, IWalk, which guides visitors through the park using personal testimonials from Holocaust survivors and witnesses.

## Moore College of Art & Design

**moore.edu | 215-965-4000**

Founded in 1848, Moore is the first and only women's visual arts college in the US for undergraduates. Moore also offers co-educational programs in graduate studies, adult continuing education and youth education, including Young Artists Workshop and the Summer Art & Design Institute. Throughout the year, Moore offers free exhibitions, films and lectures, and produces biannual fashion shows in May and December. The Galleries at Moore showcase the work of regional, national and international contemporary artists and designers. The Art Shop at Moore offers a variety of artwork created by Moore alumni and current students, including wall art, jewelry, clothing and ceramics.

**The Galleries at Moore:** Monday–Saturday, 11 am–5 pm. Closed Sundays and all academic and legal holidays.

**Admission Free**

**The Art Shop at Moore:** Monday–Saturday, 10 am–6 pm. Closed Sundays. Check online for special holiday and summer hours.

**Visit [parkwaymuseumsdistrict.org](http://parkwaymuseumsdistrict.org)  
for details on events and exhibitions,  
a great walking tour and so much more!**

## Pennsylvania Horticultural Society

**PHSonline.org | 215-988-8800**

The Pennsylvania Horticultural Society plays a vital role in our region's well-being and beauty. PHS maintains a network of public gardens including those at Logan Square and the Azalea Garden along the Benjamin Franklin Parkway, conducts greening initiatives in 250 neighborhoods and presents the renowned Philadelphia Flower Show. Whether building social connections, livable communities, or growing access to fresh food and economic opportunity, PHS offers everyone a path to garden for the greater good. Volunteer, donate, or join us at PHSonline.org.

**Open** Monday–Friday 9:30 am–5 pm (McLean Library).

**Admission Free**

## Philadelphia Museum of Art

**philamuseum.org | 215-763-8100**

Explore the cultural heart of Philadelphia, from our world-renowned collection of modern, contemporary, early American, and Impressionist art to our performances and programs for all ages. You'll also discover remarkable architectural spaces, including an Indian Temple Hall and a Japanese teahouse, and a breathtaking collection of medieval armor.

**Open Main Building:** Tuesday–Sunday 10 am–5 pm, Wednesday and Friday until 8:45 pm.

**Perelman Building:** Tuesday–Sunday 10 am–5 pm. Closed Mondays. **Both Buildings:** Open select holiday Mondays. Hours subject to change.

**Admission \$ (Children 12 and under admitted free) Every Wednesday night and First Sundays: Pay What You Wish**

## Rodin Museum

**rodinmuseum.org | 215-763-8100**

Head down the Parkway to the Rodin Museum's elegant Beaux-Arts–style building and tranquil garden. There you'll experience one of the greatest collections of works by Auguste Rodin, the father of modern sculpture. Every Summer weekend from May 18 enjoy our garden bar with beer, wine, outdoor music, and gallery access until 8:00 p.m. Entrance to the gardens is free.

**Open** Wednesday–Monday 10 am–5 pm. Closed Tuesdays.

**Admission \$ (Pay What You Wish)**

## The Windsor Suites

**thewindsorsuites.com | 877-784-8379**

Ignite your spirit of discovery at The Windsor Suites, a downtown Philadelphia hotel, where imaginative design, modern comfort and local authenticity collide. You'll absorb the energy of Philadelphia the moment you step foot in the lobby, where our stunning 40' spiral sculpture cascades from the catwalk, while cozy nooks with wood paneled ceilings and floating glass walls await your discovery. Enjoy our two onsite full-service restaurants and bars, 24-hour fitness center, complimentary yoga classes and three flexible meeting spaces. We can't wait to show off our newly renovated outdoor seasonal rooftop pool on the hotel's 24th floor with skyline views, and eight premium concierge level suites (coming soon).

## Special Park Spaces



Photo by Judi Rogers

*Swann Memorial Fountain, Logan Square*

The Parkway Museums District is home to many exceptional park spaces. In addition to the centrally located Logan Square, be to sure visit these spots. (*Locations are noted on the map:*)

**Cret Park**

**Dilworth Park**

**Eakins Oval**

**LOVE Park**

**Sister Cities Park**



## History

Stretching from City Hall to the Philadelphia Museum of Art, Philadelphia's grand, tree-lined Benjamin Franklin Parkway is flanked by some of the city's most acclaimed institutions. Visitors to the Parkway Museums District will discover a cultural mecca with world-class museums and educational institutions, the magnificent *Swann Memorial Fountain*, Cathedral Basilica of Saints Peter and Paul on Logan Square and the world famous "Rocky" steps. The Parkway has an international flavor, lined with flags from around the world. The Benjamin Franklin Parkway represents one of the earliest examples of urban renewal in the United States. The grand boulevard was constructed to ease heavy industrial congestion, connect Center City to Fairmount Park and restore Philadelphia's natural and artistic beauty.

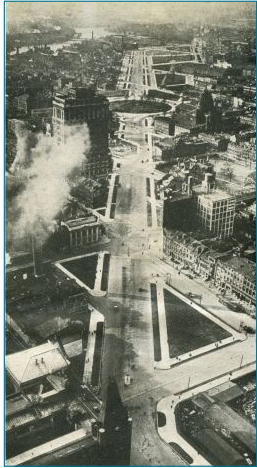


Photo by Darryl Moran

Beginning in 1892, City Council received the first proposal and petition to develop the Fairmount Parkway, passed a bill to begin plans for building it, adopted a plan developed by Horace Trumbauer, Clarence Zantzinger and Paul P. Cret and finally in 1917, ten years after ground-breaking, adopted French urban planner Jacques Gréber's design to emulate the Champs-Élysées in Paris. In 1937, the name of the Fairmount Parkway was officially changed to honor the city's most celebrated citizen, Benjamin Franklin. In 2017-2018, the Benjamin Franklin Parkway celebrated Parkway 100, in commemoration of the iconic boulevard's centennial.

*Special thanks to our Parkway Champions: PNC and The Logan Hotel.*

## Public Art

The Parkway Museums District is home to over 30 works of public art, featuring masterpieces by three generations of Calders, including the *Swann Memorial Fountain*, *William Penn* on top of City Hall and the *Shakespeare Memorial*, as well as Auguste Rodin's *The Thinker*, Robert Indiana's iconic *LOVE* and *AMOR* sculptures, Emmanuel Frémiet's *Joan of Arc*, and Mark di Suvero's *Iroquois*. Learn more about the Parkway's public art at [associationforpublicart.org](http://associationforpublicart.org).

## Dining Options

### Academy Café

Academy of Natural Sciences of Drexel University  
19th & Ben Franklin Parkway

### Capriccio at Cret Park

16th & Ben Franklin Parkway

### Con Murphy's

The Windsor Suites  
17th & Ben Franklin Parkway

### Dilworth Park Café

Dilworth Park,  
Philadelphia City Hall

### Franklin Foodworks and Atrium Café

The Franklin Institute  
20th & Ben Franklin Parkway

### Garden Restaurant and Canvas Coffee Bar

The Barnes Foundation  
20th & Ben Franklin Parkway

### Little Pete's

The Philadelphian  
24th & Pennsylvania Ave

### Stir Restaurant and Café

(Main Building)

### Perelman Café

(Perelman Building)

Philadelphia Museum of Art  
26th & Ben Franklin Parkway

### Sister Cities Café

Sister Cities Park  
18th & Ben Franklin Parkway

### Urban Farmer Restaurant

The Logan Hotel  
18th & Ben Franklin Parkway



Facebook: @parkwaymuseumsdistrict

Instagram: @parkwaymuseumsdistrict

Twitter: @parkwaymuseums

Pinterest: @parkwaymuseums

# PARKWAY MUSEUMS DISTRICT®



## Map Locations

1. Academy of Natural Sciences of Drexel University
2. The Barnes Foundation
3. Cathedral Basilica of Saints Peter and Paul
4. Cret Park
5. Dilworth Park
6. Eakins Oval
7. Eastern State Penitentiary
8. Fairmount Park
9. Fairmount Water Works
10. The Franklin Institute
11. Free Library of Philadelphia – Parkway Central
12. Friends Select School
13. Horwitz-Wasserman Holocaust Memorial Plaza
14. The Logan Hotel
15. LOVE Park
16. Moore College of Art & Design
17. Pennsylvania Horticultural Society
18. Philadelphia Museum of Art
19. Rodin Museum
20. Sister Cities Park
21. The Windsor Suites

## Directions

**From 95 North** take Exit 22 for 676 West / Vine Street Expressway, Exit at Ben Franklin Parkway.

**From 95 South** take Exit 22 for 676 West / Vine Street Expressway, Exit at Ben Franklin Parkway.

**From 76 West** take Exit 344 for 676 East, Exit at Ben Franklin Parkway / 23rd Street.

**From 76 East** take Exit 344 for 676 East Central Philadelphia, Exit at Ben Franklin Parkway / 23rd Street.

Also accessible by public transportation via **SEPTA** bus routes 2, 7, 32, 33, 48, and 49, regional rail at Suburban Station, City Hall stop on **Market-Frankford** and **Broad Street** subway lines and ride **PhillyPHLASH** (late March thru late December).

Check websites for route and schedule information:  
**SEPTA.org** and **RidePhillyPHLASH.com**

# PARKWAY MUSEUMS DISTRICT®

## Save \$2.00

Take \$2 off full price adult admission (for up to 4 adults) at select Parkway Museums District® institutions. *Offer expires 12/31/20.*

Only Valid At: Academy of Natural Sciences of Drexel University, Eastern State Penitentiary, The Franklin Institute, and the Philadelphia Museum of Art. Must present coupon at the ticketing desk to redeem discount. PMD2019



THE BARNES FOUNDATION

## \$5.00 off

Receive \$5 off general admission to the Barnes Foundation.  
*Offer expires 12/31/20*

Offer limited to one per customer. Not redeemable for cash. Cannot be combined with any other offer or discount from the Barnes Foundation. Not valid on public programs or events. Must present coupon at the ticketing desk to redeem discount.  
20th & the Parkway, 215-278-7000, [barnesfoundation.org](http://barnesfoundation.org) PMD2019



## \$10 off

Save \$10 off your purchase of \$20 or more at the Art Shop (excluding gift certificates). *Offer expires 12/31/20.*

Offer limited one per customer. Not redeemable for cash. Cannot be combined with any other offer or discount from The Art Shop at Moore College of Art & Design, 20th and the Parkway, (215) 965-8586. [moore.edu/theartshop](http://moore.edu/theartshop) PMD2019



## THE FRANKLIN INSTITUTE

## 20% off

Receive 20% off your purchase at the SciStore (minimum purchase of \$35 required).  
*Offer expires 12/31/20.*

Offer limited one per customer. Not redeemable for cash. Minimum purchase of \$35 at SciStore required to receive discount. Cannot be combined with any other offer or discount from The Franklin Institute. 20th and the Parkway (215) 448-1200 [www.fi.edu](http://www.fi.edu) PMD2019



The Academy of  
Natural Sciences  
of DREXEL UNIVERSITY

## 10% off

Save 10% on purchases over \$10 in our Academy Café  
*Offer expires 12/31/20.*

Offer limited to one per customer. Not redeemable for cash. Cannot be combined with any other offer or discount from the Academy of Natural Sciences of Drexel University.  
1900 Benjamin Franklin Parkway, 215-299-1000 [www.ansp.org](http://www.ansp.org)  
Some restrictions may apply. PMD2019