

MEASURABLE  
*Momentum*

*2015 / 2016 Annual Report*



THE ACADEMY OF NATURAL SCIENCES  
*of* DREXEL UNIVERSITY





*Dear Friends,*

As we look ahead to our 205th year, we are excited to share our recent scientific discoveries, achievements in education, and advancements within the field of environmental research. We also must focus on our growth and momentum and the importance of succession planning. As you may know, the Academy's leadership is in transition. We welcomed Peter Austen as our new Chair of the Board this past summer. Next summer, George Gephart will be retiring to Charleston, South Carolina, after seven years as President and CEO, opening the door for a new leader to guide us into our future.

During the past seven years, we have worked tirelessly to advance research, education, and public engagement in biodiversity and environmental science. We forged a unique affiliation with Drexel University—a partnership that has become a model for growth for institutions around the country. In collaboration with Drexel University, we created the Department of Biodiversity, Earth & Environmental Science to prepare the next generation of scientists to address critical issues such as climate warming. We have formed an engaged and empowered Board of Trustees, leveraged our foundational role in water quality research, united our natural and environmental scientists under the common purpose of broad human impact and public engagement, and launched major campaigns to improve our museum and expand our collections. We are financially stronger than ever before, and we hope you share our joy in being a part of the rejuvenation of this amazing institution.



We have so much to look forward to, including two campaigns that are positioning the Academy for growth in science, research, and education. In ornithology, we have raised \$1 million in our efforts to situate our research program among the best in the country. We also have launched our campaign to repurpose our Library Reading Room as a signature exhibit space for public engagement and education. In addition to a next-generation natural history visitor experience that will preserve the historic details of the space, we are envisioning a modernized library research center behind the scenes. We can't wait to share our progress with you.



The Academy would not be as strong as it is today without support from you, our most loyal contributors. We trust that you, together with our future president, our passionate staff, our talented volunteers, and our Trustees, will continue to guide us toward a sustainable future. The opportunities for our years ahead are boundless, and we are counting on you as we push our museum and research enterprise forward into our 205th year of discovery.

All the best,

  
George W. Gephart, Jr.  
President and CEO

  
Peter A. Austen  
Chair, Board of Trustees



# Research Supports 15 Million People



# \$4,425,000

*of William Penn Foundation funds re-granted by the Academy to researchers in the Delaware River Watershed*



# 129

*stream reaches visited in the Delaware River Watershed*



*In 2015, the Academy announced the Delaware Watershed Research Fund, a \$5 million research initiative to address major environmental challenges of today's watersheds.*

The Delaware Watershed Research Fund is an outgrowth of the Delaware River Watershed Initiative, a multi-year effort of more than 50 environmental nonprofits and numerous public and private partners to monitor, protect, and restore conditions in the streams, rivers, and landscapes in eight targeted regions within the watershed. Through the initiative, the William Penn Foundation has been a lead funder and provided more than \$40 million over three years to the 50 nonprofit organizations, including the Academy, that are working cooperatively to protect high-quality streams and restore portions of damaged watersheds from stresses such as urban stormwater and agricultural runoff.

This work, in places ranging from the Poconos and upstate New York to the Brandywine Valley and New Jersey's Delaware River Bayshore—is complemented by a substantial water quality monitoring program designed and led by the Academy. We share this work with the public through presentations, including Town Square and Tapping Our Watershed programming.

# 14

*countries visited by Academy researchers*

## Sampling With the Stars

In May 2016, we welcomed actor and water quality activist Mark Ruffalo for a full day of Academy events in support of the Delaware River Watershed Initiative. Ruffalo joined our field crew and four students from the Academy's Women In Natural Sciences program to collect insects, measure water temperature and chemical properties, and collect algae for later testing. He spoke with representatives of the Delaware River Watershed Initiative and rallied water quality advocates in the Academy's auditorium.

# \$1,655,134

*National Science Foundation dollars awarded to Academy researchers*

# 428

*total sampling events in the field by Academy environmental scientists*



# Drexel Partnership: Five Years Strong



# 57

*students worked with the Academy through Drexel University's Cooperative Education program*

# 171

*undergraduate and graduate students enrolled in the Academy and Drexel University's Biodiversity, Earth & Environmental Science program*



## Watershed Collaboration

In April 2016, four Drexel University professors received funds to study ecosystems within the Delaware River Watershed thanks to a \$200,000 grant administered by the Academy with financial resources provided by the William Penn Foundation. These professors' research will complement the Academy's work with the Foundation by focusing on studying drinking water contamination, capturing runoff by designing community gardens and wetlands in vacant lots, and evaluating future use and function of our valuable watershed.

*Through Drexel University's Cooperative Education Program, 57 students gained career experience while making measurable contributions in our museum and behind-the-scenes collections.*

Several students, including Nicholas Blase, Valerie Coghlan, and Andrew Homiak, supported efforts to digitize, or create digital records for scientific specimens in our collections. In the Botany Collection, Blase and Coghlan transcribed information from images of printed or handwritten labels on packets holding lichens and bryophytes and entered information from these labels into a publicly searchable database. In the Academy's Entomology Collection, Andrew Homiak (page 5, top) photographed insect species collected in the New Jersey Pine Barrens and added photos to a web-accessible database.

Drexel students Emily Ostrow (above and page 5, center) and Raffaella Marano (page 5, bottom) contributed to Academy research behind the scenes and around the world. Ostrow traveled to the mountains of Nicaragua to collect and study birds and their parasites on behalf of the Academy's Ornithology Department. Marano supported the fish biology team's efforts to survey freshwater fishes for the Delaware River Watershed Initiative. During her time at the Academy, she conducted graduate research on endocrine disruption in freshwater fishes of the Delaware and Susquehanna basins using recent samples and historic specimens from the Ichthyology Collection. We are grateful for the support of these fantastic students and their peers as they build future careers in the natural and environmental sciences.

## Outreach in West Philadelphia

The Academy's Education Department partnered with Drexel's West Philadelphia Action for Early Learning Initiative, a collaboration of social service and education agencies and community stakeholders working to create an educational support system for neighborhood families. Our team provided STEM (Science, Technology, Engineering, and Math) programming to teachers and students in preschools in the Mantua Promise Zone, where many families face issues of poverty and high need. Educators taught inquiry-based learning workshops to preschool teachers and assistants, modeled hands-on science activities, and spent time interacting with students in the classroom. Our educators also provide free STEM activities at block parties, fairs, and community events citywide.



# 4000

*Drexel students learned from Academy researchers in University classrooms*



# Grants Benefit Countless Students



14,494

miles traveled by bus and plane by WINS students



289

teens served through the Academy's participation in the Greater Philadelphia Cultural Alliance's STAMP (Students at Museums in Philly) program

*The Academy's Women In Natural Sciences program received a \$50,000 grant from the Underwriters Laboratories (UL) for Innovation in Environmental Science Education in recognition of its cross-cultural conversations on climate change.*

The funds helped 16 WINS sophomores and juniors travel to Costa Rica to study climate change in relation to biodiversity. The students visited many different ecosystems, including the beach, scrub forest, lower forest, rainforest, and cloud forest. Upon their return they created lessons on Costa Rican biodiversity for presentation in museum and community programs.

WINS is a free after-school and summer science enrichment program that has introduced hundreds of high school women to future careers in science and other professions through hands-on science workshops, career and college exploration, and positive youth development.

## The Nature of Gaming

Educators from the Academy and the Philadelphia Writing Project at the University of Pennsylvania's Graduate School of Education collaborated to create the GAME ON! Model, which encourages middle school youth to create, prototype, and play games in order to better understand the scientific process and science in general. Funded by the National Writing Project and the Association of Science-Technology Centers through a grant from the National Science Foundation, the program enables students to examine the nature of gaming, explore the Academy's collections, and present their games to the public at the annual Philadelphia Science Festival.

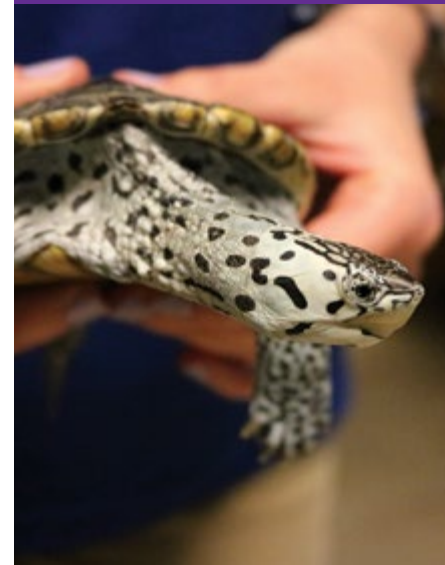


44,642

students and teachers visited the museum during field trips

696

school buses transported children to the Academy for field trips and lessons



35,000

students served through the Academy on the Go program

23,000

miles driven for Academy outreaches at local and regional schools





# Thousands of Visitors, One Famous Dinosaur

*Academy Dinosaur Hall Coordinator and paleo-illustrator Jason Poole and Michigan street artist David Zinn brought the famous Hadrosaurus foulkii back to life through two renderings in the Academy's Art of Science Gallery.*

Each artist depicted *Hadrosaurus* in colorful chalk on a huge blackboard for Academy visitors. Their lifelike impressions formed the backdrop of *Drawn to Dinosaurs*, an intimate exhibit featuring a full cast of the dinosaur, a touchable copy of a *Hadrosaurus* skin impression, and a time-lapse video of the drawing. *Hadrosaurus* was discovered in Haddonfield, New Jersey in 1858, and in 1868 the Academy created and displayed its full cast, making the museum the first place in the world where the public could go to see a dinosaur.



# 104

*live animals cared for in the Academy's Live Animal Collection*

# 530,699

*tickets, program registrations, membership purchases, donations, and other sales made through the Academy's brand-new ticketing system*



# 7,000

*bees in the hive in Outside In*



# 40

*feet of snake in the Reptiles: The Beautiful and the Deadly exhibit*

# 172,548

*visitors to the Academy, many to see exciting special exhibits, including Animal Grossology, Reptiles: The Beautiful and the Deadly, and Tarantulas: Alive and Up Close*

# 12

*new trees planted on the Academy's property*





# \$1 Million Changes Face of Ornithology Department



26  
new species described by Academy scientists



\$1 MILLION

raised for a new Ornithology Endowment Fund



28  
accessions conserved in  
the Academy Archives



159,196

specimens digitized by Academy scientists

*Early this summer, ornithologists Jason Weckstein, PhD, and Nate Rice, PhD, spent a month traveling along the banks of the Purus River in the southwestern Amazon. They were studying the biodiversity of Amazonian birds and their parasites.*

Supported by Weckstein's generous grant from the National Science Foundation, they were documenting local birds and their parasites to discover how they may play a role in parasitic diseases such as malaria. The researchers returned to the Academy to add 400 specimens representing 137 species to the Academy's Ornithology Collection.

For the first time in more than 80 years, a second ornithology expedition was added to the summer roster. While Weckstein and Rice were in Brazil, ornithology co-op and Drexel student Emily Ostrow and Academy post-doctoral fellow Therese Catanach, PhD, were studying birds and their parasites in the mountains of Nicaragua. Not since the 1930s have we had adequate funds and researchers for two Academy ornithology collecting expeditions to occur concurrently. Specimens collected on both expeditions will allow our team to describe new parasite species, understand diversity of birds and parasites in these two biodiverse locations, and gain new insights into the biology of bird communities in these understudied tropical regions.

Expeditions broaden our research footprint and solidify our position as one of the world's leading ornithology centers. The specimens and data collected this summer will support significant new research on issues threatening our natural world and will lay the foundation for discoveries we can't imagine today. These accomplishments are a direct result of the generous support of our Campaign for Ornithology. Our contributors have helped us to raise \$1 million, with all funds supporting active ornithological research.

343,313

accessions to the scientific collections

## YOUR SUPPORT Is the Key to Our Success

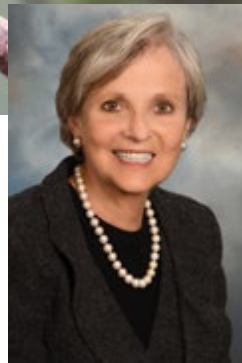
*For more information or to make a gift, please contact:*

Monica Cawvey Gallagher  
Vice President, Institutional Advancement  
215-299-1013  
gallagher@ansp.org

Meg Clifton North  
Director of Individual Giving  
and Stewardship  
215-299-3790  
north@ansp.org



# Two Extraordinary Leaders



*Cynthia P. Heckscher stepped down this spring after seven years as an Academy Trustee and five years of outstanding service as Chair of the Academy's Board.*

Heckscher was instrumental in the hiring of Academy President and CEO George Gephart. Together with Gephart, she guided the institution through its first years in affiliation with Drexel University, as well as a monumental Bicentennial celebration. She demonstrated exemplary leadership during our recent strategic planning process and greatly strengthened the Academy's Board and governance practices during her tenure.

Upon her retirement from the Board, Heckscher made a lead gift to establish The Maurice Heckscher Memorial Fund to help support the long-term growth and success of ornithology at the Academy. The fund will position us to become one of the world's leading ornithology centers in terms of our collection, research scope, and educational training programs.

This fund is established in memory of Maurice Heckscher (1907–2001), father of Cynthia Heckscher's husband, Martin Heckscher. Maurice Heckscher was a distinguished Philadelphia lawyer and a dedicated environmentalist and outdoorsman with a long-standing love for birds and bird-watching. The Academy looks forward to carrying out significant ornithological projects in Maurice Heckscher's name.

Thank you, Cindy, for helping our institution unite our historic mission and promising future.

*We would like to welcome our new Chair of the Board, Peter A. Austen.*

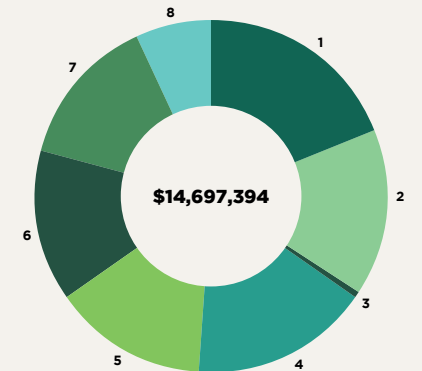


As a Trustee for six years and former Chair of the Marketing and Public Experience Committee, Austen has set the tone for many Academy museum initiatives. He has also been an invaluable member of the Development and Governance Committees. Peter, we are thrilled that you will be sharing your time and remarkable talents as you lead the Academy into the future.

## Financial Report for the Year Ended June 30, 2016

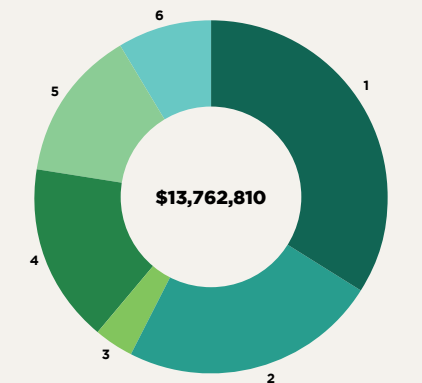
### Unrestricted Operating Revenue and Support

1. Research - Grants and Contracts	\$2,793,519
2. Public Programs, including Admissions	2,249,904
3. Other Programs and Grants	70,473
4. Net Assets Released from Restriction - All Programs	2,401,100
5. Contributions, Bequests, and Memberships	2,100,429
6. Endowment Income	2,042,734
7. Net Support from Drexel University	2,046,496
8. Other Income	992,739
<b>Total</b>	<b>\$14,697,394</b>



### Unrestricted Operating Expenses

1. Collections and Research	\$4,684,747
2. Public Programs	3,228,801
3. Library	512,230
4. Fundraising and Communications	2,254,034
5. Building and Technology Services	1,918,268
6. General and Administrative	1,164,730
<b>Total</b>	<b>\$13,762,810</b>



### Depreciation and Amortization

<b>Total</b>	<b>\$(1,109,490)</b>
--------------	----------------------

### Non-operating Activity, Net

<b>Total</b>	<b>\$(2,070,683)</b>
--------------	----------------------

### Net Assets

<b>Change in Net Assets</b>	<b>\$(2,245,589)</b>
Net Assets, Beginning of Year	\$81,022,442
Net Assets, End of Year	\$78,776,853

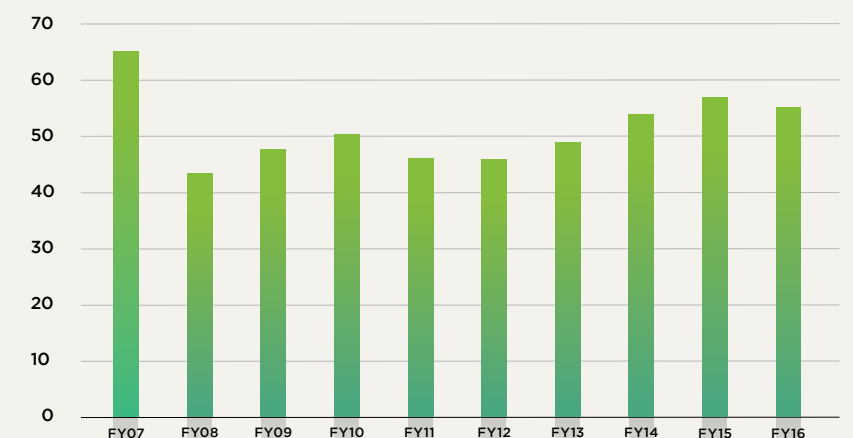
*The groundbreaking academic department Biodiversity, Earth & Environmental Science (BEES), formed upon the affiliation of the Academy and Drexel University, had an enrollment of 171 students in 2016. The department generated approximately \$4 million in tuition revenue net of financial aid.*

### Endowment Growth (in millions)

<b>2016</b>	Jun 30	\$55.032
<b>2015</b>	Jun 30	56.380
<b>2014</b>	Jun 30	53.612
<b>2013</b>	Jun 30	48.639
<b>2012*</b>	Jun 30	45.681
<b>2011</b>	Dec 31	45.794
<b>2010</b>	Dec 31	50.024
<b>2009</b>	Dec 31	47.439
<b>2008</b>	Dec 31	43.115
<b>2007</b>	Dec 31	64.743

\*Change in fiscal year from December 31 to June 30

### Year-End Endowment Market Value (MM)





# Thank You

On behalf of the Academy's Board of Trustees, we wish to recognize and thank those supporters who contributed to the Academy between July 1, 2015 and June 30, 2016.

Your generosity helps to fund the Academy's many research and education programs, and we are tremendously grateful for your support.

## \$200,000+

Anonymous (3)  
The Cotswold Foundation  
The Horace W. Goldsmith Foundation  
Leo Model Foundation, Inc.  
The McLean Contributionship  
Mr. Allen J. Model and Dr. Roberta E. Gausas  
Martha H. and I. Wistar Morris III\*  
William B. Dietrich Foundation  
William Penn Foundation

## \$100,000 to \$199,999

Anonymous (2)  
Mr. and Mrs. George W. Gephart Jr.  
Frank Gill and Sally Conyne  
Mrs. Diane Hill  
Kline & Specter, P.C.  
Marshall-Reynolds Foundation  
Mr. and Mrs. Gerald B. Rorer\*  
Teva Pharmaceuticals

## \$50,000 to \$99,999

Jane and John Bales\*  
Charles E. Ellis Grant and Scholarship Fund  
Cheryl Beth Silverman Memorial Fund  
Dana and Neil Cohen\*  
Mr. Rajiv L. Gupta

Cynthia and Martin Heckscher  
Mrs. Jane C. MacElree\*  
Pennsylvania Historical and Museum Commission  
Carol and Art Silverman\*  
Subaru of America Foundation  
Ujala Foundation  
Underwriters Laboratories, Inc.  
Minturn T. Wright III\*

## \$25,000 to \$49,999

Anonymous (2)  
Abington Friends School  
The Allerton Foundation  
Ms. Maude de Schauensee\*  
Abbie and Patrick Dean  
The Dow Chemical Company  
Dow Chemical Company Foundation  
Marilyn Fishman and James MacElderry\*  
Hamilton Family Foundation  
Ellen Harvey and Tad G. Sperry\*  
The Hess Foundation, Inc.  
Majik Foundation  
Mr. and Mrs. Warden D. McLean  
Ms. Alexandra Moede  
Mr. and Mrs. Seymour S. Preston III\*  
PSEG Power LLC  
Ann and Frank Reed  
RJM Foundation  
The Rorer Foundation, Inc.  
Connie and Sankey Williams

## \$10,000 to \$24,999

Anonymous  
Mary and Peter Austen  
Jeffrey A. Beachell  
Blue Sky Family Foundation  
Amy Branch and Jeff Benoliel\*  
Lois and Julian Brodsky\*  
The Brodsky Foundation  
Christian R. & Mary F. Lindback Foundation  
Cobbs Creek Healthcare  
The Connelly Foundation  
Patty and Rob Delany  
Dolfinger-McMahon Foundation  
Karen and Robert Drury  
FMC Corporation

GlaxoSmithKline  
Daniel Gordon and Sarah Barringer  
The Grace S. and W. Linton Nelson Foundation  
Jacqui and Dave Griffith  
Henkels & McCoy, Inc.  
Jun Huangpu and Xia Li  
Kathleen and Anthony Imbesi  
Mr. Scott Jordan  
Brooke and Tom Katzenbach  
Katzenbach Family Charitable Fund  
Mrs. Josephine S. Klein\*  
Mr. and Mrs. David P. Lazar Sr.\*  
Courtney and Page Leidy  
The Lenfest Foundation  
Lindsay Criswell LLC  
Linda and Tom McCarthy\*  
The McEwen Family Scholarship Fund  
Ms. Sandra Lee McLean\*  
MKM Foundation  
Elizabeth R. Moran\*  
Mr. and Mrs. Ranney Moran\*  
Mrs. Lucille Vanderbilt Pate  
Patriarch Family Foundation  
Mr. and Mrs. Robert M. Peck\*  
Pfizer, Inc.  
The PFM Group  
The Philadelphia Cultural Fund  
Philadelphia Insurance Companies  
Mr. and Mrs. Herbert T. Rorer  
Ivy Silver and Steven Leshner  
Judith Soltz and Richard Belas\*  
Mrs. Joly W. Stewart\*  
Sunoco Foundation  
Sunoco, Inc.  
Urban Outfitters  
Vandy Charitable Foundation  
Bob Victor and Alexandra Edsall  
Victor-Edsall Family Fund  
VWR Scientific  
Mrs. Jane Walker\*  
Nancy and Kenneth Warren  
Warren Environmental Counsel LLP  
Wawa, Inc.

\* Sustainers Society  
♦ Deceased

## THE SUSTAINERS SOCIETY

Loyal donors and members are the cornerstone of the Academy's success. The Sustainers Society was formed to honor donors to the Academy who have renewed their support for 10 or more consecutive years.

# 400

donuts consumed at Dinos and Donuts events for members and their families



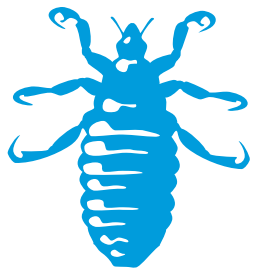
# 40

Members' Night activities hosted by scientists and staff



# \$10.4 MILLION

raised in fiscal year 2016 by the Academy team in support of Academy research and education



# 1,200

attendees to the annual 2015 Members' Night



# 45,000

visits by members using unlimited free general admission





**\$5,000 to \$9,999**

Anonymous (3)  
 2004 Carita Foundation, Inc.  
 Ms. Sarah S. Alfadd  
 Aqua America, Inc.  
 AstraZeneca  
 Joseph F. Baker and William Shaw Mulherin  
 Robert R. Buckley  
 Buckley & Company, Inc.  
 Mrs. Wendy C. Calhoun  
 Susan and Cummins Catherwood\*  
 The Charles Wentz Carter Memorial Foundation  
 The CHG Charitable Trust  
 The Christopher Ludwick Foundation  
 Coca-Cola  
 Amy and R. Putnam Coes III\*  
 Evie\* and Rod Day\*  
 Dortone Esser Foundation  
 Ralph C. Eagle Jr., M.D.\*  
 Ms. Elizabeth B. Farley  
 Pamela and David B. Ford\*  
 Foundation for Pennsylvania Watersheds  
 Ms. Elizabeth H. Gemmill\*  
 Carole Haas Gravagno and Emilio Gravagno\*  
 Hoxie Harrison Smith Foundation  
 Hufty Foundation  
 John & Dorothy Schmidt Family Foundation  
 Elizabeth and Robert Legnini  
 Louis N. Cassett Foundation  
 Merz Family Foundation  
 Edward A. Montgomery Jr.\*  
 Mr. and Mrs. John J. Nesbitt III  
 Jeanette Lerman-Neubauer and Joe Neubauer  
 Neubauer Family Foundation  
 PECO  
 Annette and Chuck Pennoni  
 Santander Bank  
 Mr. and Mrs. Hugh A. A. Sargent  
 Dr. John P. Schmidt\*  
 Mrs. Edward Starr III  
 Mrs. Mary D. Starr  
 Mr. and Mrs. James L. Van Alen  
 Veritable, LP  
 Suzanne and Robert Welsh  
 Mrs. Margaret H. Wolcott\*

**\$2,500 to \$4,999**

Dr. Beth Overley Adamson and Mr. Terry Adamson  
 Mr. and Mrs. John A. Affleck  
 Affleck Family Charitable Trust  
 Mr. Harris C. Aller Jr.\*  
 Mr. and Mrs. Pierce Archer\*  
 Sheila and Myron Bassman\*  
 Jean G. Bodine\*  
 Bryn Mawr Trust Company  
 Sheryl and Bill Bullitt\*  
 Mr. and Mrs. R. Kent Cadwalader  
 Mr. Charles W. Carlson Jr.  
 Dr. Erica Carpenter and Mr. Robert Carpenter  
 Chuck and Suzanne Cruit  
 Mr. and Mrs. Carl S. Cutler  
 Emily and Ted Daeschler

The Daeschler Family Fund  
 Delaware Valley Ornithological Club  
 Farber Family Foundation, Inc.  
 Marian and Harvey Forman\*  
 Mr. and Mrs. Walter L. Foulke  
 Vernon Francis and Camille Paglia  
 Joanne T. Greenspun\*  
 Jane and Paul Heintz\*  
 Jessie B. Hill  
 Mr. and Mrs. W. Anthony Hitschler  
 Kent-Lucas Foundation  
 Sally and Joe Layden  
 Bonnie and Peter McCausland  
 The McCausland Foundation  
 Elizabeth R. McLean\*  
 Katie and Bill McNabb\*  
 Mr. J. Frederick Merz Jr.\*  
 Barbara Oldenhoff\*  
 Laura Raab  
 Michael Reed and Yalta Gilmore-Reed\*  
 Sean Rhoads and Keri Fisher  
 Gretchen and Jay Riley\*  
 Mr. and Mrs. John Jeming Soroko\*  
 Sparkplug Innovations, LLC  
 Bayard T. Storey, PhD\*  
 Western Pest Services

**\$1,000 to \$2,499**

Anonymous (3)  
 Franny and Franny Abbott  
 AgileCat  
 Austelle Foundation  
 K. C. and Arthur Baldadian  
 Dr. Elizabeth Bales and Mr. Michael Dell'Angelo  
 Peter A. Benoliel and Willo Carey\*  
 Ann and Richard Biddle  
 Bluestone Foundation  
 DeDe and Tony Brown  
 Mr. and Mrs. W. Thacher Brown  
 Mr. and Mrs. William C. Buck\*  
 Jenny Rose and Gus Carey  
 Mr. and Mrs. Richard R. Carr  
 Anna and Todd Cassidy  
 Cheryl and Radcliffe Cheston  
 Mr. and Mrs. Tristram C. Colket Jr.\*  
 James Condon  
 CRW Graphics  
 Mrs. Nancy B. Davis\*  
 Maria and William DeFeo III  
 Gene and Charles Dilks\*  
 Mrs. Edward V. Dillon\*  
 The Honorable and Mrs. Calvin S. Drayer Jr.\*  
 Evelyn and Marc Duvivier  
 Mr. and Mrs. William B. Eagleson Jr.\*  
 Mr. and Mrs. V. Richard Eales  
 Jane Earle and Lawrence Jackson\*  
 Eleanor and Thomas Elkinton\*  
 Mrs. June P. Felley  
 Ms. Helen H. Ford\*  
 Dr. and Mrs. Robert\* C. Forney\*  
 Forney Family Foundation  
 Gilroy & Lillian Roberts Charitable Foundation

Scott Goldman and Maryalice Cheney  
 Dr. Janice T. Gordon\*  
 Mr. Jeffrey T. Harbison and Dr. Valerie A. Arkoosh\*  
 Mrs. Nancy G. Harris\*  
 Mr. and Mrs. Peter H. Havens  
 Gail and Peter Hearn\*  
 Nancy and Alan Hirsig\*  
 Mr. Dennis Hummel\*  
 Catherine Hunt and Family  
 The Jewish Community Foundation  
 Mr. and Mrs. John G. Johnson Jr.  
 The Joseph K. Skilling Trust  
 Kenneth Kulak and Katherine Hovde\*  
 Mr. Carter R. Leidy\*  
 Joanna McNeil Lewis  
 Mr. John R. H. Lightbourn  
 Sarah and Ted Lodge  
 Toshi and Bryan Long  
 Mr. and Mrs. Edward W. Madeira Jr.  
 Susan and Samuel Madeira  
 Main Line Health Systems  
 The Margaret Wolcott Fund  
 Amy and Christopher Marvin  
 Joan C. Mazzotti and Michael C. Kelly  
 Ms. Dagmar E. McGill\*  
 Karen and William Mestichelli  
 Metcalfe Architecture & Design  
 Lisa and Jeff Miller  
 Mr. David Milne and Ms. Varya Anderson\*  
 Mr. and Mrs. James O. Moore  
 Mr. and Mrs. Jeffrey Moore\*  
 Dr. and Mrs. Donald Morel  
 Kathy and Chip Morgan  
 Mr. and Mrs. Hugh G. Moulton\*  
 Natural Lands Trust Staff  
 Paul Nemeth and Jean Flood\*  
 Mr. and Mrs. John Arthur Nyheim\*  
 Mr. and Mrs. Edward W. O'Connor  
 Mr. Joseph A. O'Connor Jr.  
 Parkway Corporation  
 Mr. and Mrs. Lanny R. Patten\*  
 The Penn Mutual Life Insurance Company  
 The Pennsylvania Trust Company  
 Philadelphia Botanical Club  
 Philadelphia Shell Club  
 Drs. Neha and John Plastaras  
 Mr. and Mrs. George Putnam III\*  
 Kathy and Ned Putnam  
 Margaret and Tom Ralph\*  
 Dr. Ann F. Rhoads and Mr. Paul L. Rhoads\*  
 The Rittenhouse Foundation  
 Jennifer Merves Robbins and Brian Robbins  
 Bonnie and Elliot Rosenberg\*  
 The Honorable and Mrs. W. Hart Rufe III  
 John and Nancy Ryan  
 Michelle and Jim Sage  
 Samuel P. Mandell Foundation  
 SaylorGregg, A Studio of JacobsWyper Architects  
 Mr. and Mrs. Joseph B. Scheller\*  
 Dr. and Mrs. Alfred E. Schuyler\*

Jessica and Dave Sharp  
 Dr. Robert E. Silverman and Dr. Randi Leavitt\*  
 Sidney and Stewart Spahr\*  
 Sprague Foundation  
 Corinne and Roy Stahl  
 Carol Baker and Mark Stein  
 Patricia Tyson Stroud\*  
 Leon C. Sunstein Jr.\*  
 Jane and Scott Satterfield  
 Mr. and Mrs. L. Pierre Teillon Jr.  
 John A. Terrill and Mary Jane Barrett  
 Mrs. Susan Pepper Treadway  
 Mr. and Mrs. John C. Tuten Jr.  
 Signe Wilkinson and Jon Landau\*  
 Lev and Lynn Wood  
 Mr. and Mrs. Clarence Z. Wurts

**\$500 to \$999**

Drs. Gudrun and T. Peter Bennett\*  
 Denise and Jim Bilella  
 Helen Y. and Daniel K. Bowman  
 Lin and Jim Buck  
 The Buck Family Fund  
 Alice and Christian Bullitt  
 Laurada Byers\*  
 Capital Impact Partners  
 Maureen and Michael Caulfield  
 Emily and Matt Clifton  
 Mr. and Mrs. George G. H. Coates Jr.  
 Richard and Carol Collier\*  
 Mr. and Mrs. Ian Comisky  
 Catharine and Gary Cox  
 Barbara Edelstein  
 Eileen and Lee Mathias Charitable Fund  
 Caroline and Peter Ernst  
 Anne and David Ford  
 The Ford Family Foundation  
 Kevin Fretz  
 Drs. Pamela and Peter Freyd\*  
 William J. Frezel\*  
 Katy and Jason Friedland  
 Dr. and Mrs. Jon K. Gelhaus  
 Tina and Paul Gordon  
 Tamar and Marshal Granor\*  
 Drs. Vivian and Mark Greenberg  
 Hannah Griswold  
 Mr. and Mrs. George Hardie  
 Alice and Peter Hausmann  
 Sara Hertz and Lee Meinicke  
 Dr. Lesley A. Hughes and Dr. Douglas Hughes  
 Mr. Pemberton Hutchinson\*  
 Mr. and Mrs. Lee M. Hymerling\*  
 Mr. and Mrs. Craig N. Johnson\*  
 Jose Pistola's  
 Barbara and Charles Kahn Jr.\*  
 Robert L. Kaplan  
 Jeanne and Jeff Lasota  
 Susan Lea  
 Dr. and Mrs. Harry G. Lee  
 Dr. Egbert G. Leigh Jr.  
 Dr. Thomas E. Lovejoy\*  
 Mr. and Mrs. William G. Lyons

Jennifer E. Maguire  
 John Makara and Kathy Patterson  
 Eileen and Lee Mathias\*  
 Mr. Steven G. Maurer\*  
 Leanne Merz McMenamin  
 Mr. and Mrs. Chi Mo\*  
 Daniel Moerman and Claudine Farrand  
 Timothy Nugent and Rebecca Calder-Nugent  
 Joseph O'Hare and Wallace Beard\*  
 Elizabeth and Philip Y. Pearson  
 Dr. Lucian B. Platt\*  
 Marlene and Joseph Ramsay\*  
 Dr. Robert and Mrs. Harriet H. Robertson\*  
 Julie Stone and Michael Rueter\*  
 Ms. Bonnie Schorske  
 Kathleen and Frank Seidman\*  
 Julieann and Keven Shanahan  
 Drs. Karen and Robert Sharrar  
 Wilbert Shin and Britt Benner Shin  
 Karen and Stuart Skinner  
 Stephen Smith and Ellen Kurtz\*  
 Christine and James Suit  
 Supportive Behavioral Resources, Inc.  
 Cynthia and Charlie Szoradi  
 Dr. and Mrs. F. Todd Wetzel  
 Catherine A. Worrall  
 Mitchell Young and Anna Forrester  
 Josephine F. Zelov

**\$250 to \$499**

Anonymous (3)  
 Carol and William Barr  
 Jeremy Basch  
 Bob and Priscilla Bauer  
 Ms. Jane N. Beatty\*  
 Monica Benson and Keith Drake  
 Kathleen and John Berkowitz  
 Mr. and Mrs. Bernard E. Berlinger Jr.  
 Mr. Andrew Blittman and Ms. Linda Zaleski  
 Susan and Mark Brousseau  
 James Brozina and Kristen Angellucci  
 Mr. and Mrs. William R. Brydges  
 Laura T. Bullitt  
 Otis Bullock and Donna Bullock  
 Ms. Annie Burridge  
 Maldalena and Deirdre Camacho  
 Mr. Lee A. Casper\*  
 Christopher B. Chandor  
 Gordon Chaplin and Sarah Teale\*  
 Joan and Joel Chinitz\*  
 Gordon Clark and Veronica Tsang  
 Mark and Laretta Clay  
 Christopher Cobb  
 Dr. Lauren Sallan and Mrs. Barbara Cole  
 Lorraine and Robert Coleman  
 Rebecca and Luis Cornejo  
 Robert Czarneski and Tara Kszepka  
 Susan Dando and Alexandre Costabile  
 Dr. Marina D'Angelo and Mr. Peter Santa Maria  
 Dr. and Mrs. James L. Dannenberg\*  
 Rhoda and Michael Danziger  
 Randall C. Deike

Christine and Drew Devitt  
 Mr. Vikram H. Dewan  
 Sophie B. Donaghy\*  
 Tracy and Sean Dowling  
 Mr. and Mrs. Robert V. Duprey  
 Mr. Jeffrey E. Edelman\*  
 Drs. Howard J. Eisen and Judith E. Wolf  
 Talia Eisenstein and Howard Berkowitz  
 Frances and Bob Ellis  
 Ms. Linda V. Ellsworth\*  
 Mr. J. Morris Evans\*  
 Rusty Faircloth  
 Susan and John Farber  
 Dr. Jay L. Federman and Ms. Sylvia R. Beck\*  
 Lindsay Fiesthumel and Tristan Michaleski  
 Tranda S. Fischelis  
 Mr. and Mrs. Frank B. Foster III  
 Mr. and Mrs. Frank W. Foster  
 Laura Foster and Aaron Goldblatt  
 Mr. and Mrs. Mark W. Foster  
 Dr. and Mrs. Kenneth Frank\*  
 Mr. and Mrs. Ivan H. Gabel  
 Mr. and Mrs. W. Roderick Gagne\*  
 John Garrity\*  
 Mr. Gregory Garvin  
 Drs. Brenda\* and Laurence Gavin  
 Mr. and Mrs. Mitchell Gerstein  
 Joan Gervato  
 Gale and Bruce Gillespie  
 GIV Mobile  
 Lisa and Joel Givner\*  
 Dr. Marla Gold and Ms. Debra Brady  
 Dr. and Mrs. Frederick S. Golec Jr., Ph.D., RAC  
 Dr. Gregg E. Gorton\*  
 Mr. and Mrs. Gregory G. Gosfield  
 Mr. and Mrs. Clyde E. Goulden  
 Mr. and Mrs. William Green  
 Mr. and Mrs. Thomas S. Greenwood Jr.  
 Tucker C. Gresh  
 Harry C. Groome III  
 Mr. Joseph Gruber  
 Helene and Carl Gumerman  
 Aimee and Joseph Gunoskey\*  
 Anne and Reginald Harris  
 Mr. and Mrs. Herbert Henze  
 Herbert and Rosalie Goldberg  
 Family Foundation, Inc.  
 Lois V. Hill\*  
 Tiffany and Christian Hoyt  
 Mr. and Mrs. J. D. Hucker  
 Ms. Alice W. Irwin  
 Mr. and Mrs. Michael Jones\*  
 Mr. and Mrs. Alexander Kerr  
 Mr. and Mrs. David Deforest Keys  
 Dr. and Mrs. Richard C. Kovach  
 Karin Kuentler  
 Robert Lawler and Thomas Lawler

\* *Sustainers Society*  
 ♦ *Deceased*

\* *Sustainers Society*  
 ♦ *Deceased*





Noreen and Gregory Lefever  
 Dr. Curtis Lehman and Mrs. Suzanne Lehman  
 John Lehman and Christine Carlson  
 Elie-Anne and Rudy Lewis  
 Mr. William A. Loeb\*  
 Trinity and Alex Lubneuski  
 Mark and Hope Foster Charitable Giving Fund  
 Elsie and Sandy McAdoo  
 Maura McCarthy and Joseph Barber  
 Elizabeth McManus and Carlos Montoya  
 Kathryn Mellingner  
 Alison and Dale Miller  
 Mrs. Gainor I. Miller\*  
 Ms. Sarah Millet  
 Tara Mohr and Michael Goldfine  
 Lyn and David Montgomery  
 Dr. Heather Murphy and Mr. John Murphy  
 Linda and Jeffrey Needleman  
 Dr. Evan Neft and Mrs. Kathryn Neft  
 Paul Nestor and Kathy Jones-Nestor\*  
 Mary Kay Nicolo\*  
 Christina and Efrain Ortiz  
 Mr. Robert C. Pettit  
 The Philadelphia School  
 Hon. Gene E. K. Pratter and Robert L. Pratter, Esq.  
 Ms. Tricia Pucci  
 Mr. and Mrs. Douglas H. Pyle  
 Olivia and Tim Rabe  
 Daniel Rader and Carolyn Cannuscio  
 Nicole and Mohammed Rahman  
 Colleen Rieser and Jillian Ward  
 Andrea Rowe and Benjamin Stahl  
 Dr. Keiran Rump and Mr. John Orefice  
 Ms. Tracy Russo  
 Clinton Rutherford and Eva Sum  
 Dr. and Mrs. Louis E. Sage  
 Drs. Sue and Steve Salva  
 Mr. and Mrs. Joel Sand  
 Mr. Steven E. Saunders\*  
 Doris S. Schoener\*  
 Mr. and Mrs. Peter H. Sellers\*  
 Dr. and Mrs. Paul Shaman\*  
 Mrs. Matthew Slap\*  
 Nicole and Curtis Snyder  
 Mr. Charles T. Spackman  
 Mr. and Mrs. John Spear  
 David Stewart  
 Jamie Stewart  
 Ms. Louise A. Strauss  
 Heather Hahn Sullivan and Lon Sullivan  
 Ashley and Ross Summer  
 Anna and Menno Tas  
 Mr. and Mrs. John H. Thacher Jr.  
 Kirk J. Thieroff  
 Mr. and Mrs. Robert H. Thorpe

Marilyn Torres and Leopold Jusino  
 Margaret VanDiehl and Michelle VanDiehl  
 Karen and Alexander Vegega  
 Margaret and Bob Wallis\*  
 Warwick Wheeler and Mollie McNickle-Wheeler\*  
 Staci and Anthony Wiemelt  
 Mr. and Mrs. David R. Wilmerding Jr.\*  
 Mrs. Penelope Wilson\*  
 Mr. and Mrs. John B. Winkler\*  
 Lea Wood Winter and Family  
 Loretta and Tom Witt\*  
 Constance H. Wood  
 Jonathan Woodstock and Ami Lynch  
 Judith and Chris Yoppi  
 Cathy and Frank Young  
 Robert Yrigoyen  
 Mr. and Mrs. Joseph Zygmunt

#### Honorary Gifts

Anonymous, *in honor of the library*  
 Helen Y. and Daniel K. Bowman, *in honor of Brayden and Gaven Bowman*  
 DeDe and Tony Brown, *in honor of George W. Gephart Jr. and Robert M. Peck*  
 Gary M. Charlestein, *in honor of William Frezel*  
 Alice Dagit, *in honor of Jane Heintz*  
 Dr. Douglass Dalton, *in honor of Mr. Joseph Baker*  
 Mrs. Janice Diamond-Wolf, *in honor of Bill Mulherin and Joe Baker*  
 Lucinda Duncafe and Russell Holt, *in honor of Emma Holt*  
 Mr. and Mrs. Walter L. Foulke, *in honor of George W. Gephart Jr., Robert M. Peck, and Cynthia Heckscher*  
 Catherine Frankenbach and Harvey Stenger, *in honor of George and Pooh Gephart*  
 Barbara and Bernie Freidrich, *in honor of John Santamaria*  
 Ellen Harvey and Tad G. Sperry\*, *in honor of Cindy and Pierce Archer*  
 Sara Hertz and Lee Meinicke, *in honor of the generosity of Aaron Goldblatt and Laura Foster*  
 Jessie B. Hill, *in honor of Jane C. MacElree*  
 Lisa and Dan Kurtz, *in honor of Evan and Harrison Black*  
 Dr. and Mrs. Harry G. Lee, *in honor of Dr. Robert Robertson*  
 Sally and Michael Newbold, *in honor of Clement B. Newbold*  
 The Pennsylvania Trust Company, *in honor of I. Wistar Morris III*  
 Mrs. Peter Randall, *in honor of Robert M. Peck*  
 Mr. Douglas S. Reigeluth, *in honor of George W. Gephart Jr.*  
 Andrea Rowe and Benjamin Stahl, *in honor of Sabah Dorgan*  
 Dr. and Mrs. Alfred E. Schuyler\*, *in honor of Ted Gordon*  
 Deepa Shankar, *in honor of the WINS Costa Rica trip fund*  
 Mr. and Mrs. Bruce E. Silverman\*, *in honor of Art Silverman for Father's Day*  
 Margaretta Wilson, *in honor of Mr. and Mrs. Gerald B. Rorer*  
 Etta Winograd, *in honor of the 80th birthday of volunteer Elaine Ellison*

\* Sustainers Society  
 ♦ Deceased





#### Memorial Gifts

Gordon Chaplin and Sarah Teale\*,  
in memory of Charles C. G. Chaplin  
Allen Cohen,  
in memory of Hinda and Judith Cohen  
Katherine Criscuolo,  
in memory of David Wright  
Frances and Bob Ellis,  
in memory of Albert Visco  
Mary Fallon and Daniel Kurdilla,  
in memory of Edward J. Burns  
Gregg E. Gorton,  
in memory of Steve Kacir  
Tucker C. Gresh,  
in memory of Perry C. Gresh  
Ms. Sandra Lee McLean\*,  
in memory of William L. McLean III

#### In memory of Cheryl Beth Silverman

Benjamin and Libby Blank  
Carol and Art Silverman\*

#### In memory of R. James Macaleer

Mr. and Mrs. V. Richard Eales  
Amy and Christopher Marvin  
Natural Lands Trust Staff

#### Leadership Circles

Leadership gifts play a critical role in sustaining the Academy's scientific research programs, which explore today's most significant questions in environmental science, biodiversity, and evolution. To learn more about giving at the Leadership Circles level, please contact our Office of Institutional Advancement at 215-299-1122 or leadershipcircles@ansp.org.

#### Jefferson Circle

Anonymous  
Marilyn Fishman and James MacElderry\*  
Mr. and Mrs. George W. Gephart Jr.  
Dr. Janet F. Haas and Mr. John O. Haas\*  
Mrs. Jane C. MacElree\*  
Mr. Allen J. Model and Dr. Roberta E. Gausas  
Martha H. and I. Wistar Morris III\*  
Mr. and Mrs. Seymour S. Preston III\*  
Mr. and Mrs. Gerald B. Rorer\*  
Connie and Sankey Williams

#### Darwin Circle

Mary and Peter Austen  
Amy Branch and Jeff Benoliel\*  
Lois and Julian Brodsky\*  
Abbie and Patrick Dean  
Karen and Robert Drury  
Jacqui and Dave Griffith  
Ellen Harvey and Tad G. Sperry\*  
Cynthia and Martin Heckscher  
Jun Huangpu and Xia Li  
Kathleen and Anthony Imbesi  
Mr. Scott Jordan  
Mrs. Josephine S. Klein\*  
Mr. and Mrs. David P. Lazar Sr.\*  
Courtney and Page Leidy  
Elizabeth R. Moran\*  
Mr. and Mrs. Ranney Moran\*  
Mrs. Lucille Vanderbilt Pate  
Mr. and Mrs. Robert M. Peck\*  
Ann and Frank Reed  
Mr. and Mrs. Herbert T. Rorer  
Ivy Silver and Steven Leshner  
Judith Soltz and Richard Belas\*  
Bob Victor and Alexandra Edsall  
Mrs. Jane Walker\*  
Nancy and Kenneth Warren

#### Leidy Circle

Anonymous (2)  
Jeffrey A. Beachell  
Mrs. Wendy C. Calhoun  
Susan and Cummins Catherwood\*  
Amy and R. Putnam Coes III\*  
Evie\* and Rod Day\*  
Patty and Rob Delany  
Ralph C. Eagle Jr., M.D.\*  
Stephen Esser and Dana Dortone\*  
Pamela and David B. Ford\*  
Ms. Elizabeth H. Gemmill\*  
Carole Haas Gravagno and Emilio Gravagno\*  
Elizabeth and Robert Legnini  
Edward A. Montgomery Jr.\*  
Mr. and Mrs. John J. Nesbitt III  
Jeanette Lerman-Neubauer and Joe Neubauer  
Annette and Chuck Pennoni  
Dr. John P. Schmidt\*  
Mr. and Mrs. John Jeming Soroko\*  
Mrs. Edward Starr III  
Suzanne and Robert Welsh  
Mrs. Margaret H. Wolcott\*

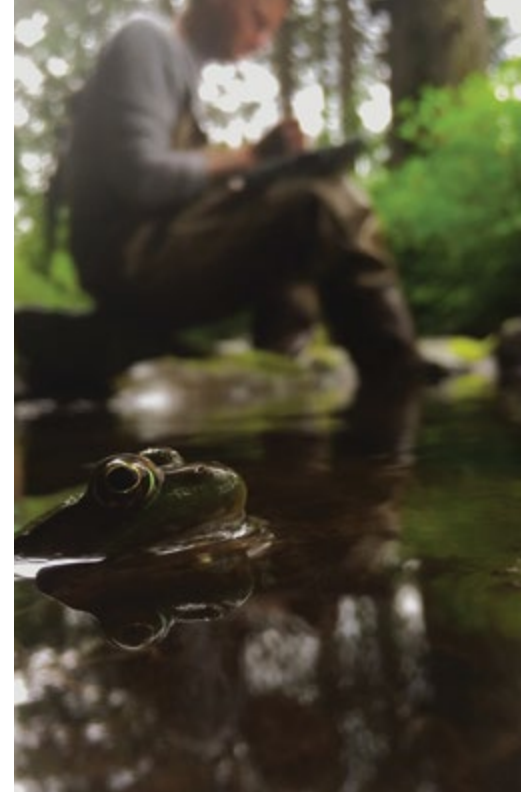
#### Lewis and Clark Circle

Mr. and Mrs. John A. Affleck  
Ms. Sarah S. Alfadl  
Mr. Harris C. Aller Jr.\*  
Sheila and Myron Bassman\*  
Jean G. Bodine\*  
Sheryl and Bill Bullitt\*  
Mr. and Mrs. R. Kent Cadwalader  
Dr. Erica Carpenter and Mr. Robert Carpenter  
Mr. and Mrs. Carl S. Cutler  
Emily and Ted Daeschler  
Marian and Harvey Forman\*  
Mr. and Mrs. Walter L. Foulke  
Vernon Francis and Camille Paglia  
Joanne T. Greenspun\*  
Jane and Paul Heintz\*  
Jessie B. Hill  
Mr. and Mrs. W. Anthony Hitschler  
Janet and Lewis Klein\*  
Sally and Joe Layden  
Linda and Tom McCarthy\*  
Bonnie and Peter McCausland  
Ms. Sandra Lee McLean\*  
Katie and Bill McNabb\*  
Mr. J. Frederick Merz Jr.\*  
Barbara Oldenhoff\*  
Laura Raab  
Michael Reed and Yalta Gilmore-Reed\*  
Sean Rhoads and Keri Fisher  
Gretchen and Jay Riley\*  
Bayard T. Storey, PhD\*  
Minturn T. Wright III\*

#### President's Circle

Anonymous  
Franny and Franny Abbott  
Mr. and Mrs. Pierce Archer\*  
Joseph F. Baker and William Shaw Mulherin  
K. C. and Arthur Baldadian  
Jane and John Bales\*  
Drs. Gudrun and T. Peter Bennett\*  
Peter A. Benoliel and Willo Carey\*  
Ann and Richard Biddle  
DeDe and Tony Brown  
Mr. and Mrs. W. Thacher Brown  
Mr. and Mrs. William C. Buck\*  
Jenny Rose and Gus Carey  
Mr. and Mrs. Richard R. Carr  
Cheryl and Radcliffe Cheston  
Mr. and Mrs. Tristram C. Colket Jr.\*  
James Condon  
Mrs. Nancy B. Davis\*  
Maria and William DeFeo III  
Gene and Charles Dilks\*  
Mrs. Edward V. Dillon\*  
The Honorable and Mrs. Calvin S. Drayer Jr.\*  
Evelyn and Marc Duvivier  
Mr. and Mrs. William B. Eagleson Jr.\*  
Mr. and Mrs. V. Richard Eales  
Jane Earle and Lawrence Jackson\*  
Eleanor and Thomas Elkinton\*

\* Sustainers Society  
♦ Deceased



11,320

specimens or lots loaned to researchers  
around the world



150,000+

square feet of collections  
behind the scenes at the Academy

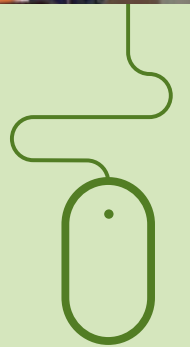
65+

terabytes of digital images of Academy collections



703,202

total sessions on ans.org



360

Academy volunteers  
in the museum and  
behind the scenes

49,404

Facebook followers







Mrs. June P. Felley  
 Ms. Helen H. Ford\*  
 Dr. and Mrs. Robert\* C. Forney\*  
 Scott Goldman and Maryalice Cheney  
 Dr. Janice T. Gordon\*  
 Mr. Jeffrey T. Harbison and  
 Dr. Valerie A. Arkoosh\*  
 Mrs. Nancy G. Harris\*  
 Mr. and Mrs. Peter H. Havens  
 Gail and Peter Hearn\*  
 Nancy and Alan Hirsig\*  
 Mr. Dennis Hummel\*  
 Catherine Hunt and Family  
 Mr. and Mrs. John G. Johnson Jr.  
 Mr. and Mrs. Craig N. Johnson\*  
 Kenneth Kulak and Katherine Hovde\*  
 Mr. and Mrs. Peter Lapham  
 Mr. Carter R. Leidy\*  
 Joanna McNeil Lewis  
 Mr. John R. H. Lightbourn  
 Sarah and Ted Lodge  
 Toshi and Bryan Long  
 Susan and Samuel Madeira  
 Mr. and Mrs. Edward W. Madeira Jr.  
 Amy and Christopher Marvin  
 Joan C. Mazzotti and Michael C. Kelly  
 Mrs. Elizabeth P. McLean\*  
 Karen and William Mestichelli  
 Lisa and Jeff Miller  
 Mr. David Milne and Ms. Varya Anderson\*  
 Mr. and Mrs. Jeffrey Moore  
 Mr. and Mrs. James O. Moore\*  
 Dr. and Mrs. Donald Morel  
 Kathy and Chip Morgan  
 Mr. and Mrs. Hugh G. Moulton\*  
 Paul Nemeth and Jean Flood\*  
 Mr. and Mrs. John Arthur Nyheim\*  
 Mr. and Mrs. Edward W. O'Connor  
 Mr. Joseph A. O'Connor Jr.

Mr. and Mrs. Lanny R. Patten\*  
 Mr. and Mrs. George Putnam III\*  
 Kathy and Ned Putnam  
 Margaret and Tom Ralph\*  
 Dr. Ann F. Rhoads and Mr. Paul L. Rhoads\*  
 Jennifer Merves Robbins and Brian Robbins  
 Dr. Robert and Mrs. Harriet H. Robertson\*  
 Bonnie and Elliott Rosenberg\*  
 The Honorable and Mrs. W. Hart Rufe III  
 Mr. and Mrs. Joseph B. Scheller\*  
 Dr. Robert E. Silverman and Dr. Randi Leavitt\*  
 Carol and Art Silverman\*  
 Sidney and Stewart Spahr\*  
 Corinne and Roy Stahl  
 Carol Baker and Mark Stein  
 Patricia Tyson Stroud\*  
 Leon C. Sunstein Jr.\*  
 Jane and Scott Satterfield  
 Mr. and Mrs. L. Pierre Teillon Jr.  
 John A. Terrill and Mary Jane Barrett  
 Mr. and Mrs. John C. Tuten Jr.  
 Signe Wilkinson and Jon Landau\*  
 Mr. and Mrs. Clarence Z. Wurts

### 1812 Society Members

*For many years, the Academy's most dedicated supporters have invested in our future by including the Academy in their estate plans. The Academy's Board of Trustees established the 1812 Society in honor of our most forward-thinking supporters whose contributions have sustained the Academy's growth for the past two centuries. To learn more or to receive a free copy of our guide to gift planning, Leaving a Legacy, please contact the Office of Institutional Advancement, at 215-299-1182, email [plannedgiving@ansp.org](mailto:plannedgiving@ansp.org), or visit [ansp.org/plannedgiving](http://ansp.org/plannedgiving). Thank you for your support!*

Anonymous (2)  
 Joseph F. Baker  
 Vivian K. Blank\*  
 Jean G. Bodine\*

Joan and Joel Chinitz\*  
 Donald Cleaver\*  
 Luther A. Clement\*  
 Walter R. Coley\*  
 Amy and George Dick  
 Elizabeth G.\* and Thomas Dolan IV\*  
 Jane Earle and Lawrence Jackson\*  
 Frances and Bob Ellis  
 Drs. Barbara and Len Frank\*  
 Julia W. Frick\*  
 Frank Gill and Sally Conye  
 Mrs. S. Page Hartley  
 Cynthia and Martin Heckscher  
 Lois V. Hill\*  
 Jean and R. James\* Macaleer  
 Edward A. Markart Jr.  
 Jacqueline Markart  
 Mrs. Elizabeth P. McLean  
 Mr. Robert M. Peck\*  
 Mrs. Elizabeth P. Petit  
 Mr. and Mrs. Seymour S. Preston III\*  
 Mr. Francis Rasmus\*  
 Ann and Frank Reed  
 Sean Rhoads and Keri Fisher  
 Dr. Robert and Mrs. Harriet H. Robertson\*  
 Phyllis and Gary Rosenberg  
 Mr. and Mrs. Nicholas Ruggeri  
 Dr. John P. Schmidt\*  
 Pamela and Philippe Serra\*  
 Carol and Art Silverman\*  
 Patricia Tyson Stroud\*  
 Minturn T. Wright III\*

### Estate Gifts

Vivian K. Blank  
 Donald Cleaver  
 Marie A. Richards

### Named Endowment Funds

*Endowment funds provide a source of sustainable support for a variety of Academy initiatives, from postdoctoral research to our annual lecture series. If you are interested in making a gift to a named endowment or establishing one in your name, please contact the Office of Institutional Advancement at 215-299-1182 or email [friends@ansp.org](mailto:friends@ansp.org).*

Albert E. Gilbert Endowment  
 The Albert M. Greenfield Technology Upgrade Endowment  
 Anonymous Discretionary Fund  
 Bohlke Memorial Fund  
 Botany Curator Endowment  
 Botany General Endowment  
 Brooke Dolan Archivist Endowment  
 Carol Spawn Endowment Fund  
 Chair of Environmental Initiatives Endowment  
 Chaplin Chair of Ichthyology  
 Dr. Charles Hodge IV Memorial Fund

\* Sustainers Society  
 ♦ Deceased

Charlotte C. Stokes Art Collection Endowment  
 Cheryl Beth Silverman Memorial Fund  
 Clark Operating Endowment  
 CSBE Endowment  
 de Schauensee Endowment Fund  
 The Don and Virginia Eckleberry Endowment for Wildlife Art  
 Education Endowment  
 Elizabeth and James Abraham Garfield Rehn Endowment Fund  
 Entomology Endowment  
 ERC Endowment  
 Fellow of the Academy Chair  
 Florence R. Foerderer Endowment Fund  
 Frank and Ruth Patrick Endowment Fund  
 Grace Tees Herbarium Maintenance Fund  
 H. Radcliffe Roberts Fund  
 Hattersley Family Foundation Collection Care Upgrade Fund  
 Hayden Memorial Geological Fund  
 Hazel and Radcliffe Roberts Fund  
 Henry A. Pilsbry Chair of Malacology  
 Horace and Marie Richards Fund  
 Jessup-McHenry Fund  
 Joe Cadbury Scholarships Fund  
 John and Jane Bales Endowed Fund  
 John and Marjorie Foster Fund for Ornithology  
 John J. and Anna H. Gallagher Fellowship  
 Joseph Leidy Memorial Fund  
 Leidy Sculpture Preservation Fund  
 Library Endowment  
 Library Technology Fund  
 Maurice Heckscher Endowed Fund for Ornithology  
 McLean Acquisition Fund  
 McLean Annual Fund Endowment  
 Mildred Eckert Book Fund  
 Morgan Hebard Fund  
 Nolan Binding Fund  
 Ornithology Endowment  
 Richard Hopper Day Memorial Fund  
 Robert and Happy Robertson Fund  
 Ruth Patrick Chair in Environmental Science  
 Schuyler Herbarium Internship Endowment Fund  
 The Sherry E. Weiss Fund for *Outside In*  
 Strategic Initiatives Endowment  
 T. Charleton Henry Memorial  
 Theodore J. Cohn Endowment  
 The William L. McLean III Endowed Fellowship Fund  
 Vertebrate Paleontology Special Fund  
 Vertebrate Zoology Fund  
 VIREO Endowment  
 Young People's Explorer Series

### Cuisine from the Collections

*We would especially like to thank our patrons, benefactors, table sponsors, and in-kind donors for ensuring the success of this event featuring food and drink inspired by the 18 million specimens in the Academy's scientific collection. For more information about upcoming events, please contact the Office of Institutional Advancement at 215-299-1115 or email [land@ansp.org](mailto:land@ansp.org).*

12th Street Catering  
 Dr. Beth Overley Adamson and  
 Mr. Terry Adamson  
 AgileCat  
 Aqua America, Inc.  
 Mr. and Mrs. Pierce Archer\*  
 Mary and Peter Austen  
 Joseph F. Baker and William Shaw Mulherin  
 Jane and John Bales\*  
 Dr. Elizabeth Bales and Mr. Michael Dell'Angelo  
 Bob and Priscilla Bauer  
 Jeffrey A. Beachell  
 Alice and Christian Bullitt  
 Ms. Annie Burridge  
 Dr. and Mrs. Frederic Bushman  
 Laurada Byers\*  
 Mr. Charles W. Carlson Jr.  
 Anna and Todd Cassidy  
 Chlöe BYOB  
 Stephanie and Michael Chomentowski  
 City Tap House  
 Emily and Matt Clifton  
 Meg Clifton and Victor North  
 Mr. and Mrs. George G. H. Coates Jr.  
 Cobbs Creek Healthcare  
 Mr. and Mrs. Ian Comisky  
 James Condon  
 Rebecca and Luis Cornejo  
 Ms. Maude de Schauensee\*  
 Randall C. Deike  
 Mr. Vikram H. Dewan  
 DiBruno Brothers  
 Tracy and Sean Dowling  
 Mr. and Mrs. Robert V. Duprey  
 Whitney and Christopher Ebmeyer  
 Caroline and Peter Ernst  
 Tranda S. Fischelis  
 Anne and David Ford  
 The Ford Family Foundation  
 Katy and Jason Friedland  
 Drs. Brenda\* and Laurence Gavin  
 Mr. and Mrs. George W. Gephart Jr.  
 Gale and Bruce Gillespie  
 Dr. Marla Gold and Ms. Debra Brady  
 Dr. Janice T. Gordon\*  
 Tina and Paul Gordon  
 Mr. and Mrs. William Green  
 Drs. Vivian and Mark Greenberg  
 Mr. and Mrs. Thomas S. Greenwood Jr.  
 Jacqui and Dave Griffith  
 Hannah Griswold  
 Ellen Harvey and Tad G. Sperry\*  
 Cynthia and Martin Heckscher  
 Carla Heiken  
 Jane and Paul Heintz\*  
 Herbert and Rosalie Goldberg  
 Family Foundation, Inc.  
 Tiffany and Christian Hoyt  
 Jun Huangpu and Xia Li  
 Catherine Hunt and Family  
 Independence Seaport Museum  
 Mr. and Mrs. Raymond E. Ix Jr.  
 Bettie Kehrt and Randall Kehrt\*

Mr. and Mrs. David Deforest Keys  
 Ms. Karin Kuenstler  
 Mr. and Mrs. David C. Larned Jr.  
 Jeanne and Jeff Lasota  
 Sally and Joe Layden  
 Susan Lea  
 Mr. Carter R. Leidy\*  
 Elie-Anne and Rudy Lewis  
 Sarah and Ted Lodge  
 Michelle Lordi and Mac Osterneck  
 Jennifer E. Maguire  
 Main Line Health Systems  
 Amy and Christopher Marvin  
 Mr. Steven G. Maurer\*  
 Joan C. Mazzotti and Michael C. Kelly  
 Linda and Tom McCarthy\*  
 Ms. Susannah McLean  
 Elizabeth McManus and Carlos Montoya  
 Leanne and Rob McMenamin  
 Lisa and Jeff Miller  
 Ms. Sarah Millet  
 Mr. David Milne and Ms. Varya Anderson\*  
 Mr. Allen J. Model and Dr. Roberta E. Gausas  
 Edward A. Montgomery Jr.\*  
 Kathy and Chip Morgan  
 Barbara Oldenhoff\*  
 Mr. Jose Pascual  
 Mr. and Mrs. Robert M. Peck\*  
 Mrs. Neha and John Plastaras  
 Mr. Jason Poole  
 Ms. Tricia Pucci  
 Mr. and Mrs. Douglas H. Pyle  
 Laura Raab  
 Donald and Mirella Raible  
 Ann and Frank Reed  
 Michael Reed and Yalta Gilmore-Reed\*  
 Sean Rhoads and Keri Fisher  
 Mr. and Mrs. Gerald B. Rorer\*  
 Andrea Rowe and Benjamin Stahl  
 Clinton Rutherford and Eva Sum  
 John and Nancy Ryan  
 Michelle and Jim Sage  
 Drs. Sue and Steve Salva  
 Julieann and Keven Shanahan  
 Jessica and Dave Sharp  
 Ivy Silver and Steven Leshner  
 Judith Soltz and Richard Belas\*  
 Mr. and Mrs. John Jeming Soroko\*  
 David Stewart  
 James Suit and Christine Suit  
 Cynthia and Charlie Szoradi  
 Mr. and Mrs. L. Pierre Teillon Jr.  
 Mr. and Mrs. John H. Thacher Jr.  
 Tin Goat  
 Mr. and Mrs. Brian M. Tippin  
 Mrs. Susan Pepper Treadway

\* Sustainers Society  
 ♦ Deceased



Mr. and Mrs. Charles R. Tyson III  
Bob Victor and Alexandra Edsall  
Nancy and Kenneth Warren  
Minturn T. Wright III\*  
Robert Yrigoyen

#### Matching Gift Organizations

BNY Mellon Wealth Management  
GE Foundation  
GlaxoSmithKline Foundation  
Johnson & Johnson Matching Gifts Program  
Merck Partnership for Giving  
The Philadelphia Contributionship Insurance Company  
UBS

#### Government and Research Grants

American Alliance of Museums  
Barnegat Bay Partnership  
City of Milwaukee  
Columbia County Board of Commissioners  
Commonwealth of Pennsylvania  
Commonwealth of Virginia  
DuPont  
Eastman Chemical Company  
Elkorn Slough Foundation  
General Electric  
Great Bay National Estuarine Research  
Great Lakes Environmental Center, Inc.  
Louisiana State University  
Lower Salford Township  
Montana DEQ  
National Ecological Observatory Network (NEON)  
National Institute of Health  
National Oceanic and Atmospheric Administration  
National Park Service  
National Science Foundation  
New Jersey Department of Environmental Protection  
New Jersey Sea Grant (NOAA)  
Northern Arizona State University  
Oregon Health & Science University  
Partnership for the Delaware Estuary  
Patricia and Phillip Frost Museum of Science  
Pennsylvania Coastal Zone  
Pennsylvania Historical and Museum Commission  
Pennsylvania Sea Grant (NOAA)  
The Philadelphia Cultural Fund  
Philadelphia Water Department  
Phinizy Center for Water Sciences  
State of California  
State of Connecticut  
State of Idaho  
State of Maine  
State of Missouri  
Stroud Water Research Center  
United States Department of State, Bureau of Education  
United States Environmental Protection Agency  
United States Fish and Wildlife Service  
United States Geological Survey  
University of Pennsylvania  
Versar, Inc.

#### Gifts to the Library and Collections

Liz and Harry Armistead  
Ms. Shelby Brisbane  
Cornelius T. Carr  
Ralph Wayne Cooper III  
Mrs. Phoebe A. Driscoll  
Janet Evans  
Dr. and Mrs. Kenneth Frank\*  
Mr. and Mrs. Howard L. Gleit  
Nancy Grundahl  
Herbert and Nancy Hart  
John Jonik  
Tatyana Livshultz and Daniel Schott  
Matthew Osiecki  
Mr. and Mrs. Lee D. Peachey  
Mr. and Mrs. Robert M. Peck\*  
Nasreen and Charles Phillips  
Phyllis and Gary Rosenberg  
Dr. and Mrs. Alfred E. Schuyler\*  
James R. Spotila, PhD

#### Gifts in Kind

Rachel Buttner  
Crayola LLC  
CRW Graphics  
Ms. Linda V. Ellsworth\*  
Finnegan and The Hughes  
Eszteella Howell  
Jessica Lopa  
The PFM Group  
Subaru of America Foundation

\* *Sustainers Society*  
♦ *Deceased*



DESIGN: AGILECAT | EDITOR: MARY ALICE HARTSOCK

## BOARD OF TRUSTEES

As of September 30, 2016

#### Chair of the Board

Peter A. Austen

#### Trustees

John F. Bales III  
Jeffrey Beachell  
M. Brian Blake  
Amy Branch  
Amy Coes  
Abbie Dean  
Robert J. Delany  
Robert E. Drury  
Jeffrey E. Eberly  
John A. Fry  
George W. Gephart Jr.  
David E. Griffith  
Ellen D. Harvey  
Jun Huangpu  
Catherine T. Hunt  
David P. Lazar Sr.  
Page R. Leidy  
Sandra L. McLean  
Allen J. Model  
Michael H. Reed  
Van R. Reiner  
Gerald B. Rorer  
Ivy E. Silver  
Judith E. Soltz  
John J. Soroko  
Robert S. Victor  
Kenneth J. Warren

#### Emeritus Trustees

Edward A. Montgomery Jr.  
I. Wistar Morris III  
Seymour S. Preston III  
Minturn T. Wright III

#### Photo Credits

Cover: Trevor Dixon for ANS, Rocco Avallone for ANS

Inside Cover: Rocco Avallone for ANS; Page 1: Katie Clark/ANS, Jonathan Fried; Page 2: Kathryn Christopher/ANS; Page 3: Mike Servedio/ANS; Page 4: Roger Thomas/ANS; Page 5: Elizabeth Wenger/ANS, Therese Catanach/ANS, Allison Stoklosa/ANS; Page 6: ANS; Page 7: Betsy Payne/ANS, Canopy Adventure for ANS; Mike Servedio/ANS; Page 8: Mike Servedio/ANS; Page 9: Mike Servedio/ANS; Page 10: Emily Ostrow/ANS; Page 11: Emily Ostrow/ANS; Page 12: Emily Ostrow/ANS, ©Kelly & Massa Photography, Jonathan Fried; Page 15: Jeff Fusco for ANS, Rocco Avallone for ANS; Page 18: Dominic Episcopo for ANS; Page 19: Cora Rivera/Drexel University for ANS; Page 20: Cora Rivera/Drexel University for ANS; Page 21: Amanda Chan/ANS, Mike Servedio/ANS, Rocco Avallone for ANS; Page 22: Cora Rivera/Drexel University for ANS; Page 24: Cora Rivera/Drexel University for ANS; Inside Back Cover: Emily Ostrow/ANS





*Founded in 1812, the Academy of Natural Sciences of Drexel University is a leading natural history museum dedicated to advancing research, education, and public engagement in biodiversity and environmental science.*

THE ACADEMY OF NATURAL SCIENCES  
*of* DREXEL UNIVERSITY