







ANNUAL REPORT 2021 / 2022	PAGE
<b>Our Mission</b>	<b>3</b>
<b>Our Accomplishments &amp; Recognition</b>	<b>5</b>
<b>Our Impact</b>	<b>7</b>
We Understand Nature	9
We Build Resilience	15
We Democratize Science	19
We Drive Change	25
We Solve Problems	39
<b>New Leadership at the Academy</b>	<b>43</b>
<b>Board Members and Trustees</b>	<b>47</b>
<b>Statement of Activities</b>	<b>48</b>
<b>Thank You to Our Donors</b>	<b>49</b>
<b>Letter from President and Chair</b>	<b>63</b>



O U R M I S S I O N

**Understanding the natural world and  
inspiring everyone to care for it**



# Select Accomplishments & Recognition

11K

new biological specimens  
digitally cataloged and  
made accessible to  
scientists worldwide

100K

plastic water  
bottles saved from  
landfills and nearby  
waterways

\$9M

raised toward  
building a healthy,  
sustainable and  
equitable planet

*"An exhibition unlike anything else in the Academy's long history."*

The Philadelphia Inquirer

*"The Academy of Natural Sciences  
is leading a new campaign to  
encourage the general public  
to think twice about single-use  
plastic water bottles."*



*"The [Academy's] collection  
allows professionals and  
students alike to examine birds  
to learn more about the greater  
world around them."*



*"That within the tens of thousands  
of slides deposited in the recesses  
of the Academy are environmental  
breakthroughs waiting to  
be decoded."*

WIRED

Recognized by Media



The New York Times

metro

Audubon  
magazine

Hakai  
magazine

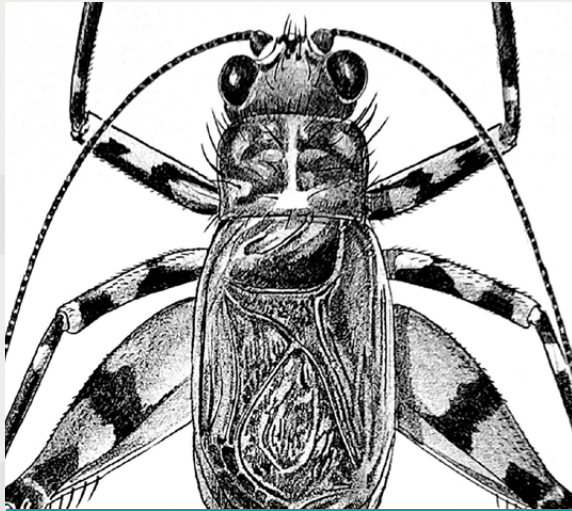
nature

WHYY  
PBS NPR

YaleEnvironment360



**The Academy is a force for nature** because we understand nature, build resilience, democratize science, drive change and solve problems.



**WE UNDERSTAND NATURE**

through the stewardship of our massive collections of biological specimens, books and archives available for Academy scientists and researchers around the world to accelerate discoveries in biodiversity, evolution and humanity’s impact on the planet. Our collections are vital to scientists across the globe in their work to better understand the composition and health of the natural world.

*Read more about our collections on page 9.*



**WE BUILD RESILIENCE**

by keeping our waterways healthy through the systems-level application of innovative science. From the establishment of the revolutionary Patrick Principle to the \$100M, multiphase Delaware River Watershed Initiative, we have led the science that has kept millions of people’s freshwater clean for 75 years.

*Read more about our water science work on page 15.*



**WE DEMOCRATIZE SCIENCE**

through our inclusive community science programs. The Academy is developing innovative, scalable programs that engage communities of interest and need, offer access to learning and education, and deliver social and scientific impact.

*Read more about our community science programs on page 19.*



**WE DRIVE CHANGE**

by creating environmental awareness through our broad-reaching thematic programs and campaigns. We are distinctive among natural history museums in focusing our resources on annual, collaborative efforts that connect to our mission-driven aims in climate, water, biodiversity and evolution.

*Read more about our thematic campaigns on page 25.*



**WE SOLVE PROBLEMS**

through our groundbreaking research and our partnership with The Environmental Collaboratory — a participatory platform co-created by the Academy and Drexel that unites both institutions with communities of need in a shared endeavor to sustain our planet and mitigate its degradation.

*Read more about The Environmental Collaboratory on page 39.*



A FORCE FOR NATURE™

**WE  
UNDERSTAND  
NATURE**



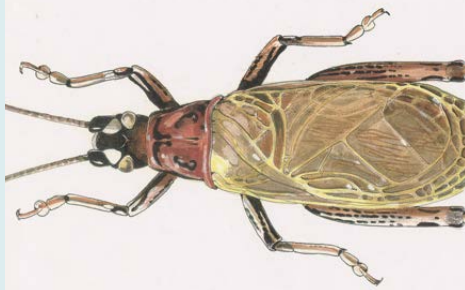
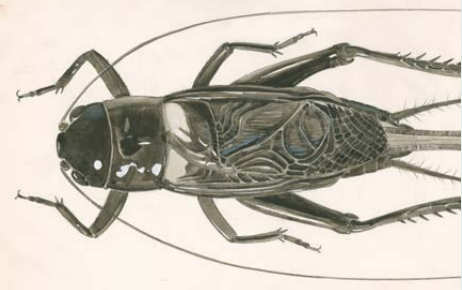
# The Sounds of Science

High up in the mountains, across sprawling valleys and deep into caves, Dan Otte, PhD, senior curator emeritus of the Entomology Collection at the Academy, has traveled all over the world capturing the songs of insect biodiversity.

WE UNDERSTAND NATURE

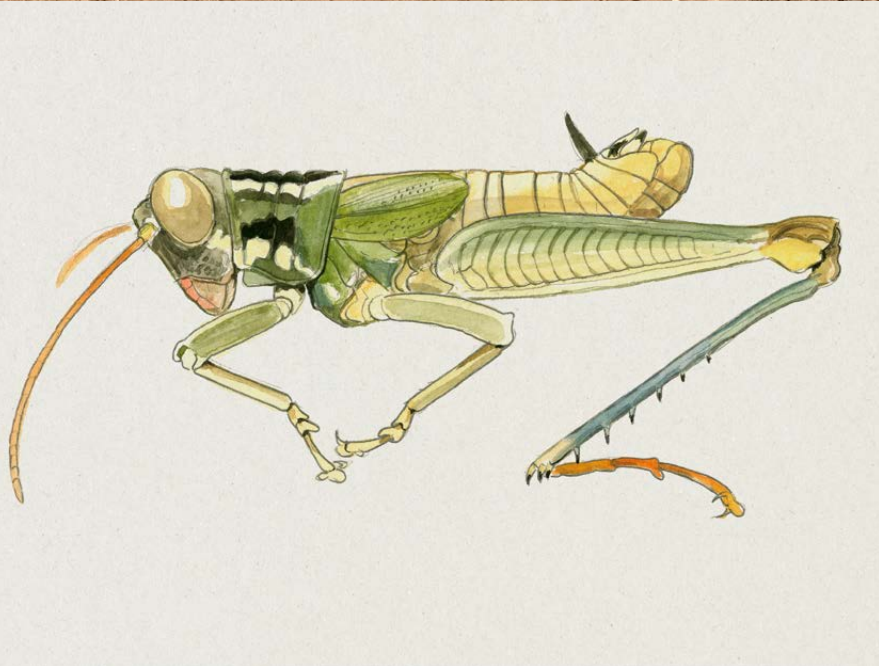


And it certainly wasn't easy. Working in the 1970s and 1980s, there were no field guides or books for researchers to identify the many species of grasshoppers and crickets; in fact, Otte had to create them. Using his broad-ranging travel experiences and deep-rooted knowledge, he is now author and illustrator of numerous scientific works, including the essential volumes on North American grasshoppers — helping entomologists and agriculturists alike to better visually identify these insects.



Now, with a prestigious and highly selective OPUS Grant from the National Science Foundation, one that synthesizes the life-long work of highly productive scientists, as well as another major nationally renowned Institute of Museum and Library Services grant to digitize some of his astounding collection, Academy scientists are making Otte's scientific discoveries and achievements in entomology accessible to the community through an entirely new medium — audio.

While Otte stomped through the grass collecting specimens of Orthoptera, which includes grasshoppers, crickets and katydids best known in the bug world for their use of sound to communicate, he also had the brilliant idea to document their various chirps and buzzes on hand-held tape recorders. Academy scientists were eager to have this enormous, lifetime tape collection digitized — now made possible with these grants.



"It is truly one of the most important and tremendous collections we have," said Jon Gelhaus, curator of the Academy's Entomology Collection. "Preserving these files for the long term, making them accessible to the scientific community so that we might not lose all this valuable information, it has been an absolute priority for us. And as an institution, this is just what we do."



Making these outmoded tapes accessible to new audiences, however, is easier said than done. "We've never dealt with something like this before," said Greg Cowper, project manager for the Otte Sound Archives. "While it was complicated and challenging, it was also exciting and rewarding, especially working with Drexel's audio engineers and archivists."

So far, Cowper and Drexel co-op Mikayla Traini have digitized over 200 physical cassette and reel-to-reel tapes using Drexel University's state-of-the-art recording studio, with help from Toby Seay, project director of the Drexel University Audio Archives. These archival-quality clips are now part of the same audio collection that houses "The Sound of Philadelphia" — thousands of Sigma Sound Studio master tapes.

By capturing these insect songs from across the globe and throughout several decades — especially in sensitive and fragile island ecosystems where some of the species may now be extinct — Otte has significantly revolutionized the scientific landscape for generations of explorers and listeners to come.





## Dan Otte's Lifetime Scientific Achievements

**25%**

of the world's known  
species of crickets  
described

**117**

scientific sites  
visited across  
the world

**1,850**

Orthoptera  
species new to  
science described





A FORCE FOR NATURE®

**WE  
BUILD  
RESILIENCE**



75 Years of  
Cutting-Edge  
Water Science

WE BUILD RESILIENCE



# Since 1947, the Academy's Patrick Center for Environmental Research.....

1947



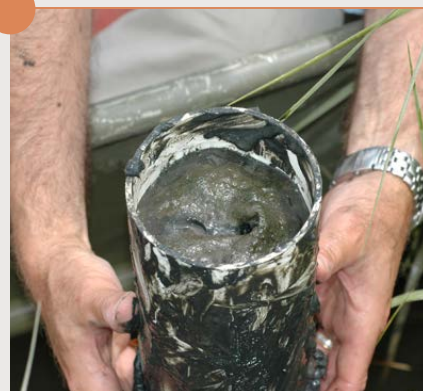
Pioneering environmental activist Ruth Patrick founded what is now known as the Patrick Center for Environmental Research at the Academy, creating one of the first institutional departments that explores the real-world ecological impacts of human activity.

1972

The Clean Water Act is established, revolutionizing our relationship with water across the nation, with Patrick Center scientists playing a critical role in its development and promotion.



1984



Cutting-edge research into harmful PCBs and contaminants with on-the-ground fish studies of the Housatonic River established best practices for pollution damage control in waterways across the United States.

2000

Authoring the first study of its kind, Patrick Center scientists fundamentally shaped the scientific community's understanding of the ecological and economic impacts of dams on nearby communities.



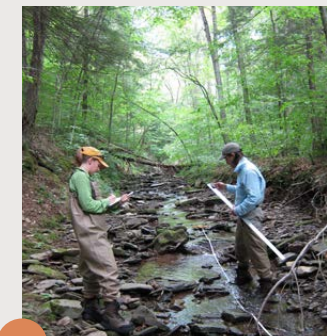
2006



The Delaware River Basin Commission, as well as the Environmental Protection Agency, DuPont and Amtrak, enlisted Patrick Center scientists for their expertise in fish ecology to help set new standards for industry contaminant levels in major water resources across four states.

2010

Initiating groundbreaking work on the impact of Marcellus Shale fracking on creeks and streams in the Delaware River watershed, Patrick Center scientists championed environmental justice by testifying to local and federal governments about the importance of clean water for all.



2011



The renowned Delaware River Watershed Initiative is created and scientifically led by the Patrick Center, bringing together 60 local environmental organizations with countless stakeholders and community members to support safe, clean and renewable water resources for 15 million people.

2021

In partnership with U.S. Fish and Wildlife Service, Patrick Center scientists provided technical leadership in the Delaware River Basin Conservation Blueprint, a new project to identify major conservation and equity issues all along America's Northeast Coast.



has been devoted to understanding, protecting and restoring the health of waterways for everyone. From the transformative development of the Patrick Principle to the real-world, research-based work with community members and stakeholders, Patrick Center scientists have built an enduring legacy of clean water advocacy and sustainability.



A FORCE FOR NATURE

# WE DEMOCRATIZE SCIENCE



# Lights, Camera, Action

Sean Stallworth of the Academy's Community Learning Division reflects on the success of Black Excellence in Birding: "We wanted to create something meaningful, impactful, something so much bigger than we could imagine."

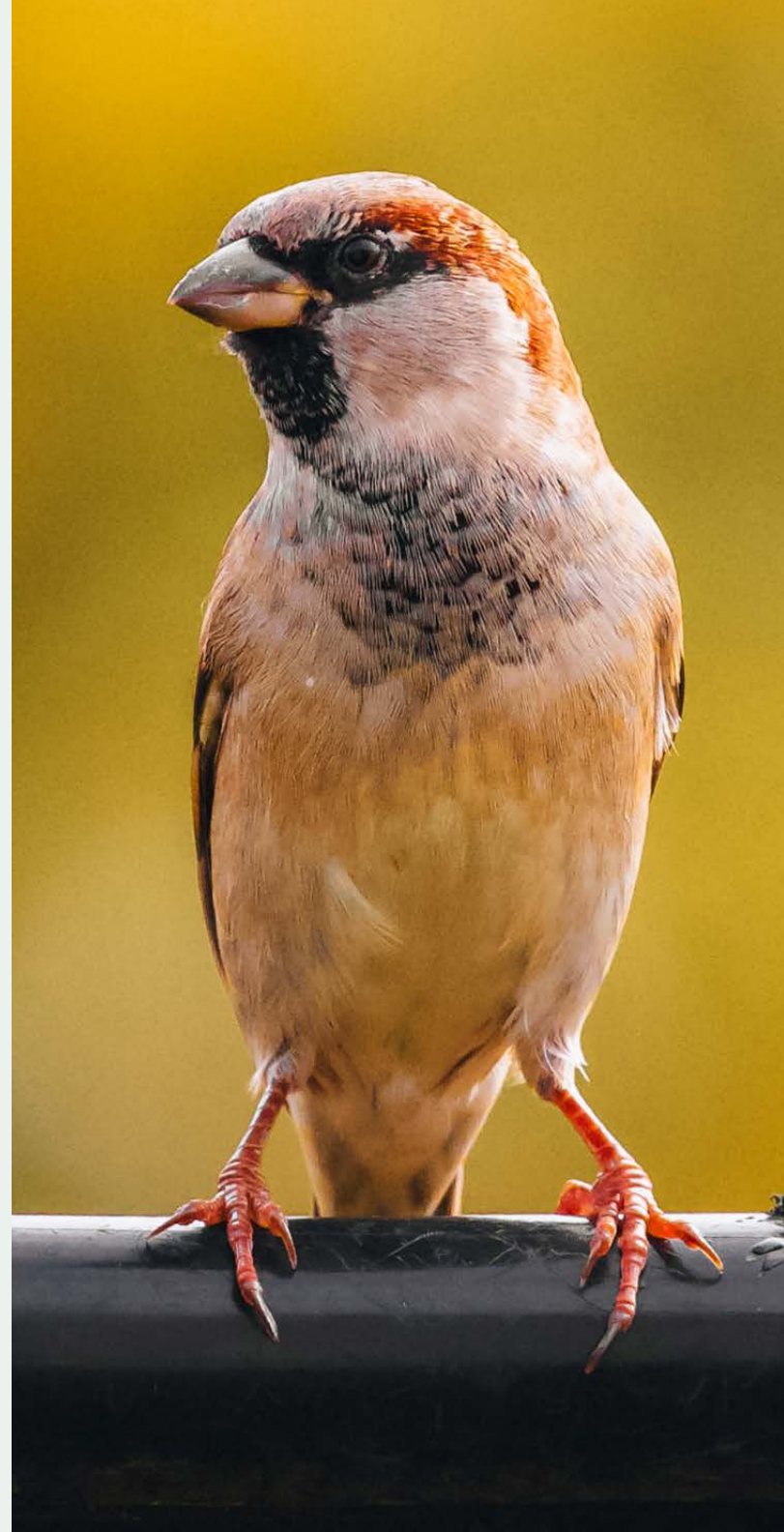




And that's exactly what this team did. A dazzling, sold-out event, Black Excellence in Birding was created to kick-off Black Birders Week, a national series that highlights Black nature enthusiasts and aims to increase the visibility of Black birders, who face unique challenges and dangers when engaging in outdoor activities.



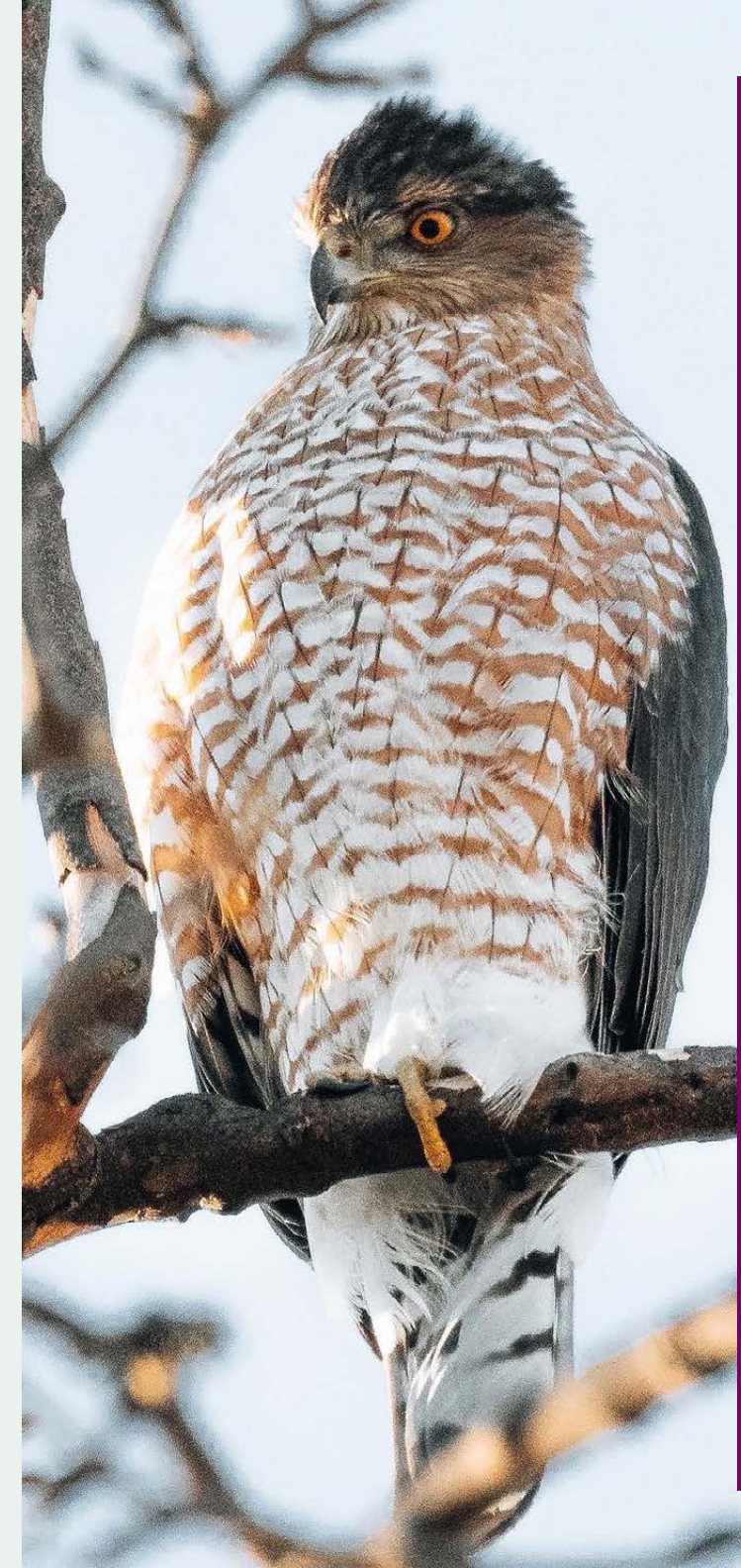
It was an ornithological night to remember and the first in the Academy's long history. Created in partnership with the African American Museum of Philadelphia and In Color Birding, with whole-hearted support from the BlackAFinSTEM Collective, the event brought together Academy scientists and guests with some of Philadelphia's most well-known Black birders.



The halls were filled with sparkling style, celebratory cocktails and exciting sightseeing tours. Panel discussions — which included Tykee James, Corina Newsome, Jason Hall and the Academy's Lead Keeper and prominent wildlife photographer Anwar Abdul-Qawi — provided opportunities to hear their real-life stories and successes.



"We've got a vision here at the Academy that is more inclusive, active and supportive," said Stallworth. "But it all comes down to change. There's 200 years of amazing history here, and now we — the Black community — are really part of that story."







## Jason Hall

Founder of In Color Birding

The joy. The laughter. The common understanding we shared being Black and brown folks stepping into the Academy as our full and vibrant selves. At least three generations of nature and bird enthusiasts collectively filling up each other's cups within walls that have inspired so many Philadelphians. This night set a standard and example for our city and our country. It was in fact filled with excellence.



## Tykee James

Sr. Government Affairs Representative  
for The Wilderness Society

We created an atmosphere of affirmation to celebrate Black people who bird and uplift stories of our historic connection to nature. The joy in the room was unextractable, unapologetic and reinforced the necessity and benefits of spaces for people who have been historically excluded from white spaces. I look forward to seeing how the Academy can meaningfully contribute to the creation of these spaces in the future as well as be a thought-leader on collaboration with the Black community in Philadelphia.





A FORCE FOR NATURE<sup>®</sup>

**WE  
DRIVE  
CHANGE**



Creating  
Awareness,  
Building  
Understanding  
and Inspiring  
Action

**WE DRIVE CHANGE**



# Making Clean Water a Priority

Plastic-free Philly, an enormous collaborative, city-wide initiative led by the Academy, launched this year with a powerful, straight-forward aim: to reduce the flow of single-use plastic water bottles.



The Academy found new and inspiring ways to achieve this goal. Partnering with the Building Owners and Managers Association (BOMA) and the Building Industry Association (BIA), as well as the local art gallery HOT•BED Philly, we spearheaded 10 large-scale installations in high-profile locations across the city.

"What a terrific way to promote the reduction of single-use plastic water bottles!" said Deanna Ballinger, chair of BOMA Philadelphia. "We're honored to host the beautiful work of the artists and spread the word to use less plastic." HOT•BED Philly's Creative Director Bryan Hoffman added, "The opportunity to support Plastic-free Philly, Philadelphia and the Academy through art was, to me, a natural fit."

Each piece, created by local artists with diverse approaches, uniquely examines how our plastic habits impact the ecosystem — sparking conversation, connecting people to the watershed



and inviting them to join the Plastic-free Philly movement. The campaign received significant media coverage by WHYY, 6 ABC, NBC 10, *Philadelphia Magazine*, *Metro*, *Grid Philly* and many others.

To drive change and make a real difference, we partnered with local clothier company United By Blue and the Philadelphia Water Department to encourage tap water use and join local clean-ups. This resulted in hundreds of pledges to ditch plastic bottles and thousands of pounds of trash collected from local waterways.

This was only the beginning. The Plastic-free Philly clean water movement has plans to continue catalyzing environmental change in the city and beyond.





## Kate Leibrand

Plastic-free Philly Artist of *Choking Hazard*

As a Philadelphia resident, a city dweller who also loves being outside and in nature, I see a ton of trash. I see plastic everywhere. I wanted to make a piece that talked about this pollution I see all the time. I decided to go with pilings and these smaller organisms that we don't usually see in the water because they are ingesting micro-pollution.

The point of the piece is to make it beautiful and draw a viewer in. So, I wanted it from far away to be this bright, colorful, patterned piece that people are immediately drawn in to, but once you're in it, you realize that the tiny details are all made of trash that are actually very harmful to the environment.

I think it's incredibly important for us to all start paying more attention to plastic waste — for not only ourselves but for anybody who comes after us.





# Creating a Watershed Moment



"Bullfrogs rumble through the Dietrich, the benches capturing deep music pumping right through the wood; peepers are everywhere; geese create a frothy racket; water gushes through timbers... This is the immersive world of sound artists and composers Liz Phillips and Annea Lockwood, who have created an exhibition unlike anything else in the Academy's long history," Stephan Salisbury of The Philadelphia Inquirer wrote of our remarkable exhibit, *The River Feeds Back*.



A dynamic soundscape that explored the importance of water in a wholly new way, *The River Feeds Back* provided visceral, one-of-a-kind moments in which visitors were transported to the subaquatic worlds of the Schuylkill River and its nearby streams by creative listening portals arranged throughout the Dietrich Gallery.



This new experience gave voice to the life — the story — of this vitally important river through the powerful medium of sound.

As part of *Watershed Moment*, our bold, multi-faceted signature Water Year project, *The River Feeds Back* was accompanied by a sound arbor open to the public on the Schuylkill River created by the two artists. Called *Inside the Watershed* — where the vibrating music of the river ebbs and flows with the sounds of the city — this piece culminated our thought-provoking art adventure walk, *How to Get to the River*, created by New Paradise Laboratories.

Uniquely designed to connect people with their local waterways and the vital need to protect them, *Watershed Moment* was supported by The Pew Center for Arts & Heritage.

The Pew Center  
for Arts  
& Heritage





## The River Feeds Back Sound Artists, Liz Phillips and Annea Lockwood

This project has been over 10 years from conception to realization. As two lifetime nature walk listeners, recorders and responsive artists of over 60 years, we think the Schuylkill River was perhaps the most surprising and exciting to hear. The high flickers of insects and frogs from upriver mix with on-location underwater sounds. The most musical air bubbles rise in near and far space across the river from plants releasing oxygen when the tide is low. Fish echolocate, jump and can be heard roaming in schools, waiting for the fish ladders to become accessible, the tides to rise. It teems with life!

”

*We are deeply grateful  
for this opportunity to celebrate  
water and the importance of the  
Schuylkill River to Philadelphia.*

— Annea Lockwood, Sound Artist



WE DRIVE CHANGE



# Designing the Future with Student-led Innovation

With the launch of the Museum Innovation Fund this year, an initiative that supports exciting, interdisciplinary projects by Drexel's faculty and students, the Academy is creating new, futuristic ways to approach museum learning and engagement.



Through this initiative, the Academy is establishing an open innovation culture — one that promotes prototyping, nurtures fresh thinking and encourages purposeful experimentation.



To do this, the Academy provides seed grants to select projects that creatively apply art, science and engineering to the reimagination of the museum experience.

Program Director and Assistant Professor Raja Schaar, at Drexel's Westphal College of Media Arts and Design, was among the first awardees with the class project "Dioramas of the Future."

Schaar's experience captures the powerful cross-functional capacity of just a single seed-grant project. In collaboration with numerous Westphal professors working across programs — including Product Design, User Experience and Interaction Design as well as Digital Media and Virtual Production — this project presented student-generated ideas to both spark conversation and inspire different ways of exploring the Academy's dioramas.



"Our students were excited to conceptualize and prototype a range of ideas," Schaar said, "from mobile applications to interactive kiosks, projections and exhibition furniture that took advantage of augmented and virtual reality technologies to bring the museum to life."



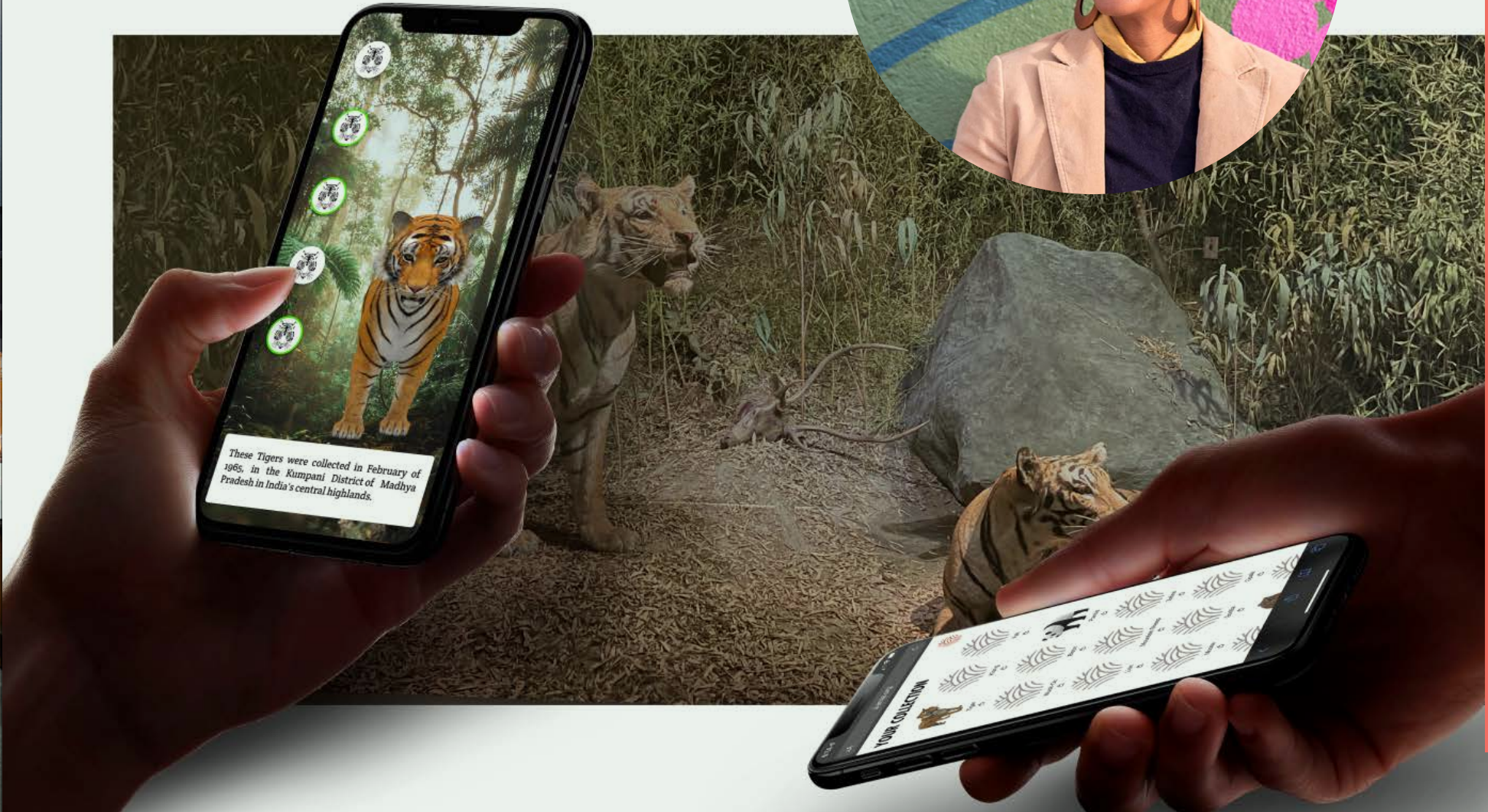
Other awarded projects include public demonstrations of green water infrastructure with local middle school students and developing solutions to plastic pollution in Philadelphia's rivers with the College of Engineering.

The Academy's collections and dioramas provide insights into the past and present — our programs offer glimpses of the future.



Raja Schaar  
Program Director and Assistant Professor  
in Product Design at Drexel University

Our goal was to use technology to augment the museum experience and inspire immersive engagement with the exhibitions. It was an opportunity to reengage our students with Drexel's larger community, emerging technology and themes related to climate change. It's an exciting time to explore technology's relationship to traditional forms of storytelling in museums and interpretive spaces.





A FORCE FOR NATURE™

**WE  
SOLVE  
PROBLEMS**



# Launch of The Environmental Collaboratory

The world is facing countless environmental emergencies and there is no single fix. From confronting the challenges of climate change to addressing freshwater access and pollution, a radically new approach is needed.

WE SOLVE PROBLEMS





One that can connect the diverse skills of subject-matter experts to the local knowledge and lived experiences of impacted communities. One that not only solves environmental problems, but also addresses the values and beliefs that have led to them in the first place.



Launched this year by the Academy and Drexel University, The Environmental Collaboratory is a groundbreaking interdisciplinary research and civic engagement platform that will meet these needs by uniting communities, academics, corporations, nonprofits and government agencies in a shared endeavor to identify environmental issues, co-generate user-inspired research and implement practical solutions in service of a fundamentally more equitable planet.



And The Environmental Collaboratory's work has already begun. Grants have been awarded to multiple projects with new community-centered approaches, such as addressing the impacts of lead within West Philadelphia's homes, mitigating the city's air pollutants and their sources, documenting environmental injustice through film and developing climate change policies with data.

"We cannot solve these environmental problems with a myopic view of what a solution looks like," said The Environmental Collaboratory's Executive Director Mathy Vathanaraj Stanislaus. "I think everyone, in whatever field that they're in, must see themselves in this incredibly important work, because these solutions require multiple disciplines and backgrounds."

The Environmental Collaboratory is truly forging new and collaborative territory.



# New Leadership at the Academy

With diverse and world-class experience, four new individuals have been welcomed to the Academy this year, further unlocking the institution's extraordinary potential as a force for nature.



## Pedro Raposo

**Martha Hamilton and I. Wistar Morris III**  
Executive Director, Library and Archives

An academic with a doctorate from the University of Oxford as well as a seasoned library and archives professional, Raposo — who joins us from the renowned Adler Planetarium in Chicago — harnesses the power of a collection's immense potential for storytelling through his expansive vision and passion for public engagement, science and history. He is also a gifted guitarist.

*"I am thrilled to be part of the Academy — a wondrous place hosting world-class collections, research and exhibits as well as public and community engagement programs, where I get to work with an incredibly talented and dedicated team. Our Library and Archives offer endless clues and pathways to better understand how the natural and environmental sciences have evolved over the centuries, at the Academy and beyond. As we welcome new perspectives and multiple voices, our rare books, historical documents, works of art and many other library and archival materials are sure to provide a multitude of informative, surprising and thought-provoking stories that can inspire positive change. Helping unveil those stories and share them with the world is what gets me pumped to come to work every day."*





## Kim Reynolds

### Executive Director, Institutional Advancement

From Florence to Philadelphia, from communications to advancement, from for-profit to non-profit, and finally from art to nature, Reynolds's remarkably diverse career arc — including most recently her work in development at the Brandywine Conservancy & Museum of Art — has centered on creating meaningful, long-lasting connections that result in significant mission-aligned support. An avid gardener and amateur paleontologist, she is happiest when up to her elbows in dirt.

*"I'm honored to have joined the talented and dedicated team at the Academy of Natural Sciences. Science matters, acting now on behalf of our planet matters, and it is an incredible feeling to know that the work I do truly matters. Together, with my amazing colleagues, we are creating an impact, making a positive difference, supporting our scientific research and world-class collections and ultimately helping our communities connect to the wonder of nature all around us."*



## Marina McDougall

### Vice President, Experience and Engagement

A pioneering informal educator with experience forged at San Francisco's renowned Exploratorium, McDougall brings to the Academy a rich vision for interdisciplinary and participatory programming that advances our understanding of science through the innovative use of both the arts and humanities. A trustee of the Museum of Jurassic Technology, she also loves dinosaurs.

*"I'm thrilled to join the Academy at this exciting juncture. Over the last year, we have made substantial progress toward manifesting the new vision for intergenerational public experience at the Academy which calls for meaningful approaches such as bringing the Academy's astounding scientific research, collections and libraries and archives to the fore; integrating the arts and humanities into our programming; collaborating with community partners through co-creation; working closely with Drexel faculty and students; and giving voice to a diversity of perspectives. It's a joy to work with so many amazing people to meet the new possibilities and complexities of our times in dynamic ways."*



## Maurice Baynard

### Vice President, Community Learning

With a scholarly background in deep-rooted and wide-ranging scientific interests, a passion for STEM education and a groundbreaking experience as the first director of diversity, equity and inclusion at the University of the Arts, Baynard brings a true sense of community-centered and impact-focused innovation to the Academy. He is also co-producer and host of The 10,000 Hours podcast.

*"Quite simply, this is the opportunity of a lifetime. I've spent a career in laboratories and lecture halls, building programs to increase the flow of great and curious minds in the playground-to-PhD pipeline. Our Community Learning Division here at the Academy offers me the opportunity to bring all these experiences to bear with a single amazing team of folks. The Academy is truly a learning environment and institution of inquiry where all members of the community have full access to the knowledge and research that addresses our collective vital concerns and illuminates our complex environment. It is full of people who are passionate and have such knowledge about what they do every day and I think it's rare to find a place where you love every conversation you have at work."*



# Board of Trustees

As of March 15, 2022

Joshua C. Anthony, PhD

Jeffrey A. Beachell

Amy L. Branch

Erica L. Carpenter, MBA, PhD

Scott A. Cooper, PhD *(President and CEO)*

Maureen Craig

Christopher Crockett, PhD, PE

Abbie Dean *(Vice Chair)*

Robert J. Delany *(Treasurer)*

Suzanne Eveland

Jason Friedland

John A. Fry

Marc E. Gold

David E. Griffith *(Chair)*

Latasha D. Harling, CCP, SHRM-SCP

Kevin Kowalick

Rashaad S. Lambert

Sandra McLean

Allen J. Model

Jeffrey Morgan du Pont Nielsen

Ron M. Philip

Michael H. Reed, Esq. *(Vice Chair)*

Gerald B. Rorer

David Rusenko

John F. Smith III, Esq.

Michael K. Tucker, Esq.

Robert S. Victor *(Secretary)*

Sharon L. Walker, PhD, F. AEESP, F. AAAS

## Emeritus Trustees

John F. Bales III

Cynthia P. Heckscher

Edward A. Montgomery, Jr.

I. Wistar Morris III

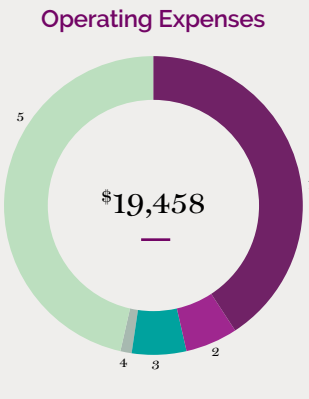
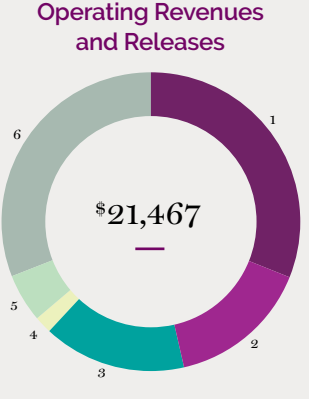
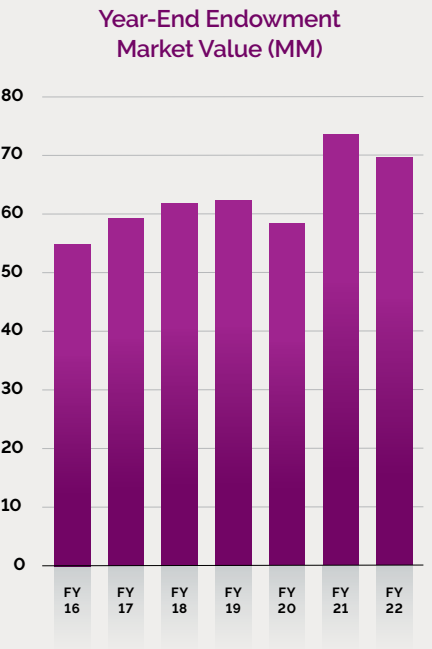
Minturn T. Wright III



# Statement of Activities

For the Year Ended June 30, 2022 (in thousands)

Endowment Growth (in millions)		
2022	Jun 30	69.154
2021	Jun 30	73.266
2020	Jun 30	58.758
2019	Jun 30	61.880
2018	Jun 30	62.198
2017	Jun 30	59.741
2016	Jun 30	55.032



The groundbreaking academic department, **Biodiversity, Earth & Environmental Science (BEES)**, formed upon the affiliation of the Academy and Drexel University, had a full-time equivalent enrollment of 187 students in the 2021-2022 academic year.

Operating Revenues and Releases	Without Donor Restrictions	With Donor Restrictions	Total
1. Grants and Contracts	\$4,263	\$2,151	<b>\$6,414</b>
2. Contributions	1,398	1,969	3,367
3. Allocations of Endowment Spending from Financial Capital	684	3,058	3,742
4. Investment Income, Net	354	17	371
5. Auxiliary Enterprises	1,407	–	1,407
6. Other Income	6,160	6	6,166
<b>Total Revenues</b>	<b>\$14,266</b>	<b>\$7,201</b>	<b>\$21,467</b>
Net Assets Released from Restriction	5,301	(5,301)	–
<b>Total Revenues and Releases</b>	<b>\$19,567</b>	<b>\$1,900</b>	<b>\$21,467</b>

## Operating Expenses

1. Salaries and Wages	\$7,384	–	\$7,384
2. Employee Benefits	1,758	–	1,758
3. Depreciation and Amortization	1,347	–	1,347
4. Interest	2	–	2
5. Other Operating Expenses	8,967	–	8,967
<b>Total Expenses</b>	<b>\$19,458</b>	–	<b>\$19,458</b>
<b>Increase in Net Assets from Operating Activities</b>	<b>109</b>	<b>1,900</b>	<b>2,009</b>

## Non-operating

Contributions - Endowment and Other Gifts	\$58	\$1,020	\$1,078
Realized/Unrealized Net Gain (Loss) on Investments, Net of Endowment Payout and Expenses	(140)	(6,671)	(6,811)
Change in Funded Status of Defined Benefit Plan	1,066	–	1,066
<b>Increase / (Decrease) in Net Assets from Non-operating Activities</b>	<b>984</b>	<b>(5,651)</b>	<b>(4,667)</b>
<b>Total Increase / (Decrease) in Net Assets</b>	<b>1,093</b>	<b>(3,751)</b>	<b>(2,658)</b>
Net Assets, Beginning of Year	\$5,727	\$90,161	\$95,888
Net Assets, End of Year	\$6,820	\$86,410	\$93,230



# Thank You

On behalf of the Academy's Board of Trustees, we wish to recognize and thank those supporters who contributed to the Academy between July 1, 2021 and June 30, 2022. Your generosity helps to fund the Academy's scientific research and education programs, and we are tremendously grateful. Because of your steadfast support of the Academy, our science never stops.

## \$1,000,000 and Up

Estate of Beverly Hattersley  
Martha H. and I. Wistar Morris III

## \$200,000 to \$999,999

Anonymous  
The Arcadia Foundation  
Boeing  
The Cotswold Foundation  
Kline & Specter, P.C.  
Thomas R. Kline Esq.  
The Lenfest Foundation  
Pew Center for Arts and Heritage  
RJM Foundation

## \$100,000 to \$199,999

E. Rhodes and Leona B. Carpenter Foundation  
GlaxoSmithKline  
The Horace W. Goldsmith Foundation  
Institute of Museum and Library Services

## \$50,000 to \$99,999

Anonymous  
Amy Branch and Jeff Benoliel  
Jenny Rose and Gus Carey  
Jacqui and Dave Griffith  
Hamilton Family Charitable Trust  
Jenny Rose and Gus Carey  
Family Charitable Fund  
The McEwen Family Scholarship Fund  
at Modern Group LTD.  
Morgan Stanley Global Impact Funding Trust  
SNAVE Foundation

♦ Deceased

## \$25,000 to \$49,999

Anonymous  
Aqua America, Inc.  
AstraZeneca  
The Brodsky Foundation  
Lois and Julian Brodsky  
The Charles E. Ellis Grant and  
Scholarship Fund  
Community Foundation of Greater Memphis  
Thomas Dolan IV♦  
E. Walker Mulherin, Jr. Fund of the Community  
Foundation of Greater Memphis  
The Hess Foundation, Inc.  
Jun Huangpu and Xia Li  
Jane C. MacElree Family Foundation  
Leo Model Foundation, Inc.  
LTM Family Foundation  
Mrs. Jane C. MacElree  
Marshall-Reynolds Foundation  
Linda and Tom McCarthy  
Diane and Seth McDowell  
Ms. Sandra Lee McLean  
Mr. Allen J. Model and Dr. Roberta E. Gausas  
Ms. Alexandra U. Moede  
Mr. and Mrs. Robert M. Peck  
Pennsylvania Historical and  
Museum Commission  
Mrs. Jean Preston  
Mr. and Mrs. Gerald B. Rorer  
Mrs. Joly W. Stewart  
Elaine W. Camarda & A. Morris Williams, Jr.  
Minturn T. Wright III

## \$10,000 to \$24,999

2004 Carita Foundation, Inc.  
Mary and Peter Austen  
Joseph F. Baker and William Shaw Mulherin  
Jeffrey A. Beachell  
Blue Sky Family Foundation



BNY Mellon Wealth Management  
Dr. Erica Carpenter and Mr. Robert Carpenter  
The Center for Molluscan Studies  
The Charles Wentz Carter Memorial Foundation  
The Claneil Foundation  
Amy and R. Putnam Coes III  
Dana and Neil Cohen  
Maureen Craig and Glenn Goldberg  
Ms. Maude de Schauensee  
Abbie and Patrick Dean  
Ralph C. Eagle Jr., M.D.  
Suzanne and Mark Eveland  
Marilyn Fishman and James MacElderry  
Katy and Jason Friedland  
Pat and Dan Fromm  
Giant  
The Glenmede Trust Company  
Sharon and Marc Gold  
Ellen Harvey and Tad G. Sperry  
Cynthia and Martin Heckscher

Helen D. Groome Beatty Trust  
Hoxie Harrison Smith Foundation  
John and Susan Smith Family Fund  
Keep Pennsylvania Beautiful  
Karen and Wayne Lattuca  
The Legnini Family  
Marc Gold and Sharon Stumacher Gold  
Charitable Fund  
The McLean Contributionship  
Mrs. Elizabeth P. McLean  
Katie and Bill McNabb  
Edward A. Montgomery Jr.  
Theresa and Ranney Moran  
OOS Charitable Corporation  
Origlio Beverage  
Kathleen L. Pereles  
Ron Mammen Philip and Reni Philip  
Post Brothers  
The Rorer Foundation, Inc.  
Mr. Herbert T. Rorer

Carol and Art Silverman  
Susan Jane Brown and John Smith  
Ann and Martin Avery Snyder  
Mr. and Mrs. John Jeming Soroko  
The Sparvey Fund  
Oona Sperr  
Mrs. Corinne J. Stahl  
Mr. and Mrs. Michael Tucker  
Bob Victor and Alexandra Edsall  
Victor-Edsall Family Fund  
Wawa, Inc.  
The Wayne and Karen Lattuca Charitable Fund  
William Penn Foundation

## \$5,000 to \$9,999

Archway Community Properties, LLC  
Jane and John Bales  
Sheila and Myron Bassman  
Peter A. Benoliel and Willo Carey  
Brian R. Ford Sr. Family Fund

Christian R. & Mary F. Lindback Foundation  
The Christopher Ludwick Foundation  
Dolfinger-McMahon Foundation  
Elizabeth P. McLean Charitable Fund  
Evelyn and Brian Ford  
Ms. Elizabeth H. Gemmill  
Gretchen and Jay Riley Gift Fund  
Growing Great  
Mrs. Penelope P. Harris  
John & Dorothy Schmidt Family Foundation  
The McCausland Foundation  
Bonnie and Peter McCausland  
Morgan Lewis  
Neubauer Family Foundation  
Jeanette Lerman-Neubauer and Joe Neubauer  
Barbara Oldenhoff  
Dawn and Fen Pate  
PECO  
Barbara and Michael Perilstein  
The Philadelphia Foundation  
Philip Family Donor Advised Fund of  
BOA Charitable Gift Fund  
Renewal by Andersen of Greater Philadelphia  
Republic Bank  
Gretchen and Jay Riley  
Dr. John P. Schmidt  
Judith Soltz and Richard Belas  
Vandy Charitable Foundation  
Veritable, LP  
Walter J. Miller Charitable Trust  
Suzanne and Robert Welsh  
West Pharmaceutical Services, Inc.

## \$2,500 to \$4,999

Anonymous  
Affleck Family Charitable Trust  
Mr. and Mrs. John A. Affleck  
Ms. Sarah S. Alfadl  
Mr. and Mrs. Pierce Archer  
Kathleen and John Berkowitz  
Jean G. Bodine♦  
Julia and John Buonagurio  
Susan and R. Kent Cadwalader  
Clean Tech Services Inc.  
Suzanne and Charles W. Cruit  
The Daeschler Family Fund



Emily and Ted Daeschler  
Mrs. Nancy B. Davis  
Rodney D. Day III  
Delaware Valley Ornithological Club  
Sandra Drayer and  
The Honorable Calvin S. Drayer  
Mr. and Mrs. V. Richard Eales  
Jane I. Earle  
Fidelity Charitable  
Dr. Janice T. Gordon  
Anne and Matt Hamilton  
Jane and Paul Heintz  
Jessie B. Hill  
Joan Nathan and Jim King  
Kevin and Jennifer Kowalick  
Kenneth Kulak and Katherine Hovde  
Mr. John T. Lehman  
Joanna McNeil Lewis  
Elizabeth R. McLean  
Lisa and Jeff Miller  
National Philanthropic Trust  
Arthur E. Newbold IV  
Pennoni Family Foundation  
C. R. "Chuck" Pennoni  
Pfizer, Inc.  
Margaret and Tom Ralph  
Remer Green Family Fund  
Rosalind Remer and James Green  
Kimberly and Joe Reynolds  
The Rittenhouse Foundation  
Saint-Gobain  
Joanne and Bruce Shanzer  
Cathy and Bill Siegl  
Wong Giving Fund  
Stephen and Catherine Wong

\$1,000 to \$2,499

Anonymous (2)  
Franny and Franny Abbott  
The Albert Trust

♦ Deceased

Ms. Ellen Anderson and Mr. Brantly Rudisill♦  
Dr. Valerie A. Arkoosh and  
Mr. Jeffrey T. Harbison  
Mrs. Ellen Asplundh  
Austelle Foundation  
James and Janet Averill  
Kenneth S. Blackney and Robert R. Ditto  
Bluestone Foundation  
The Buck Family Fund  
Bill and Laura Buck  
Elinor Hosterman Buck and James M. Buck III  
Sheryl and Bill Bullitt  
Nancie and Theodore Burkett  
Catherwood Family Fund  
Susan and Cummins Catherwood  
Cheryl and Radcliffe Cheston  
Christopher B. Asplundh Family Fund  
of the Philadelphia Foundation  
The Cliffe and Cheryl Cheston Charitable Fund  
The Colket Foundation  
Mrs. Ruth M. Colket  
Comcast NBCUniversal  
Maria and Barry Craze  
David and Eileen Eskin Family Fund  
Patty and Rob Delany  
Mrs. Edward V. Dillon  
Dr. Gudrun Dauner and Mr. Derick Dreher  
Drs. Robert and Marie Benz  
Charitable Foundation  
The Dry Family Charitable Foundation  
Constance and Paul Dry  
Tom and Ellie Elkinton  
Elliott Rosenberg Donor Advised Fund of the  
Jewish Community Foundation, Inc.  
Robert W. Ellis  
David and Eileen Eskin  
Peter A. Evans  
Ms. Mary L. Felley  
Ms. Helen H. Ford  
Forney Family Foundation  
Mrs. Marilyn Forney  
Alexandria Garrity and Elizabeth McCampbell  
The George & Elizabeth Gephart  
Charitable Fund  
Mr. and Mrs. George W. Gephart Jr.  
Gilroy & Lillian Roberts Charitable Foundation

Scott Goldman and Maryalice Cheney  
Mr. and Mrs. Richard Greenawalt  
Drs. Vivian and Mark Greenberg  
The Hamilton Family Foundation  
Barbara Hauptfuhrer  
Mr. and Mrs. Peter H. Havens  
Dr. Gail W. Hearn  
Holt Weil Fund  
Hufty Foundation  
Independence Foundation  
J.P. Morgan Charitable Giving Fund  
The Jacqueline M. Griffith Fund  
Yardly and Scott Jenkins  
The Jewish Community Foundation  
Katzenbach Family Charitable Fund  
Brooke and Tom Katzenbach  
Nancy and Chris Kennedy  
Kent-Van Alen Fund at Schwab Charitable  
The Lapham Family  
Ms. Frances H. Leidy  
Courtney and Page Leidy  
Dr. Egbert G. Leigh Jr.  
Leslie Miller and Richard Worley Foundation  
Maxine S. Lewis  
John Lundberg and Lucinda McDade  
Patricia and Raymond Major  
Malfer Foundation  
Ms. Dagmar E. McGill  
Daniel Moerman and Claudine Farrand  
Ms. Diane L. Myer  
Joseph A. O'Connor Jr.  
Joseph O'Hare and Wallace Beard  
Mr. and Mrs. Lanny R. Patten  
Mr. and Mrs. George Putnam III  
Kathy Putnam  
Ann and Frank Reed  
Michael Reed and Yalta Gilmore-Reed  
Sean Rhoads and Keri Fisher  
Jennifer Merves Robbins and Brian Robbins  
The Robert P. and Barbara D. Hauptfuhrer  
Philanthropic Fund  
Caroline B. Rogers  
The Rounds  
Andrea Rowe and Benjamin Stahl  
The Honorable and Mrs. W. Hart Rufe III  
Mr. and Mrs. David A. Rusenko



Samuel P. Mandell Foundation  
Jane and Scott Satterfield  
Bonnie Schorske  
Drs. Karen and Robert Sharrar  
Stephen Smith and Ellen Kurtz  
Sidney and Stewart Spahr  
Jamie Stewart  
Patricia Tyson Stroud  
Mr. and Mrs. L. Pierre Teillon Jr.  
John A. Terrill and Mary Jane Barrett  
Karen and Albert Toth  
Mrs. Susan Pepper Treadway  
Mr. and Mrs. Richard Tregerman  
Mr. and Mrs. James L. Van Alen  
Deborah Weil  
John Whitenight and Fred LaValley  
Signe Wilkinson and Jon Landau  
Mr. and Mrs. Peter Wilmerding  
Jean and John Witmer  
Richard B. Worley and Leslie Anne Miller

\$500 to \$999

Anonymous (2)  
Joan and Richard Andren  
Nancy and Frederick Bissinger  
The Blynn DA Fund of Vanguard Charitable  
Barbara and Clarke Blynn  
Marie Carroll  
Joan and Joel Chinitz  
The Cleveland Family Charitable Fund  
Nancy and Robert Cleveland  
Barbara Cobb  
Carol and Richard Collier  
Rhoda and Michael Danziger  
Kitty and Bob DeMento  
L. Stuart Ditzen and Denise Cowie  
Natalie and Alan Eisen  
F. L. Bissinger, Inc.  
Drs. Pamela and Peter Freyd  
William J. Frezel  
Julie and Mitch Gerstein  
Frank Gill and Sally Conyne  
Kara and John Goodchild  
Dr. Page Talbott and Mr. James E. Gould  
Tamar and Marshal Granor

Mr. Joseph Gruber  
Alice and Peter Hausmann  
David J. Hellen and Dr. Margaret J. Godbey  
Katherine and Fredrik Hiebert  
Lois V. Hill  
Dr. Lesley Ann Hughes  
JacobsWyper Architects  
Mr. and Mrs. Craig N. Johnson  
Denise and Michael Kaplan  
Kyle Kernozek and Michele Dickey  
Rebecca Kriss and Nicholas Stanley  
Mr. Thomas Lloyd  
Mr. William A. Loeb  
John Makara and Kathy Patterson  
Ms. Robin L. Mann  
Roberta A. Martin  
Eileen and Lee Mathias  
Mr. Steven G. Maurer  
Marina McDougall and Zane Vella  
Kate Mellinger and Erich Falke  
Lori and James Murphy  
The Nelson S. Talbott Foundation  
Dr. Paul Nemeth and Dr. Jean Flood  
Deana and Eric Nordstrom  
Joanne and Joseph Noreika  
Our House Montessori  
Cynthia and Robert Pizziketti  
Laura Raab and Donald Krapf  
Raymond James Charitable Endowment Fund  
Sarah and David Reiner  
Mrs. Shirley Reiner  
James E. Renken  
Kristin and Matthew Roth  
Julie Stone and Michael Rueter  
Kathleen and Frank Seidman  
Mr. and Mrs. Corey R. Smith  
Richard A. Speizman and Faith A. Horowitz  
The Speizman-Horowitz Fund  
Stephen Starnes and Roseanne DiSanto  
Kirk J. Thieroff  
Upsalquitch Fund  
Trina Vaux and Hugh McCauley  
Dr. and Mrs. F. Todd Wetzel  
Joan and Ralph Widner  
David Wilmerding  
Karen and David Wright

\$175 to \$499

Anonymous (4)  
Joann and Frederick Ackler  
Elizabeth Adams and Elijah Adams  
Galit Agmon and Guy Ambar  
Alyson N. Owen-Craig M. Oliner  
Family Charitable Fund  
Christopher Amado and Jessy Morveli-Amado  
Nancy and Bernard Anderson  
Michaela and David Anderson  
Dr. Elizabeth Bales and Mr. Michael Dell'Angelo  
Nathan Balsham  
Marcella Barnhart and David Knoblock  
Pamela and Kenneth Barroway  
Gregory W. Batker and Suet T. Lim  
Roberta Batorsky and Carl Hemmingsen  
Ms. Jane N. Beatty  
Deborah and Douglas Bellew  
Michael Benasutti and Timothy Benasutti  
Drs. Gudrun and T. Peter Bennett  
Jennifer and Mark Berlinger  
Dr. Richard Bierregaard  
Deborah and Gary Bingham  
Joanna Bisgaier  
Rosalie Blessing and Miguel Tamayo  
Andrew Blittman and Linda Zaleski  
Jessica Blum and Neil Schoenberg  
Emily and Andrew Bonfiglio  
Gina and Lawrence Brent  
Ina Brolis and Stefanie Tocco  
Kristal Brounce-Horn and Robert Horn  
Karen and Robert Bruhin  
Lauren Cain and Melissa Knox  
Morganne and Thomas Castiglione  
Lena Champlin  
Christopher B. Chandor  
Gordon Chaplin and Sarah Teale  
Sarah Sperry and Amy Chiappine  
Janine Chupa and Uli Frevert  
Anita and Theodore Clattenburg  
Dr. Marjorie Curtis-Cohen and  
Dr. Marc C. Cohen  
Deborah and Robert Cohen  
Mr. Arthur M. Cohn  
Courtney Collins-Shapiro and Janet Ligon  
Michael Conway and Laura Vanderkam



Matthew Courtin and Laura Geller  
Katheryn Cousins-Gershenson and  
    Carl Gershenson  
Virginia and Donald Crawford  
Diane Crowley  
Vibiana and Nick Cvetkovic  
Patti Daley and Jacqueline Daley  
Susan Dando and Alexandre Costabile  
Dr. and Mrs. James L. Dannenberg  
Sigrid and Edward DaVeiga  
Mr. and Mrs. Charles H. Davis  
Rose and Francis Day  
Marianne and Chris Deczynski  
Julia and Daniel DeJoseph  
Dr. Joan S. Di Palma and Ms. Dori Di Palma  
Tobey and Mark Dichter  
Laura and Mark Dingfield  
Sophie B. Donaghy  
Lauren and Ryan Donnon  
Margaret and William Donohue  
Lindsay and Jerry Dougherty  
Tracy and Sean Dowling  
Mrs. Phoebe A. Driscoll  
Laurie Drummond and Kelley Wheat  
Leilei Duan and Jianhua Cao  
Mr. Ned DuBeck  
Diana and Phil Dumont  
Jonathan Dunsay and Caroline Tiger  
Melissa and Lindsey Dymond  
Earl and Helen Poole Memorial Fund  
Mr. Jeffrey E. Edelman  
Jean and Terence Edwards  
Drs. Howard J. Eisen and Judith E. Wolf  
Elizabeth and Robert Lukens Charitable Fund  
Roberta and Saul Epstein  
Mr. and Mrs. Robert L. Ervin  
Mrs. Alexandra Estey  
Lee Faden and Sharon Marcus  
Anne Faiella  
Lillian and Sean Falese

♦ Deceased

Dr. Jay L. Federman and Ms. Sylvia R. Beck  
Deborah and Harry Feigel  
Lindsay Fiesthumel and Tristan Michaleski  
Albert Filemyr  
Ms. Ruth E. Fine  
Jae and Saul Fisher  
Lisa Fittipaldi and Lori Zimmaro  
Candice and Jason Fleischood  
Phyllis Florio and Joseph Viola  
Anita Foertsch  
Katie Fogarty and Kyle Kolos  
Richard Foltz  
Leslie Forberger and Emily Stott  
Jane Fortin  
Mr. and Mrs. Frank B. Foster III  
Jessica Fowler and Allen Berger  
Frank and Terry Foster Family Fund  
Drs. Susan and Kenneth Frank  
Nancy Frederick  
Susan and Peter Gagliardi  
Sallie Garfield and Nathaniel Parks  
Mr. and Mrs. A. Cope Garrett  
The Garvin Family  
Evalyn and Jon Gelhaus  
Dr. Eric Gibson and Ms. Jeannie Pearce  
Janice Gibson  
Nicole and Brinder Gill  
Colleen Glynn and Jeremiah Giampa  
Howard Goldfine and  
    Norah Johnston-Goldfine  
Howard Green and Julia Williams  
Green/Williams Donations Fund  
Greta and Alan Greenberger  
Alex Grieco  
Barbara and Michael Grippi  
Marybeth and Robert Haas  
Rekha and Jonathan Hagen  
Kelly Haggerty and Travis Wilson  
William Hamilton  
Dr. Joshua Harrington and Ms. Kirin Uzar  
Mary Alice Hartsock and Nathaniel Bordy  
Dr. Christine Waanders and Mr. Ivan Haskell  
Mary and Robert Hawkins  
Wilda Hayward and Carolyn Jackson  
Elizabeth A. Hazany  
Crissy and Joel Helmke

Barbara Hentz and Rebecca Davis  
Herbert and Gayl Henze  
Jose Hernandez and Amy Kulp  
Lauren and William Hickman  
The Hill at Whitemarsh  
Mrs. Lynn Hitschler  
Mary Hogue  
Elizabeth and Jake Hollinger  
Suzanna and Christopher Hosein  
Laura and Reginald Huc  
Maria Ironside and Benjamin Goldstein  
Drs. Jessica and Robert Janiczek  
Patricia Jankauskas and Emilio Biello  
Caleb Jaquith  
Maura and Neil Jennings  
Kate and Julian Jiggins  
Francine Jonas and Rebecca Ntab  
Ricardo Jones and Malina Small  
Valerie and David Jones  
Eldridge T. Katzenbach Jr.  
Kiley and Graham Kelly  
Yvonne Kita and Robert Little  
Robert Klotz and Lille Foster  
Kia Knight and Eric Wilcox  
Dawn and Karyn Kollonige  
Dr. and Mrs. Richard C. Kovach  
Jessica Kulick  
Gerald Kuncio and Tracy Yeomans  
Ms. Lois Kuter  
Paige and Anthony Lacatena  
Lauren and Timothy Lambie-Hanson  
Kimberly Langston and James Perkins  
James Latta and Gwyn Latta  
Robert Lawler and Thomas Lawler  
Bonnie and Gary Leadbetter  
Mardys and Dennis Leeper  
Gordon Leggett and Madeline Miller  
Diane and Eric Leichter  
Mr. Carter R. Leidy  
Stephanie and Corneliu Lemnei  
Kristin and Khal Leslie  
Trish and Marc Lilley  
Ellen Linsen and Lauren Eschborn  
Wei Liu and Wang Lei  
Dr. Robert Locke and Mrs. Sarah Thorne-Locke  
April Logan and Gary Fox

Dr. Catherine Loh and Dr. Jonathan Loeb  
Donna and John Lohn  
Jennifer and William Lordan  
Minnie and Johnny Lott  
Julia Louis and Jeremiah Joyce  
Mr. Preston Luitweiler  
Bob and Betsy Lukens  
Betsy and Wendy Luo  
Mr. Chris J. Lynagh  
Robert Lynch and Brian Lynch  
Leanne and William Lyons  
Paula and James MacCombie  
John Madziyre and Veronica Waldron  
Mary Ellen Markovcy  
Irene and Bruce Marks  
Patrice Maro  
Elizabeth Masciotti and Alexander Penna  
Mason Family Charitable Account  
Charles E. Mason  
Colleen and Jonathan Mayer  
K. Tristan Mayer and Amy R. Mayer  
Marie Mayer and Amanda Friedrich  
Marnie and Matthew McAleer  
Dr. Maura McCarthy and Dr. Joseph Barber  
Debra McCarty and Richard Stasiowski  
Lindsey McClennen and Alfredo Silva  
Betsy and James McClure  
Charlotte and Michael McCracken  
Kathy and Charles McCulley  
Marge McEntee and George Ahern  
Diane and Paul McGonigle  
Colleen McMahon and Alison Pironti  
Megan and Bartholomew McQuoid  
Gemma Mears and Jon Mears  
Ms. Elizabeth Mednick  
Dr. Tara Mendola and Dr. Ari Friedman  
Ashley Merritt  
Jean Merritt  
Alex Miller  
Marianna and Frank Mirabello  
Mr. and Mrs. Chi Mo  
Laraine and John Mocenigo  
Delores and Adam Montgomery  
Chris Morrell and Rebecca Levine  
Eileen and Patrick Murphy  
Rashid Najjar and Nadia Gerban

Qiong Nan and Tuo Zhao  
Mrs. Galen Newsum  
Mr. and Mrs. Blake E. Nicholson III  
Emily Northington  
Caitlin and William Novelli  
Sarah O'Shaughnessy  
Patricia O'Connor  
Sara Oetinger and Robert Gabel  
Maureen and Patrick O'Hara  
James Olstein and Rebecca Ins  
Alyson Owen and Craig Oliner  
Matthew Paoli and Molly Baum  
Dr. Shefali Parikh and Dr. Parag Desai  
Margaret Parlante  
Jeannine and André Payne  
Dorothy Perkins and Herman Baron  
Joshua Perlman and Liang Chen  
Matthew Peters and Sarah Campagno  
Selina and Joe Petraccio  
Kristie and Chris Pietruszynski  
Dr. Taylor Pomeranz and Mr. Daniel Arnold  
Charles Poole  
Joseph Poole  
Kathleen Popper  
Susan Powell and Jon Ellis  
Ms. Katherine E. Preston  
Valerie and Carlo Profico  
Julie Purcell and Allenzia McCann  
David Puryear  
Kathryn and Matthew Quigg  
Drs. Glen and Alyson Quigley  
Timothy Quigley and Margaret Bicking  
Jennifer and Conrad Ramirez  
Janice Rastelli Minor  
Christine and Todd Reckamp  
David Reedy  
Thom Reynolds and Samantha Simpson  
Caroline and Edward Rice  
Andrea and Steven Rice  
Peg and Bob Ridgely  
Nick Romano and Marci Diciano  
Suzanne Roth  
Joseph Rucker and Jane Boyd  
Danielle and Joseph Rudic  
Doris Rule  
Tracy Russo and Mitchell Kelly

Dr. Sung-Hae Cho and Mr. Erich Sachse  
Sandy and Honor Sage  
Sylvia and Benjamin Sanfilippo-Cohn  
Abbie and Jorge Santana  
Jennifer Skirkanich and Craig Santoro  
Eileen and Sara Satullo  
Mr. Steven E. Saunders  
Richard Scache and Marina Zeccardi  
Maynard Scales  
Kathleen and Frederick Schea  
Sarah and Jason Schein  
Molly and Berle Schiller  
Steven Schmelz and Madeleine Darling  
Dr. Richard R. Schmidt and  
    Mrs. Dulcie B. Schmidt  
Terri Schmitt  
Darren and Amada Schneider  
Doris S. Schoener  
Jonathan Schoenfeld and Amy Concannon  
Dr. Thomas Tauber and Ms. Grace Schuler  
Anne and Fritz Schumann  
Dr. Janet Schwartz and Mr. Jeffrey S. Saltz  
Brandy and Kevin Scott  
Dr. Monique Scott  
Mrs. Lucy Bell N. Sellers  
Nicole and Jamaal Shaban  
Mr. and Mrs. Joseph M. Shaeffer  
Karen and Matthew Shanahan  
Ruth Sheets and Bryanna Pellecchio  
Douglas Shelton  
Janet and Jordana Silver  
Mrs. Henrietta Slap♦  
Bonnie Slobodien and Sarah Slobodien Dovere  
Kristan and Jeffery Slotterback  
Genevieve and Louis Smith  
Pattie Smith  
Kristyn and Timothy Souder  
Wilson Sproehnle III  
Mr. Nicholas J. Staffieri Esq.  
Deanna and A.J. Stagliano  
Susan Stanley and Laurel Weaver  
Laura and Robert Steere  
Mr. and Mrs. Morris W. Stroud  
Alex Tablin-Wolf and Cat Nguyen  
Jihye Tahk and Matthew Thomas  
Adrienne and Dennis Terico





Elizabeth Terry and Brian Eves  
Roger L. Thomas  
Joan and William Thomas  
Marilyn Torres and Leopold Jusino  
Mr. David Tristano and Dr. Janine Remillard  
Andrea and Alfred Trubin  
Diane and Edward Tryon  
Dr. Catherine Turner and Dr. Gordon Witty  
Jane and Jack Turner  
Fred Turoff and Diane Eigner  
United Way of Greater Philadelphia  
and Southern New Jersey  
Christiana and Savuth Uy  
Monique and Johan Van Niekerk  
Ms. Mary J. Vaux  
Jami and Matthew Vibbert  
Sharon Walker and Franklin Kline  
Laurel Weaver  
George Weeks and Zachary Weeks  
Paula and John Wehmiller  
Carol and Daniel Weil  
Mark Weiss and Scott Broer  
Margaret and Richard Weyler  
Dr. Paul Wileyto and Ms. Carol Krawczyk  
Julie and Thomas Wilgus  
Rebecca and John Wilkinson  
Theresa Willer-Grinkewicz and  
Donna Widmaier  
Brenda and Forrest Williams  
George Williams and Jessica Williams  
Dr. David Wilson and Mrs. Shelley Wilson  
Loretta and Tom Witt  
Meghan and Brian Wood  
Richard Woosnam and Diane Dalto Woosnam  
Kimberley Anne and Charles Eric Wright  
Dr. Sridhara Yaddanapudi and Dr. Anju Yadav  
Patricia Yocum  
Svetlana and Daniel Zantzing  
Chris Zanzarella and Lisa Zanzarella  
Rich Zarembo and Alison Barnes  
Dan Zhang and Peng Hu

♦ Deceased



Diorama Restoration Gifts

Thanks to a generous grant from the E. Rhodes and Leona B. Carpenter Foundation, the Academy launched a matching gift challenge to raised \$65,000 in support of the Wild Yak Diorama. Thanks to the generosity of our donors, we met the challenge and unlocked our grant. We recognize the following supporters of the Diorama Renovation Project between July 1, 2021 and June 30, 2022. Contributions to the project will not only support the renovation of the Wild Yak, but also the Kiang and Tiger dioramas in Asia Hall to take place in 2023 and 2024.

Anonymous (4)	Jane I. Earle	James Latta and Gwyn Latta	Tracy Russo and Mitchell Kelly
Joann and Frederick Ackler	Anne Faiella	Maxine S. Lewis	Faith and Frederick Sandstrom
Joseph F. Baker and William Shaw Mulherin	Lillian and Sean Falese	Mr. William A. Loeb	Eileen and Sara Satullo
Marcella Barnhart and David Knoblock	Lindsay Fiesthumel and Tristan Michaleski	LTM Family Foundation	Terri Schmitt
Pamela and Kenneth Barroway	Jae and Saul Fisher	Dorcas MacClintock	Randy and David Schrager
Gregory W. Batker and Suet T. Lim	Marilyn Fishman and James MacElderry	Katie and Joey Marquardt	Schwab Charitable
Drs. Gudrun and T. Peter Bennett	Michael Gallagher	Elizabeth Maxim	Joanne and Bruce Shanzer
Michael Bradway	Julie and Mitch Gerstein	Linda and Tom McCarthy	Cathy and Bill Siegl
Winnie and John Branton	Stephen Glaudel and Loretta Varallo	Marge McEntee and George Ahern	Carol and Art Silverman
Donna and Joseph Bridy	John and Michele Goliszewski	Mrs. Elizabeth P. McLean	Elizabeth Skendzic
Alyssa Browning	Catherine Gorgol	Elizabeth R. McLean	Pattie Smith
Meghan Bucci	Alex Grieco	Ms. Sandra Lee McLean	Stacy and Jeremiah Smithson
The Buck Family Fund	Mary and George Gruber	Alex Miller	The Sparvey Fund
Elinor Hosterman Buck and James M. Buck III	Mr. Joseph Gruber	Mr. Allen J. Model and Dr. Roberta E. Gausas	Oona Sperr
Nancie and Theodore Burkett	Sandra and Karl Hartmann	Ms. Alexandra U. Moede	Mrs. Joly W. Stewart
Dr. John S. Carson	Ellen Harvey and Tad G. Sperry	Daniel Moerman and Claudine Farrand	Mr. and Mrs. Morris W. Stroud
Erin Chapman	Dr. Christine Waanders and Mr. Ivan Haskell	Fred Mullison	The Stumm Family
Marianne Cinaglia	Lisa K. Hastings	Mr. John Aloysius Nark	Mr. James Suit and Ms. Danielle Ramos
Amy and R. Putnam Coes III	Herbert and Gayl Henze	National Philanthropic Trust	Kathy and Frederick Taht
Laura and Brian Connelly	Katherine and Fredrik Hiebert	Anne O'Brien	Roger L. Thomas
Mr. and Mrs. Peter D. Cook	Leo Janas and Susan Petrone	Maureen and Patrick O'Hara	Larry Tornetta
Polly and Ted Coxe	Dean Jerrehian	Barbara Oldenhoff	Diane and Edward Tryon
Virginia and Donald Crawford	Ricardo Jones and Malina Small	OOS Charitable Corporation	Susan Vincent and William Marano
Walter Crimm	Sara Jorgensen	Mr. and Mrs. Robert M. Peck	Laurel Weaver
Suzanne and Charles W. Cruitt	Ms. Bernice Kaplan	Cynthia and Robert Pizziketti	Joan and Ralph Widner
Katrina Daly	The Keer Family	Bruce Pollock	Wong Giving Fund
Jacob Daniel	Barbara C. and Frank S. Keith	Jennifer B. Quick	Stephen and Catherine Wong
Abbie and Patrick Dean	Muriel Kirkpatrick	Drs. Glen and Alyson Quigley	Svetlana and Daniel Zantzing
Megan and Todd Delevan	Kathleen Klee	Marlene and Joseph Ramsay	Rich Zarembo and Alison Barnes
Dr. Joan S. Di Palma and Ms. Dori Di Palma	Deborah Kotzin and Jerome Verlin	James E. Renken	
Kathleen DiMenna	Sally Kuder	Andrea and Steven Rice	
Lei-Lynne Doo-Horvick and	Dr. Faith Blersch Kuehn	Jean Riling and Jacob Rivera	
Sarah Horvick-McCarthy	Ivy Lane	Caroline B. Rogers	
Joanne Douglas	Laura Lane and David DeVoe	Kristin and Matthew Roth	
Bernadette and Bill Druding	Tammy and Dennis Lasiter	Doris Rule	



Honorary Gifts

Perry Benson Jr., *in honor of Robert M. Peck*  
Polly and Ted Coxe, *in honor of George W. Gephart*  
Mrs. Edward V. Dillon, *in honor of Ted Daeschler*  
Mr. and Mrs. A. Cope Garrett, *in honor of Nate Rice and Julie Reich*  
Jacqui and Dave Griffith, *in honor of Latasha Harling and WINS 40th*  
Lee Hackeling, *in honor of Thomas Dolan V*  
Ellen Harvey and Tad G. Sperry, *in honor of Pierce and Cindy Archer*  
Ellen Harvey and Tad G. Sperry, *in honor of George and Pooh Gephart*  
The Jacqueline M. Griffith Fund, *in honor of Latasha Harling and WINS 40th*  
Yardly and Scott Jenkins, *in honor of Robert M. Peck*  
Debbie Linthorst, *in honor of Jacque Genovesi's birthday*  
Kimberly Pineda, *in honor of Jacque Genovesi's birthday*  
Linda Smith, *in honor of Joanna Littleton*  
Dr. and Mrs. Marc Zimmerman, *in honor of Marc Gold*

Memorial Gifts

Anonymous, *in memory of Dr. Ruth Patrick*  
Robert W. Ellis, *in memory of Frances S. Ellis and Albert J. Visco*  
Ms. Mary L. Felley, *in memory of June Felley*  
Dorothy M. Hurt, *in memory of Bill Reese*  
Barbara C. and Frank S. Keith, *in memory of Albert J. Visco*  
Carol and Art Silverman, *in memory of Cheryl Beth Silverman*

In Memory of Thomas Dolan IV

Anonymous  
Mr. and Mrs. Robert L. Ervin  
Ms. Ruth E. Fine  
Harry C. Groome III  
Lee Hackeling  
The Hill at Whitemarsh  
Yardly and Scott Jenkins  
Ms. Sally R. Johnston  
Harvey S. Shipley Miller  
Anne and Baird Standish

In Memory of Cecily Darwin Littleton

Toby Gang  
Mary Jane P. Jann  
Joanna Littleton  
F.C. and B.E. Northrup  
Barbara and Michael O'Brien  
Mr. and Mrs. Robert M. Peck  
Phyllis Slutsky  
Linda Smith  
Lili and Xinzheng Wang

♦ Deceased



Academy Collaborators

Academy Collaborators are much more than members. Collaborators take an active role in our mission to understand the natural world and inspire everyone to care for it. Each level is named for one of Earth's vital ecosystems, to inspire curiosity and celebrate the remarkable collaborations that make life in these habitats possible. As the health of an ecosystem relies on an extraordinary network of diverse life-forms working together, the Academy relies on the collaboration of our partners, members and donors. We recognize the following Academy Collaborators for their generous unrestricted support of the Academy between July 1, 2021 and June 30, 2022. To learn more about becoming an Academy Collaborator, please contact our Individual Giving team at friends@ansp.org.

Coral Circle

Jacqui and Dave Griffith

Seagrass Circle

Amy Branch and Jeff Benoliel  
Lois and Julian Brodsky  
Mrs. Jane C. MacElree  
Diane and Seth McDowell  
Mr. Allen J. Model and Dr. Roberta E. Gausas  
Ms. Alexandra U. Moede  
Mrs. Jean Preston  
Mr. and Mrs. Gerald B. Rorer  
Susan Jane Brown and John Smith  
Mrs. Corinne J. Stahl  
Constance and Sankey Williams

Mangrove Circle

Mary and Peter Austen  
Jeffrey A. Beachell  
Dr. Erica Carpenter and Mr. Robert Carpenter  
Amy and R. Putnam Coes III  
Maureen Craig and Glenn Goldberg  
Abbie and Patrick Dean  
Patty and Rob Delany  
Ralph C. Eagle Jr., M.D.  
Suzanne and Mark Eveland  
Marilyn Fishman and James MacElderry  
Katy and Jason Friedland  
Sharon and Marc Gold  
Ellen Harvey and Tad G. Sperry  
Jun Huangpu and Xia Li  
Karen and Wayne Lattuca  
The Legnini Family  
Linda and Tom McCarthy  
Katie and Bill McNabb  
Edward A. Montgomery Jr.

Theresa and Ranney Moran  
Mr. and Mrs. Robert M. Peck  
Kathleen L. Pereles  
Mr. and Mrs. Matthew Pestronk  
Ron Mammen Philip and Reni Philip  
Mr. Herbert T. Rorer  
Judith Soltz and Richard Belas  
Mr. and Mrs. John Jeming Soroko  
Oona Sperr  
Mr. and Mrs. Michael Tucker  
Bob Victor and Alexandra Edsall

Salt Marsh Circle

Joseph F. Baker and William Shaw Mulherin  
Sheila and Myron Bassman  
Peter A. Benoliel and Willo Carey  
Evelyn and Brian Ford  
Ms. Elizabeth H. Gemmill  
Mrs. Penelope P. Harris  
Bonnie and Peter McCausland  
Mrs. Elizabeth P. McLean  
Jeanette Lerman-Neubauer and Joe Neubauer  
Barbara Oldenhoff  
Barbara and Michael Perilstein  
Gretchen and Jay Riley  
Dr. John P. Schmidt  
Suzanne and Robert Welsh

Rainforest Circle

Mr. and Mrs. John A. Affleck  
Dr. and Ms. Leigh J. Altadonna  
Ms. Ellen Anderson and Mr. Brantly Rudisill♦  
Mr. and Mrs. Pierce Archer  
Kathleen and John Berkowitz  
Julia and John Buonagurio  
Susan and R. Kent Cadwalader  
Jenny Rose and Gus Carey

Maria and Barry Craze  
Suzanne and Charles W. Cruitt  
Emily and Ted Daeschler  
Mrs. Nancy B. Davis  
Rodney D. Day III  
Sandra Drayer and  
The Honorable Calvin S. Drayer  
Jane I. Earle  
Barbara Edelstein  
Dr. Janice T. Gordon  
Anne and Matt Hamilton  
Jessie B. Hill  
Joan Nathan and Jim King  
Kevin and Jennifer Kowalick  
Kenneth Kulak and Katherine Hovde  
Mr. John T. Lehman  
Joanna McNeil Lewis  
Maxine S. Lewis  
Ms. Sandra Lee McLean  
Lisa and Jeff Miller  
Arthur E. Newbold IV  
C. R. "Chuck" Pennoni  
Rosalind Remer and James Green  
Sean Rhoads and Keri Fisher  
Joanne and Bruce Shanzer  
Jean and John Witmer  
Minturn T. Wright III

Meadow Circle

Anonymous  
Franny and Franny Abbott  
Ms. Sarah S. Alfadl  
Dr. Valerie A. Arkoosh and  
Mr. Jeffrey T. Harbison  
Mrs. Ellen Asplundh  
James and Janet Averill  
Amy and David Badler

Drs. Gudrun and T. Peter Bennett  
Drs. Robert and Marie Benz  
Kenneth S. Blackney and Robert R. Ditto  
Bill and Laura Buck  
Sheryl and Bill Bullitt  
Susan and Cummins Catherwood  
Cheryl and Radcliffe Cheston  
Mrs. Ruth M. Colket  
Mrs. Edward V. Dillon  
Thomas Dolan IV♦  
Dr. Gudrun Dauner and Mr. Derick Dreher  
Constance and Paul Dry  
Tom and Ellie Elkinton  
Peter A. Evans  
Ms. Mary L. Felley  
Ms. Helen H. Ford  
Mrs. Marilyn Forney  
Alexandria Garrity and Elizabeth McCampbell  
Mr. and Mrs. George W. Gephart Jr.  
Frank Gill and Sally Conyne  
Scott Goldman and Maryalice Cheney  
Mr. and Mrs. Richard Greenawalt  
Drs. Vivian and Mark Greenberg  
Barbara Hauptfuhrer  
Bruce Hauptfuhrer  
Mr. and Mrs. Peter H. Havens  
Dr. Gail W. Hearn  
Yardly and Scott Jenkins  
Nancy and Chris Kennedy  
Janet S. Klein  
The Lapham Family  
Courtney and Page Leidy  
Patricia and Raymond Major  
Jim and Joan Moore  
Martha H. and I. Wistar Morris III  
Ms. Diane L. Myer  
Joseph A. O'Connor Jr.



Joseph O'Hare and Wallace Beard  
Mr. and Mrs. Lanny R. Patten  
Cynthia and Robert Pizziketti  
Mr. and Mrs. George Putnam III  
Kathy Putnam  
Margaret and Tom Ralph  
Ann and Frank Reed  
Michael Reed and Yalta Gilmore-Reed  
Jennifer Merves Robbins and Brian Robbins  
Mrs. Harriet H. Robertson  
Mrs. Bonnie Rosenberg  
Andrea Rowe and Benjamin Stahl  
Julie Stone and Michael Rueter  
Mr. and Mrs. David A. Rusenko  
Jane and Scott Satterfield  
Dr. and Mrs. Alfred E. Schuyler  
Drs. Karen and Robert Sharrar  
Carol and Art Silverman  
Stephen Smith and Ellen Kurtz  
Sidney and Stewart Spahr  
Jamie Stewart  
Patricia Tyson Stroud  
John A. Terrill and Mary Jane Barrett  
Mrs. Susan Pepper Treadway  
Mr. and Mrs. Richard Tregerman  
Mr. and Mrs. James L. Van Alen  
Deborah Weil  
Signe Wilkinson and Jon Landau  
Mr. and Mrs. Peter Wilmerding  
Stephen and Catherine Wong  
Richard B. Worley and Leslie Anne Miller  
Catherine A. Worrall

Pinelands Club

Anonymous  
Joan and Richard Andren  
Nancy and Frederick Bissinger  
Barbara and Clarke Blynn  
Elinor Hosterman Buck and James M. Buck III  
Marie Carroll  
Joan and Joel Chinitz  
Nancy and Robert Cleveland

♦ Deceased

Barbara Cobb  
Carol and Richard Collier  
Rhoda and Michael Danziger  
Kitty and Bob DeMento  
Margaret Chew Dolan  
Natalie and Alan Eisen  
William J. Frezel  
Susan and Peter Gagliardi  
Julie and Mitch Gerstein  
Kara and John Goodchild  
Dr. Page Talbott and Mr. James E. Gould  
Tamar and Marshal Granor  
Mrs. Nancy G. Harris  
Alice and Peter Hausmann  
David J. Hellen and Dr. Margaret J. Godbey  
Lois V. Hill  
Dr. Lesley Ann Hughes

Mr. Pemberton Hutchinson  
Kyle Kernozek and Michele Dickey  
Dr. Egbert G. Leigh Jr.  
Mr. Thomas Lloyd  
John Makara and Kathy Patterson  
Ms. Robin L. Mann  
Mrs. Rose M. Marinaro  
Mr. Steven G. Maurer  
Marina McDougall and Zane Vella  
Kate Mellinger and Erich Falke  
Lori and James Murphy  
Deana and Eric Nordstrom  
Joanne and Joseph Noreika  
Laura Raab and Donald Krapf  
Marlene and Joseph Ramsay  
Sarah and David Reiner  
Mrs. Shirley Reiner

Kimberly and Joe Reynolds  
Bonnie Schorske  
Mr. and Mrs. Corey R. Smith  
Richard A. Speizman and Faith A. Horowitz  
Stephen Starnes and Roseanne DiSanto  
Trina Vaux and Hugh McCauley  
Dr. and Mrs. F. Todd Wetzel  
John Whitenight and Fred LaValley  
David Wilmerding  
Kimberley Anne and Charles Eric Wright  
Karen and David Wright

Headwaters Club

Anonymous (2)  
Nancy and Bernard Anderson  
Ms. Jane N. Beatty  
Jennifer and Mark Berlinger  
Dr. Richard Bierregaard  
Ina Brolis and Stefanie Tocco  
Kristal Brounce-Horn and Robert Horn  
Marie Brydges and Laura Cybulski  
Morganne and Thomas Castiglione  
Christopher B. Chandor  
Gordon Chaplin and Sarah Teale  
Mr. Arthur M. Cohn  
Michael Conway and Laura Vanderkam  
Susan Dando and Alexandre Costabile  
Dr. and Mrs. James L. Dannenberg  
Mr. and Mrs. Charles H. Davis  
L. Stuart Ditzen and Denise Cowie  
Mrs. Phoebe A. Driscoll  
Mr. Ned DuBeck  
Jonathan Dunsay and Caroline Tiger  
Mr. Jeffrey E. Edelman  
Jean and Terence Edwards  
Drs. Howard J. Eisen and Judith E. Wolf  
Roberta and Saul Epstein  
Mrs. Alexandra Estey  
Lee Faden and Sharon Marcus  
Dr. Jay L. Federman and Ms. Sylvia R. Beck  
Candice and Jason Fleischood  
Mr. and Mrs. Frank B. Foster III  
Drs. Susan and Kenneth Frank  
Nancy Frederick  
Mr. and Mrs. A. Cope Garrett  
The Garvin Family

Lisa Givner and Will Givner  
Howard Goldfine and  
Norah Johnston-Goldfine  
Howard Green and Julia Williams  
Greta and Alan Greenberger  
Tucker C. Gresh  
Dr. Joshua Harrington and Ms. Kirin Uzar  
Mary Alice Hartsock and Nathaniel Bordy  
Crissy and Joel Helmke  
Herbert and Gayl Henze  
Katherine and Fredrik Hiebert  
Laura and Reginald Huc  
Maura and Neil Jennings  
Kate and Julian Jiggins  
Dr. and Mrs. Richard C. Kovach  
Rebecca Kriss and Nicholas Stanley  
Ms. Lois Kuter  
Robert Lawler and Thomas Lawler  
Gordon Leggett and Madeline Miller  
Mr. Carter R. Leidy  
Dr. Robert Locke and Mrs. Sarah Thorne-Locke  
Mr. William A. Loeb  
Dr. Catherine Loh and Dr. Jonathan Loeb  
Bob and Betsy Lukens  
Paula and James MacCombie  
Irene and Bruce Marks  
Roberta A. Martin  
William Matulewicz and Elizabeth Mataset  
K. Tristan Mayer and Amy R. Mayer  
Marie Mayer and Amanda Friedrich  
Debra McCarty and Richard Stasiorowski  
Kathy and Charles McCulley  
Diane and Paul McGonigle  
Daryl Mecklem and Kathy Howard  
Ms. Elizabeth Mednick  
Dr. Tara Mendola and Dr. Ari Friedman  
Ashley Merritt  
Alex Miller  
Marianna and Frank Mirabello  
Mr. and Mrs. Chi Mo  
Delores and Adam Montgomery  
Heather and John Murphy  
Paul Nestor and Kathy Jones-Nestor  
Alyson Owen and Craig Olinier  
Dr. Shefali Parikh and Dr. Parag Desai  
Jeannine and André Payne

Ms. Katherine E. Preston  
James E. Renken  
Peg and Bob Ridgely  
Suzanne Roth  
Danielle and Joseph Rudic  
Tracy Russo and Mitchell Kelly  
Sandy and Honor Sage  
Mr. Steven E. Saunders  
Terri Schmitt  
Darren and Amada Schneider  
Jonathan Schoenfeld and Amy Concannon  
Christina and Adam Schoon  
Anne and Fritz Schumann  
Brandy and Kevin Scott  
Dr. Monique Scott  
Kathleen and Frank Seidman  
Mrs. Lucy Bell N. Sellers  
Mr. and Mrs. Joseph M. Shaeffer  
Susan and Paul Shaman  
Mrs. Henrietta Slap♦  
Kristan and Jeffery Slotterback  
Mr. Nicholas J. Staffieri Esq.  
Deanna and A.J. Stagliano  
Laura and Robert Steere  
Kirk J. Thieroff  
Joan and William Thomas  
Andrea and Alfred Trubin  
Ms. Mary J. Vaux  
Jami and Matthew Vibbert  
George Weeks and Zachary Weeks  
Carol and Daniel Weil  
Joan and Ralph Widner  
Dr. Paul Wileyto and Ms. Carol Krawczyk  
Theresa Willer-Grinkewicz and  
Donna Widmaier  
Dr. David Wilson and Mrs. Shelley Wilson  
Carol and John Winkler  
Loretta and Tom Witt  
Richard Woosnam and Diane Dalto Woosnam

Estate Gifts

Estate of Beverly Hattersley  
Estate of Marilyn Patricia Mans  
Estate of Robert F. McLaughlin  
Estate of Edward A. Pereles



1812 Society Members

For many years, the Academy's most dedicated supporters have invested in our future by including the Academy in their estate plans. The Academy's Board of Trustees established the 1812 Society in honor of our most forward-thinking supporters whose contributions have sustained the Academy's growth for the past two centuries. To learn more about planned giving, please contact our Office of Institutional Advancement at 215-299-1182 or friends@ansp.org.

Anonymous (2)♦  
Anonymous  
Joseph F. Baker  
Sheila and Myron Bassman  
Vivian K. Blank♦  
Jean G. Bodine♦  
Dr. John S. Carson  
Joan and Joel Chinitz  
Donald Cleaver♦  
Mr. Luther A. Clement♦  
Walter Coley♦  
Amy and George Dick  
Lenora and Brooke Dolan  
Margaret Chew Dolan  
Thomas Dolan IV♦  
Thomas Dolan V  
Jane I. Earle  
Robert W. Ellis  
Lin Floyd  
Drs. Barbara♦ and Len Frank  
Julia W. Frick♦  
Mr. and Mrs. George W. Gephart Jr.  
Frank Gill and Sally Conyne  
Mrs. S. Page Hartley♦

Cynthia and Martin Heckscher  
Lois V. Hill  
Mr. Edward A. Markart Jr.  
Ms. Jacqueline Markart  
Mrs. Elizabeth P. McLean  
Daniel Moerman and Claudine Farrand  
Mrs. Elizabeth P. Petit  
Jean and Seymour♦ S. Preston III  
Sarah and Philip Price Jr.  
Mr. Francis Rasmus  
Ann and Frank Reed  
Sean Rhoads and Keri Fisher  
Peg and Bob Ridgely  
Dr. Robert♦ and Mrs. Harriet H. Robertson  
Phyllis and Gary Rosenberg  
Mr. and Mrs. Nicholas Ruggeri  
Dr. John P. Schmidt  
Pamela and Philippe Serra  
Ivy Silver and Steven Leshner  
Carol and Art Silverman  
Patricia Tyson Stroud  
Minturn T. Wright III



Named Endowment Funds

Endowment funds provide a source of sustainable support for a variety of Academy initiatives, from postdoctoral research to our annual lecture series. If you are interested in making a gift to a named endowment or establishing one in your name, please contact the Office of Institutional Advancement at 215-299-1182 or email friends@ansp.org.

- 2012 Gallagher Fellow
- Academy-General Endowment
- Academy-General Endow-Temp Rest
- Albert Earl Gilbert Endowment
- The Albert M. Greenfield Technology Upgrade Endowment
- Annual Fund Endowment
- Anonymous Discretionary Fund
- Anonymous Strategic Initiatives Endowment
- Archives-Trogon Collection
- Board Reserves
- Böhlke Memorial Endowment
- Botany Curator Endowment
- Botany General Endowment
- Botany Schuyler Internship Endowment Fund
- Brooke Dolan Archivist Endowment
- Carol Spawn Endowment Fund
- Center for Systematic Biology and Evolution Endowment
- Chair of Environmental Initiatives Endowment
- Chaplin Chair of Ichthyology
- Charlotte C. Stokes Art Collection Endowment
- Cheryl Beth Silverman Memorial Fund
- The Dolan Initiative for Innovative Water Research
- The Don and Virginia Eckleberry Endowment for Wildlife Art
- Dr. Charles Hodge IV Memorial Endowment
- Education Endowment
- Elizabeth and James Abraham Garfield Rehn Endowment Fund

♦ Deceased

- Entomology Endowment
- Estuarian Research Center Endowment
- Exhibits Endowment
- Fellow of the Academy Chair Endowment
- Florence R. Foerderer Endowment Fund
- Frank and Ruth Patrick Endowment Fund
- Grace Tees Herbarium Maintenance Fund
- Hamilton Morris Endowment Fund
- Hattersley Family Foundation Collections Care Upgrade Fund
- Hayden Memorial Geological Fund
- Hazel and H. Radclyffe Roberts Fund
- Henry A. Pilsbry Chair of Malacology
- Horace and Marie Richards Fund
- Ichthyology Endowment
- Invertebrate Paleontology Endowment
- Jane and John Bales Endowed Fund
- Jessup-McHenry Fund
- Joe Cadbury Scholarships Fund
- John and Marjorie Foster Fund for Ornithology
- John J. and Anna H. Gallagher Fellowship
- Johnson Water Research Endowment
- Joseph Leidy Memorial Fund
- Leidy Sculpture Preservation Fund
- Library Acquisition
- Library Technology Fund
- M. Patricia Mans WINS Internship Endowment
- Macaleer Ornithology Expedition Fund
- Malacology Endowment
- Martha Hamilton and I. Wistar Morris III Executive Director of the Library and Archives Endowment
- Maurice Heckscher Endowment Fund for Ornithology
- McLean Acquisition Fund
- The McLean Library and Archives Directorship Endowed Fund
- Meyer de Schauensee Endowment Fund
- Mildred Eckert Book Fund
- Mineral Sale Fund Endowment
- Mineralogy Endowment
- Morgan Hebard Fund
- Nolan Binding Fund
- Ornithology Endowment
- Ornithology-Operating Endowment

- Patrick Center for Environmental Research Endowment
- Richard Hopper Day Memorial Fund
- The Robert and Happy Robertson Endowed Fund
- Roberts Fund EN
- Ruth Patrick Chair in Environmental Science
- Schuyler Herbarium Internship Endowment Fund
- Science Publications Endowment
- The Seymour S. Preston III Endowed Fund
- The Sherry E. Weiss Fund for Outside In
- Theodore J. Cohn Endowment
- Vertebrate Paleontology Special Fund
- Vertebrate Zoology Fund
- VIREO Endowment
- The William L. McLean III Endowment Fellowship Fund
- Young People's Explorer Series

Matching Gift Organizations

- Benevity, Inc.
- The Blackbaud Giving Fund
- Charities Aid Foundation of America C/O CyberGrants
- Comcast NBCUniversal
- Merck Partnership for Giving
- Schwab Charitable
- The Veritable, LP Fund
- William Penn Foundation
- Willis Towers Watson Matching Gifts



Government and Research Grants

- Barnegat Bay National Estuary Program
- The Barnes Museum
- Bishop Museum
- Carnegie Mellon University
- Chesapeake Conservancy Inc.
- Darby Creek Valley Association
- Delaware River Basin Commission
- Elkhorn Slough Foundation
- General Dynamics Information Technology, Inc.
- Institute of Museum and Library Services
- Lower Neches Valley Authority
- The Nature Conservancy
- National Fish and Wildlife Foundation
- National Institute of General Medical Sciences at the National Institute of Health
- National Park Service
- National Science Foundation
- Natural Lands Trust
- New Jersey Sea Grant Consortium
- The New York Botanical Garden
- Open Space Institute Land Trust
- Pennsylvania Department of Environmental Protection
- Partnership for the Delaware Estuary
- Pennsylvania Historical and Museum Commission
- PEW Center for Arts and Heritage
- Rutgers University
- Small Business Administration
- Strategic Environmental Research and Development Program (Department of Defense)
- Stroud Water Research Center
- University of Montana
- University of Pennsylvania
- University of Southern Mississippi
- University of Vermont
- Upstream Alliance
- United States Department of Environmental Protection Agency
- William Penn Foundation
- Willistown Conservation Trust

Gifts to the Library and Collections

- Elana Benamy and Ray Scheinfeld
- Drs. Susan and Kenneth Frank
- Dorothy M. Hurt
- The Independence Seaport Museum
- Wendy Jenigen
- Jim Lish
- Larry McQueen
- Gamil N. Soliman
- Dr. and Mrs. James Wheeler

Gifts in Kind

- Elliott Rosenberg Donor Advised Fund of the Jewish Community Foundation, Inc.
- George W. Luther
- Ann and Martin Avery Snyder
- Keith S. Thomson
- Mrs. Carole Chew Williams Green



## Dear Friends,

As you reviewed our annual report, and absorbed the selected stories of our year, we hope you were left with a sense of the dedication, commitment and excitement that courses through the Academy, as well as an appreciation for the significant and growing impact this remarkable institution continues to have around the world.

In showcasing the extraordinary achievements of Professor Otte, we hope that our report conveyed the outsized influence of the Academy's Center for Systematic Biology and Evolution as it advances global understanding of the natural world.

In celebrating 75 years of the Patrick Center for Environmental Research, we hope you were struck by its legacy of innovation as well as the role it continues to play in building resilient communities through its world-class research and science-based advocacy.

In highlighting Black Birders Week, we hope that the Academy's deep commitment to becoming an institution that is of, by and for *all* those it serves shone through, as it continues to co-create powerful programs that democratize science and build a truly inclusive movement of environmentally engaged communities for a healthy, sustainable and equitable planet.

In outlining the successes of Water Year, we hope you were excited by the pioneering ways in which the Academy is championing new modes of science communication, devising fresh approaches to campus engagement and implementing compelling initiatives that create awareness, build understanding and, crucially, inspire action.

And finally, by introducing The Environmental Collaboratory, we hope that the Academy's ambition to innovate participatory research, drive community engagement and unlock the rich potential of its relationship with Drexel University is one that inspired you as much as it does all of us.

With our world-class scientists, educators and staff supported by an ever-strengthening leadership team, 2022 proved to be an outstanding year. But it wouldn't have been possible without you — our dedicated donors, members, visitors, volunteers and supporters.

Thank you for investing in the Academy and for helping us to better understand the natural world and inspire *everyone* to care for it.



A white line-art signature of Scott Cooper on a dark teal background.

Scott Cooper  
President and CEO



A white line-art signature of David E. Griffith on a dark teal background.

David E. Griffith  
Chair, Board of Trustees



**WRITER & EDITOR: BRIGETTE BROWN**

**DESIGN: AGILECAT**

**PHOTOGRAPHY: RAMON TORRES**

*(unless noted below)*

Cover: Anwar Abdul-Qawi; Pg. 8, 39, 42: Shira Yudkoff Photography;  
Pg. 7, 11: Watercolors by Dan Otte; Pg. 11: Jon Gelhaus/ANS;  
Pg. 12: Greg Cowper/ANS; Pg. 15: Olivia Liu/Upstream Alliance;  
Pg. 17, 18: Roger Thomas/ANS, Joey Heiczinger/ANS; Pg. 19–24:  
Bird photography by Anwar Abdul-Qawi; Pg. 30: Kate Leibbrand;  
Pg. 33: Liz Phillips; Pg. 34: Paula Rabinowitz; Pg. 38: Prototype  
photo by Chelsea James and Devin Taylor; Pg. 41: Markus Spiske/  
Unsplash; Pg. 47, 61: Harriet Stewart Miner, *Orchids: The Royal  
Family of Plants* (Boston: Lee and Shepard; 1885); Pg. 50, 51,  
59: *Microsculpture: The insect portraits of Levon Biss*. From the  
collections of the Oxford University Museum of Natural History;  
Pg. 65: Bird photography by Anwar Abdul-Qawi







*Founded in 1812, the Academy of Natural Sciences of Drexel University is a leading natural history museum dedicated to understanding the natural world and inspiring everyone to care for it.*

**A FORCE FOR NATURE®**

---

*A proud affiliate of*

**Drexel**  
UNIVERSITY