

ANNUAL REPORT  
2022-2024



THE ACADEMY OF  
NATURAL SCIENCES  
OF DREXEL UNIVERSITY







ANNUAL REPORT 2022-2024	PAGE
Letter from the President	4
Our Mission	6
Academy Research	7
Experiential Learning	21
Innovation	31
WINS 40th Anniversary	43
Board of Trustees	45
Statement of Activities	46
Donors	49
Letter from the Chair	60





## *Dear Friends,*

Over a decade ago, the Academy of Natural Sciences formed a historic affiliation with Drexel University. This groundbreaking partnership has strengthened the Academy's mission to understand the natural world and inspire everyone to care for it. This year's annual report highlights how our collaboration manifests across the Academy, on Drexel's campus and throughout the city.

Among the many stories we highlight, you will learn how our ornithologists and Drexel students are uncovering crucial insights into the California Condor's near disappearance through parasite DNA analysis. You will discover how Academy scientists have developed a revolutionary virtual microscope that Drexel students use to examine diatoms with unprecedented clarity. And you will explore how the Academy is partnering with Drexel's Environmental Collaboratory to create innovative, equitable and sustainable solutions to Philadelphia's pressing environmental challenges.

From developing cutting-edge technology to forging new educational partnerships and advancing community-based environmental justice work, the Academy's impact has never been greater — nor has its affiliation been more dynamic.

As we reflect on another transformative year at the Academy, I must express my deepest gratitude to David Griffith for his extraordinary decade of service on our board, including four remarkable years as Chair. David's passionate stewardship of our mission, coupled with his unwavering dedication to our staff and the diverse communities we serve, has elevated the Academy to new heights.

The achievements showcased throughout this annual report stand as a testament to his relentless commitment to unlocking the full potential of a unique partnership between one of the country's great natural history museums and one of America's most innovative universities. As David prepares to conclude his tenure in June 2025, I would like to wish him — on behalf of the Academy's board, staff, affiliates and supporters — a long, healthy and fulfilling retirement.

Thank you, David. And thank you, too, our cherished supporters, for continuing to do so much to make the Academy a true force for nature.

Scott Cooper  
President and CEO







## OUR MISSION

Understanding the  
natural world and inspiring  
everyone to care for it





# ACADEMY RESEARCH

The Academy explores cutting-edge advancements in the health of the local environment and supports novel approaches to the resilience of our global climate.



# What Happened to the California Condor?

Drexel students and Academy scientists are working together to lead novel research that is aimed at understanding the near extinction of one of the nation's largest and most iconic bird species, the California Condor.







In 1987, these condors were declared extinct in the wild. Over the last two decades, while their numbers grew in captivity and the birds were gradually reintroduced, scientists still remain cautiously optimistic and full of questions.

To understand what exactly led to this ecological tipping point, and what will need to happen to ensure their future conservation, Academy scientists, graduate students and Drexel University co-ops took on a novel research approach — studying parasites to learn about their hosts.

**“All birds are ecosystems in and of themselves,” says Jason Weckstein, Curator and Associate Professor in Drexel’s Department of Biodiversity, Earth and Environmental Science, “with each species having their own unique ectoparasites that co-evolve along with their hosts.”**

In other words, the DNA of the parasites can record the story of the bird — its population patterns, immunities and weaknesses, and its environmental adaptations over time.



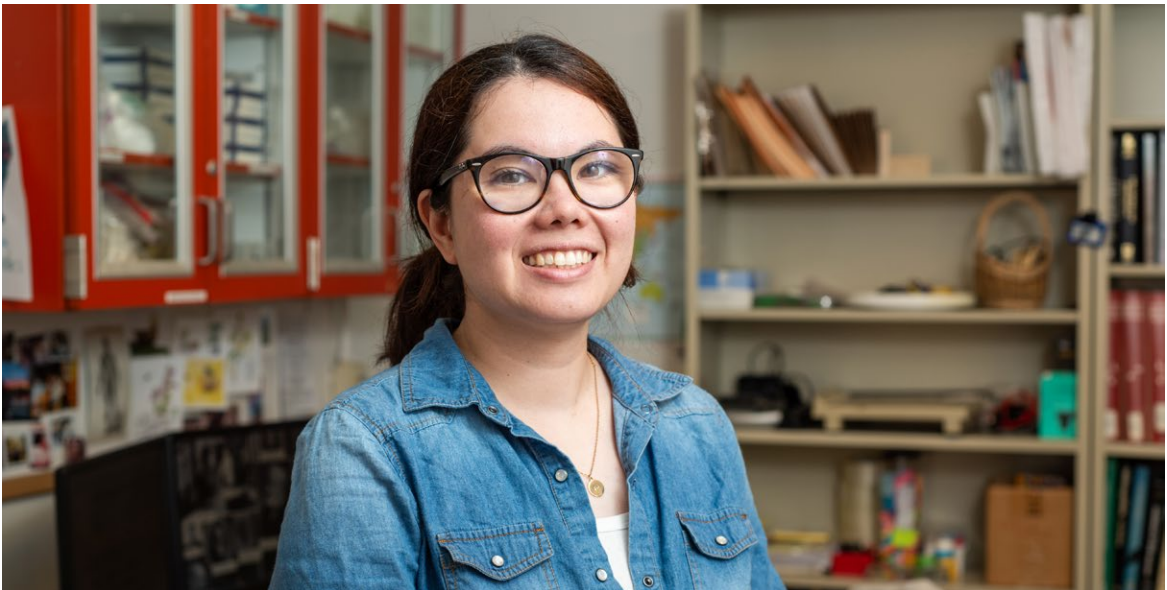
By studying these tiny parasitic insects, Academy scientists and Drexel students are unlocking information about the recent history of various bird species and creating a big picture of the environmental contributions impacting avian families. So, with rare, vulnerable or extinct species like the California Condor, this scientific breakthrough is monumental.



At the helm of this conservation work is Weckstein and Kamila Kuabara, Drexel graduate student turned lab manager of the Ornithology Collection, as well as Matthew Soesanto, BS '26, College of Arts and Sciences.

“I’ve been working on this project for almost a year, and it has definitely helped me,” Soesanto says. “I got the chance to present my work, communicate my research, enhance my skills in bioinformatics. I’m truly grateful.”

**“Our goal, here in the Ornithology Department, has been to deeply and seriously invest in undergraduate students for the long term,” Weckstein says. “We call it the scientific initiation,” Kuabara adds. Several Drexel undergraduates are also working as paid research and curatorial interns in the department.**



Co-ops are involved in every step of the scientific process — developing research questions, collecting data, doing fieldwork, visiting professional scholars and co-authoring published papers. In short, the Academy is truly a launchpad of scientific success.

These funded Drexel co-ops are also supported by National Science Foundation grants and the Academy’s own endowment, matched by gifts and donations designated toward young researchers. Contributions given to the collections are put right back into the real world through innovative research, training the next generation of budding new scientists.

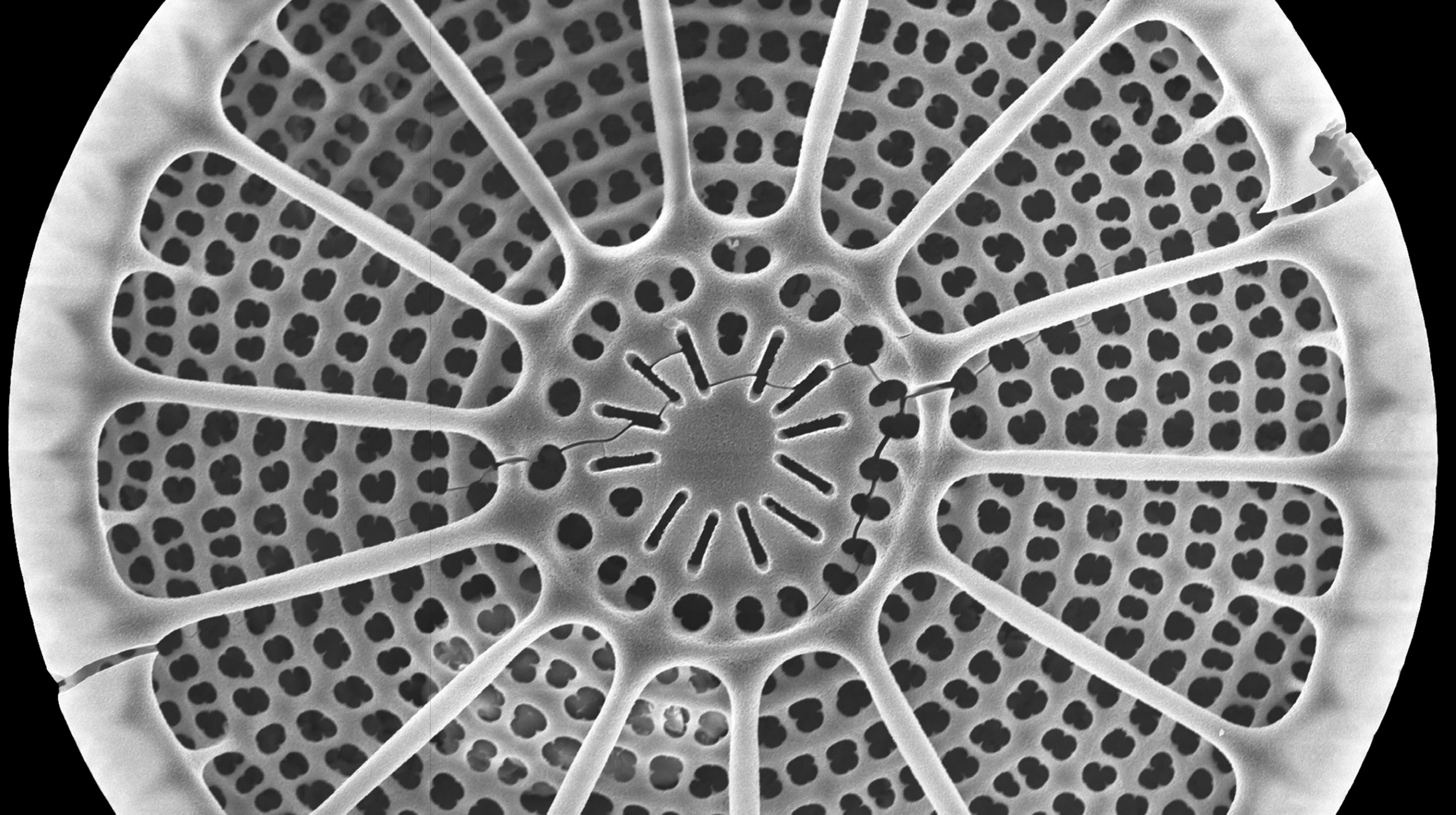




ACADEMY RESEARCH

One-fifth of the Earth's oxygen is  
created by tiny, microscopic and  
rather unknown organisms —

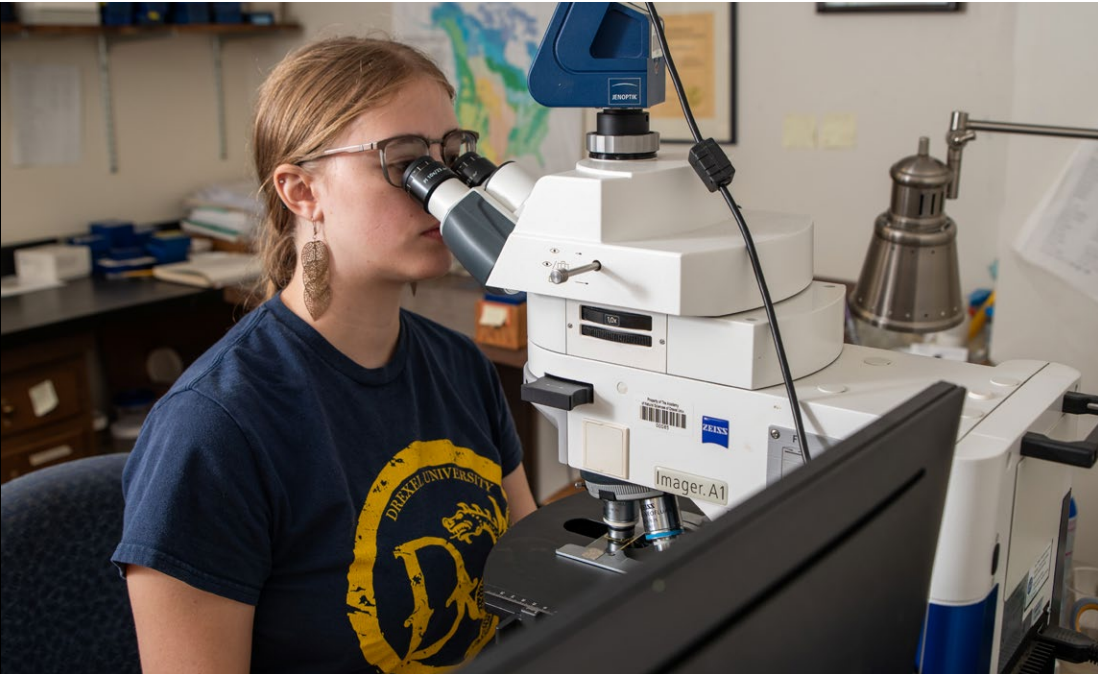
# DIATOMS





“We are often asked, why should we study diatoms, why should we care?”

Marina Potapova, Associate Professor in Drexel’s Department of Biodiversity, Earth and Environmental Science says. “The answer is simple: we can’t live without them.”



As biomarkers — indicators of change throughout time — diatoms have the unique ability to help scientists determine how ecological landscapes across the planet and deep into history have been impacted by climate change and human activity. “They are so incredibly important, to people and to scientists.”

The Academy is home to one of the world’s largest and most robust collections of diatoms, with Potapova as its curator. Inspired by the recent and thriving technological innovations in microscopy used to study the biomedical industry’s blood and tissue samples, Potapova set to work to develop a microscope that could provide the same level of detail to the collections’ many diatom

slides. Instead of having scholars visit to do their research in person, a time-consuming process that often involves global travel, she wanted the specimens to be openly shared across the globe and accessible to researchers in mere moments.

“No other diatom collection is doing this kind of digital work. We are truly at the beginning of this field of study.”

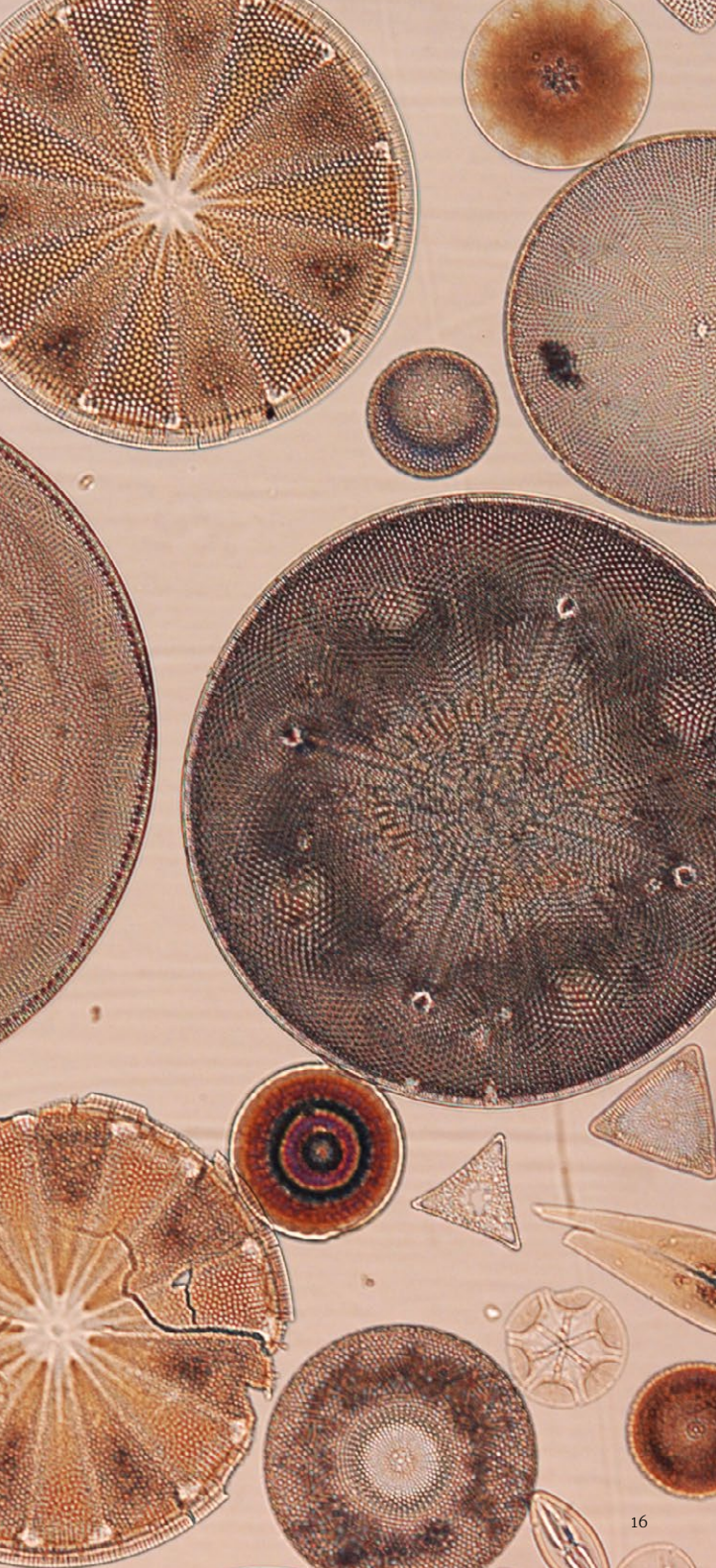
With a National Science Foundation grant of \$507K, Potapova has finally brought the study of diatoms into the future. Collaborating with professors and students in Drexel’s College of Medicine and College of Computing and Informatics, she has spent the last couple of years developing and overseeing the construction of a virtual microscope automatically controlled by digital software.

In half an hour, the technology will scan the diatom slide and take thousands of pictures, capturing with unheard of clarity the entirety of the sample, as well as its depth and detail. The images are then coded, compressed and converted into an interactive 3D image made publicly accessible to scientists and ecologists worldwide.

So far, over 3,000 slides have been scanned and decoded using this specialized and highly sensitive equipment — almost exclusively in part from dedicated and highly involved Drexel students.

“This is my first real job in the science field. I am actually getting to do the work and be a co-author on a paper, and it’s only my second year in college. This experience is very valuable,” Sylvia Leppik BS ’27, College of Arts and Sciences, says. Hannah Dominguez BS ’27, College of Arts and Sciences, adds, “We’re also making connections with other scientists, learning what skills we need for the future. This co-op opportunity has really reassured me.”

Plans are now in the works to collaborate with Drexel’s Metadata Research Center to produce additional high-quality data for each of the digital scans, helping to shape and enhance the future of sustainability and ecological work.





# Environmental DNA or eDNA

Utilizing novel technology — environmental DNA or eDNA — Academy scientists and Drexel students in the Department of Biodiversity, Earth and Environmental Science are quantifying local biodiversity.

Tanya Dapkey, the Macroinvertebrate Section Lead of the Patrick Center for Environmental Research, works with Academy scientists and Drexel co-ops all along the edges of the Delaware River. Small clear vials of water, their collected samples, will be filtered and processed using a novel technique aimed at detecting particles of living organisms — eDNA.



Without catching a single live fish or frog or cutting down a single plant or flower, scientists like Dapkey can use eDNA to track and quantify the ecological community of a specific area — what lives there, their numbers, their history, their invasive species — painting the true picture of local ecology in real time.

Unlike traditional techniques, eDNA usage in fieldwork can more quickly and accurately advance the understanding of the composition of an entire environment, helping Academy scientists and Drexel co-ops to better inform policy and approaches to conservation management.





**“The eDNA work  
being done is extremely  
important for preserving  
and protecting our  
waterways,”**

says Maddie Worth, BS '23, College of Arts and Sciences. She is now a PhD student at Cornell University studying entomology. “Working with Tanya Dapkey and the Academy’s Macroinvertebrate Department truly helped me develop my passion for the environment and biodiversity. I am proud and grateful to have been a co-op here.”

Funded by U.S. Fish and Wildlife Service and a matched Academy endowment, Dave Keller, the Fisheries Section Lead in the Academy’s Patrick Center for Environmental Research, is also using eDNA for conservation: to help locate, identify and preserve an Eastern U.S. native fish, the Ironcolor Shiner, now found in only a handful of sites across the whole state of New Jersey.

“These efforts are about trying to conserve and restore, preserve and protect this critical species,” says Keller. “Our goal is to bring it back from the brink.”

But the results of their data and findings are only as good as the references to which they are compared. This is why museum collections, like the Academy’s, are so vitally important.



Without taxonomists standing behind this data, naming and describing what they have found using this novel tool, the data doesn't mean anything.

Samples from study sites will be stored in the Academy's collections for perpetuity, building up an accurate library of information about the region's major waterways, watersheds and natural lands throughout time.

Now and in the future, Drexel researchers or scientists from across the nation can access the specimens and their data to better understand the regional impacts of climate change, sustainability and environmental conservation needs.

**We don’t know what questions  
we’ll be asking in the future, but the  
answers lie here in the Academy.**





# EXPERIENTIAL LEARNING

The Academy creates new educational opportunities for leadership and growth and develops cultural partnerships across Philadelphia to generate future impact.



# Exhibits & The Museum Innovation Fund (MIF)

As the public museum affiliated with Drexel University, the Academy opens doors to endless possibilities of experiential learning.



The Academy activates Drexel research and collections with exhibitions and community-based projects that showcase the groundbreaking scientific work and cutting-edge creativity of Drexel faculty, scientists and students to tens of thousands of people annually.



The landmark exhibition *Life Onto Land: The Devonian* highlighted the achievements of the Academy's Vertebrate Paleontology Department under the leadership of Ted Daeschler, PhD, longtime Drexel professor and Academy curator. Their world-renowned discoveries have transformed the understanding of evolution. By centering this remarkable research story, *Life Onto Land* illuminated the importance of this period to advance the public's understanding of natural history and what scientific discovery really looks like.



The Academy's exhibits and galleries are spaces where both social and scientific awareness is built. *Conversations With Birds* celebrated the role of community science in a powerful local campaign to protect avian populations. It also sparked hope and joy as we convened diverse birding clubs around the city and uplifted Black excellence in birding. The exhibit *Illuminating Birds* highlighted the role of the arts in advancing both public engagement and scientific understanding of the natural world through hands-on workshops and events.

And through the Museum Innovation Fund (MIF) program, even more ways of experiential learning are being generated. "Academy exhibits and programs create a unique opportunity for Drexel faculty and students to engage with other thinkers of our time and develop novel approaches to public experience," Marina McDougall, Vice President of Experience of Engagement says.

Providing seed funds to explore the intersection of science and art, the MIF program helps bring Drexel creative ideas to fruition. "Drexel faculty and students work alongside our exhibition design staff in research and development," McDougall says. "They are hands-on, generating ideas, fine-tuning details and surveying success."



**The Academy is a learning lab — of science, of public engagement, of creativity, of experience.**





# Library & Archives and The Department of History



Beyond its 250,000 rare books and countless one-of-a-kind archival journals, fieldnotes and scientific illustrations, the Academy's Library & Archives is a thriving hub of collaboration. Now hand in hand with Drexel's Department of History, the Academy is forging scholarly research on the environmental humanities while creating community.



Department Head and Full Professor of History, Tiago Saraiva, and Executive Director of Library & Archives, Pedro Raposo, jointly led a pilot experience that encouraged students to explore environmental history of the natural sciences using the Academy’s collections.



Their enormous success will inform a more permanent course titled *Making Environmental History: Archives, Rare Books and Specimens*, and several other collaborations.

“This collaboration with the Academy showcases why learning history at Drexel is different.”

“Students experiment making history with their own hands, by engaging materials from a world-class collection of scientific objects from across the globe documented by rich archives and rare books,” explains Saraiva.

One of these projects, the History/L&A co-op program, now in its second year, has invited students to investigate innovative perspectives on the Academy’s history, its scientific collections and its activity as a museum. “Students develop their own research in cutting edge themes in history, while being offered co-ops pointing to meaningful career pathways for history graduates,” Saraiva says.



With access to research professionals, rare historic materials and real opportunities for creativity, leadership and project management, co-ops are forging their careers in an environment found nowhere else in the city.

“The Academy has been an institution where I have become the best version of myself,” says Nathan Nazario, BS '25, College of Arts and Sciences. “It gave me opportunities I didn’t know were possible. Here, I grow as a researcher, and I have been able to be a real part of the Academy community.”

As the course blossomed, Raposo and Saraiva also co-convened SpeCIMEn (Special Collections, Ideas and Materialities



of the Environment), a collective of faculty, scientists, students, librarians, collections specialists and museum professionals from the Drexel community and beyond, who are brought together for lively in-person academic discussions around recent, groundbreaking scholarship in the history of the natural and environmental sciences — always complemented with the examination of actual specimens, rare books and archival materials from the Academy’s collections.

These successes are also paving the way for a research fellowship program in the history of the natural and environmental sciences, that will not only strengthen this collegial bond, but also open doors to broader academic opportunities for all.

Drexel faculty and students have come to know the Library & Archives as a space of academic potential, professional growth and of course, community.



# INNOVATION

The Academy advances the future of digital innovation with scientific digital infrastructure and empowers an ever-growing network of new, diverse ideas.



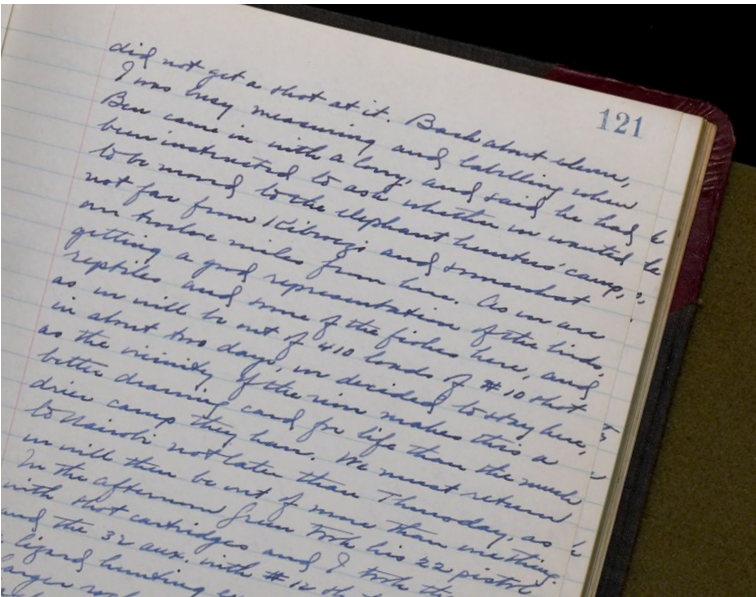
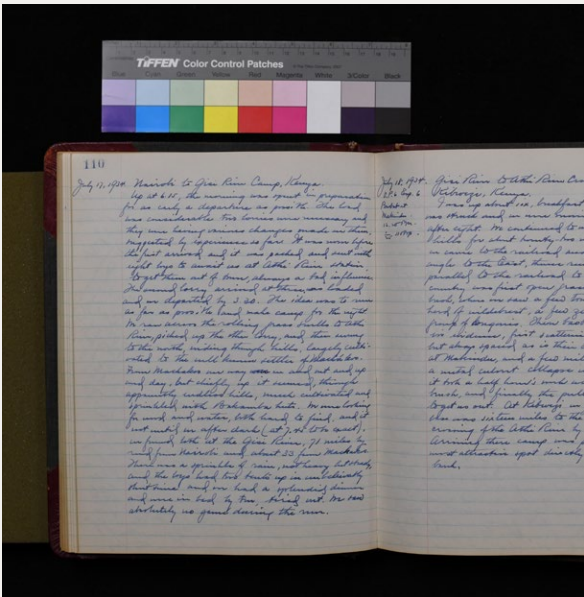
# Digital Collections Infrastructure



Each and every specimen in the Academy's collections — 19 million and counting — has a unique story to be told. Deeply connected to cultures, people, scientific thoughts and changing times, these specimens not only inform us about biological and ecological qualities, but also the history of humanity.



In the last decade, Academy scientists and librarians have been actively digitizing and making accessible specimen data that greatly enhances and improves the collective capacity to investigate the century’s critically important issues, such as climate change, biodiversity loss and evolution. But much of that data lives in disparate databases, unconnected to each other.



Now, designs are in the works to bring all these specimens and over two centuries of institutional history together into one accessible place. The new digital collections infrastructure will centralize and unify the institution’s vast and deep scientific knowledge, as well as connect many collections to historic field journals, rare archival materials and other one-of-a-kind specimens. All this information will be made searchable and accessible to researchers in the Drexel community and across the globe.

**“Right now, we are framing and advancing the work, positioning ourselves at the forefront of museum stewardship,” Mariangeles Arce H., Executive Director of the Center for Systematic Biology and Evolution says.**

As the Academy continues to convene with Drexel University faculty and various global aggregators to develop the best-in-class methods to connect all this information together, scientists and librarians on the ground are discussing new and innovative tools that can enhance this information network — such as artificial intelligence and machine learning.

And because this database work relies on novel digital infrastructures, it also has the enormous capacity to create future jobs and educational opportunities for the Drexel community.

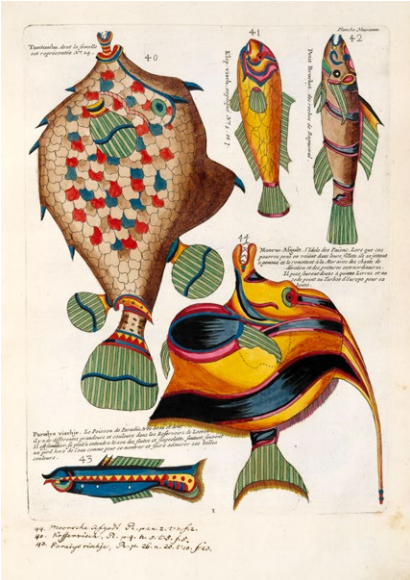
“AI in the library world is still relatively new,” says Briana Giasullo, Cataloging Resources Librarian. “We’re hoping to use this infrastructure to help create the standards.”

With a few grants in the pipeline, Giasullo joins the other librarians at the Academy with the aim to create more real-world training opportunities for Drexel faculty and students to be at the forefront of museum and library innovation.

**“This is the opportunity to do it right — to create a world-class equitable database and enhance our understanding of global biodiversity and natural history,” Arce H. adds.**







Digitization is an integral part of collections care, preserving fragile artifacts and historic documents while making them widely accessible. Through its partnership with Biodiversity Heritage Library, the Academy of Natural Sciences joins a global network of biodiversity institutions that pool expertise and resources to share their natural history collections with the world.

— JJ Dearborn, BHL Data Manager

BHL benefits from the active and open collaboration of institutions like the Academy, that contribute to an invaluable global network of collections, resources and technology, ensuring greater opportunities for collaborative connections in the future.

— Bianca Crowley, BHL Digital Collections Manager





# The Environmental Collaboratory Partnership

Together with Drexel's Environmental Collaboratory, the Academy of Natural Sciences is helping to create innovative, equitable and sustainable solutions to the environmental challenges of the city, all with the community in mind.





The ethos is simple: help improve the quality of life for the people of Philadelphia and the surrounding regions.



With the support and leadership of The Environmental Collaboratory, projects are co-created and sustained by community members, local organizations and Academy scientists with a collective aim to address their climate change resilience.

"Based on input from community organizations, The Environmental Collaboratory works with the Academy to translate community priorities and concerns," says Mathy V. Stanislaus, Esq., Vice Provost and Executive Director of The Environmental Collaboratory, "in order to depict the environmental justice and socio-economic circumstances of communities across Philadelphia."

With a grant from the Institute of Museum and Library Services, Drexel's Enviromental Collaboratory and the Academy also

partnered with West Philadelphia's Overbrook Environmental Education Center to create the Science Shop.

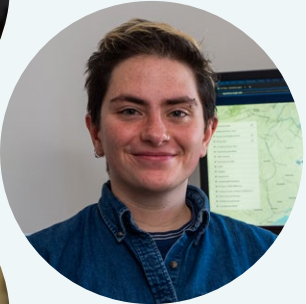
Hailing from Europe, this particular model of community-based participatory research inspired one of the first of its kind here in the United States. By offering rigorous research and access to regional and historic data sets from the Academy, Science Shop continuously addresses and supports the environmental needs of underserved local communities.

And because of its simple yet overwhelming success, the Academy received an additional grant from the National Oceanic and Atmospheric Administration to expand the horizon of this work into three regions outside Philadelphia.

**"We appreciate having access to the Academy's technical, policy and research expertise that serves to advance our actionable and urgent community-initiated projects," says Jerome Shabazz, Executive Director of Overbrook Environmental Education Center.**

Beyond the city, Academy scientists also join leaders in The Environmental Collaboratory and other organizations to form the Pennsylvania Climate Initiative. Working with municipalities across the Commonwealth of Pennsylvania, as well as across state lines, these scientists are meeting with communities and groups, providing educational workshops and helping ascertain their climate change resiliency needs.

By combining the Academy's scientific expertise with Drexel's vision of leadership and innovation, these scientists are continuing to revolutionize sustainability and support local communities — now and into the future.





# Celebrating the 40th Anniversary of Women In Natural Sciences



The Academy's Women In Natural Sciences program celebrated 40 years of phenomenal success. Over four decades, it has introduced a thousand local high school students to hands-on science workshops, career and college exploration opportunities and positive youth development in Philadelphia. Expansions are now in the works, including a robust mentorship network to support professional WINS alumnae.



WINS helped me to understand that I am part of an expansive and complex ecosystem and that my life and what I do with it matters.

— Distinguished Alumna Zakia Elliott,  
*Co-Director of Soil Generation*

## EVENT SPONSORS







# Board of Trustees

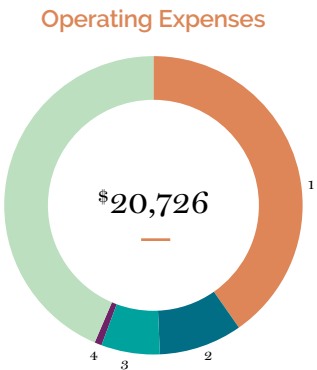
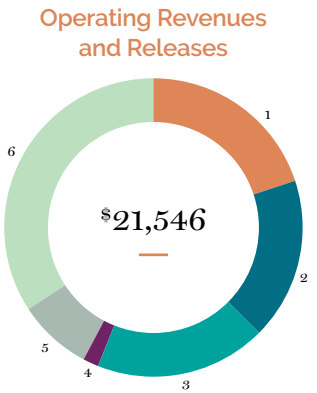
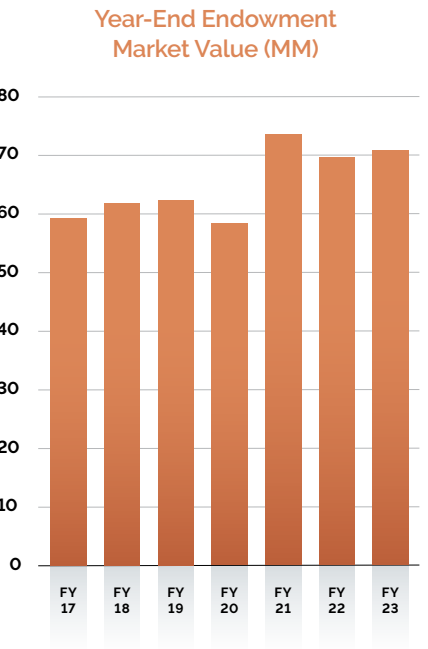
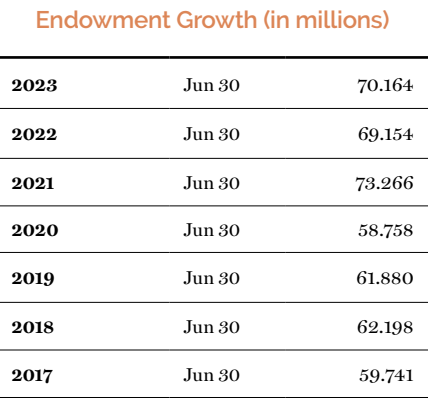
As of November 12, 2024

Joshua C. Anthony, PhD  
Jeffrey A. Beachell  
Suzanne Biemiller  
Amy L. Branch (*Secretary*)  
Erica L. Carpenter, MBA, PhD  
Scott A. Cooper, PhD (*President and CEO*)  
Maureen Craig (*Vice Chair*)  
Christopher Crockett, PhD, PE  
Abbie Dean (*Vice Chair*)  
Robert J. Delany  
Suzanne Eveland  
Jason Friedland  
John A. Fry  
Marc E. Gold  
David E. Griffith (*Chair*)  
Jean M. Hacherl, PhD  
Latasha D. Harling, CCP, SHRM-SCP  
Kevin Kowalick  
Rashaad S. Lambert  
Sandra McLean  
Allen J. Model (*Vice Chair*)  
Jeffrey Morgan duPont Nielsen  
Ron M. Philip  
Michael H. Reed, Esq. (*Vice Chair*)  
Rebecca Rhynhart  
Gerald B. Rorer  
John F. Smith III, Esq.  
Michael K. Tucker, Esq.  
Robert S. Victor (*Treasurer*)  
Sharon L. Walker, PhD, F. AEESP, F. AAAS

**Emeritus Trustees**  
Peter A. Austen  
John F. Bales III  
Cynthia P. Heckscher  
Edward A. Montgomery, Jr.  
I. Wistar Morris III  
Minturn T. Wright III

# Statement of Activities

For the Year Ended June 30, 2023 (in thousands)



The groundbreaking academic department, **Biodiversity, Earth & Environmental Science (BEES)**, formed upon the affiliation of the Academy and Drexel University, had a full-time equivalent enrollment of 159 students in the 2022-2023 academic year.

Operating Revenues and Releases	Without Donor Restrictions	With Donor Restrictions	Total
1. Grants and Contracts	\$2,191	\$2,106	\$4,297
2. Contributions	1,326	2,444	3,770
3. Allocations of Endowment Spending from Financial Capital	707	3,297	4,004
4. Investment Income, Net	370	12	382
5. Auxiliary Enterprises	1,731	–	1,731
6. Other Income	7,359	3	7,362
<b>Total Revenues</b>	<b>\$13,684</b>	<b>\$7,862</b>	<b>\$21,546</b>
Net Assets Released from Restriction	6,945	(6,945)	–
<b>Total Revenues and Releases</b>	<b>\$20,629</b>	<b>\$917</b>	<b>\$21,546</b>

## Operating Expenses

1. Salaries and Wages	\$8,338	–	\$8,338
2. Employee Benefits	1,923	–	1,923
3. Depreciation and Amortization	1,290	–	1,290
4. Interest	10	–	10
5. Other Operating Expenses	9,165	–	9,165
<b>Total Expenses</b>	<b>\$20,726</b>	<b>–</b>	<b>\$20,726</b>
<b>(Decrease) / Increase in Net Assets from Operating Activities</b>	<b>(97)</b>	<b>\$917</b>	<b>\$820</b>

## Non-operating

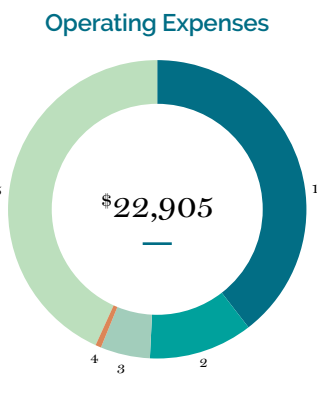
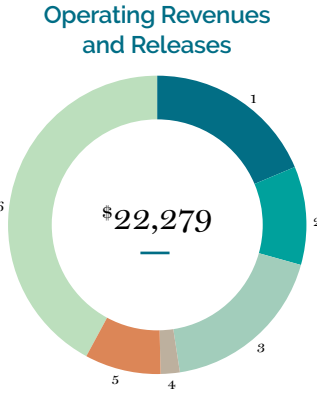
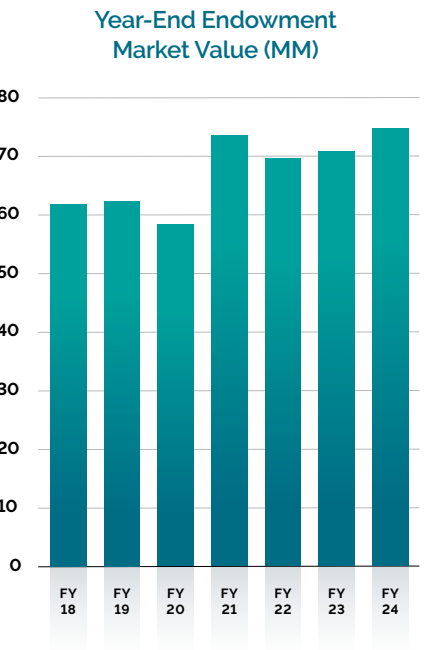
Contributions - Endowment and Other Gifts	–	\$232	\$232
Realized/Unrealized Net (Loss) / Gain on Investments, Net of Endowment Payout and Expenses	(2)	1,220	1,218
Change in Funded Status of Defined Benefit Plan	1,261	–	1,261
<b>Increase in Net Assets from Non-operating Activities</b>	<b>1,259</b>	<b>1,452</b>	<b>2,711</b>
<b>Total Increase in Net Assets</b>	<b>1,162</b>	<b>2,369</b>	<b>3,531</b>
Net Assets, Beginning of Year	\$6,820	\$86,410	\$93,230
Net Assets, End of Year	\$7,982	\$88,779	\$96,761





# Statement of Activities

For the Year Ended June 30, 2024 (in thousands)



The groundbreaking academic department, **Biodiversity, Earth & Environmental Science (BEES)**, formed upon the affiliation of the Academy and Drexel University, had a full-time equivalent enrollment of 160 students in the 2023-2024 academic year.

Operating Revenues and Releases	Without Donor Restrictions	With Donor Restrictions	Total
1. Grants and Contracts	\$2,003	\$2,147	\$4,150
2. Contributions	1,086	1,296	2,382
3. Allocations of Endowment Spending from Financial Capital	711	3,369	4,080
4. Investment Income, Net	410	19	429
5. Auxiliary Enterprises	1,860	–	1,860
6. Other Income	9,376	2	9,378
<b>Total Revenues</b>	<b>\$15,446</b>	<b>\$6,833</b>	<b>\$22,279</b>
Net Assets Released from Restriction	7,448	(7,448)	–
<b>Total Revenues and Releases</b>	<b>\$22,894</b>	<b>(615)</b>	<b>\$22,279</b>

Operating Expenses

1. Salaries and Wages	\$9,065	–	\$9,065
2. Employee Benefits	2,576	–	2,576
3. Depreciation and Amortization	1,249	–	1,249
4. Interest	30	–	30
5. Other Operating Expenses	9,985	–	9,985
<b>Total Expenses</b>	<b>\$22,905</b>	<b>–</b>	<b>\$22,905</b>
<b>(Decrease) in Net Assets from Operating Activities</b>	<b>(11)</b>	<b>(615)</b>	<b>(626)</b>

Non-operating

Contributions - Endowment and Other Gifts	–	\$1,426	\$1,426
Realized/Unrealized Net Gain on Investments, Net of Endowment Payout and Expenses	45	3,291	3,336
Change in Funded Status of Defined Benefit Plan	570	–	570
<b>Increase in Net Assets from Non-operating Activities</b>	<b>615</b>	<b>4,717</b>	<b>5,332</b>
<b>Total Increase in Net Assets</b>	<b>604</b>	<b>4,102</b>	<b>4,706</b>
Net Assets, Beginning of Year	\$7,982	\$88,779	\$96,761
Net Assets, End of Year	\$8,586	\$92,881	\$101,467



# Thank You

On behalf of the Academy's Board of Trustees, we wish to recognize and thank those supporters who contributed to the Academy between July 1, 2022 and June 30, 2024. Your generosity helps to fund the Academy's scientific research and education programs, and we are tremendously grateful. Because of your steadfast support of the Academy, our science never stops.

## Fiscal Year 2023

### \$200,000 to \$999,999

The Boeing Company  
The Cotswold Foundation  
Hamilton Family Charitable Trust  
Martha H. and I. Wistar Morris III  
Pew Center for Arts and Heritage  
Elizabeth and Gerald B. Rorer  
Cameron C. and John Jeming Soroko  
William B. Dietrich Foundation

### \$100,000 to \$199,999

Thomas Dolan IV♦  
Good Samaritan, Inc.  
David and Jacqui Griffith  
The Horace W. Goldsmith Foundation  
Kline & Specter, P.C.  
Anthony Marich, Jr.♦

### \$50,000 to \$99,999

Jeffrey A. Beachell  
Jeff Benoliel and Amy Branch  
Jean G. Bodine♦  
The Charles E. Ellis Grant and  
Scholarship Fund  
Comcast  
Abbie and Patrick Dean  
Patty and Rob Delany  
ExxonMobil  
Roberta E. Gausas and Allen J. Model  
GlaxoSmithKline  
Leo Model Foundation, Inc.  
The McEwen Family Scholarship Fund  
at Modern Group Ltd.

♦ Deceased

### \$25,000 to \$49,999

Anonymous  
Joshua and Tracy Anthony  
Jane and John Bales  
Julian and Lois Brodsky  
Elaine W. Camarda and A. Morris Williams, Jr.  
Erica and Robert Carpenter  
Maureen Craig and Glenn Goldberg  
Mark and Suzanne Eveland  
Exelon Foundation  
Jason and Katy Friedland  
Marc and Sharon Gold  
Rod and Kerry Henkels  
The Hess Foundation, Inc.  
Horner Foundation  
Jane C. MacElree Family Foundation  
Jeffrey A. Beachell Fund of the  
Philadelphia Foundation

John and Susan Smith Family Fund  
Julian A. and Lois G. Brodsky Foundation  
LTM Family Foundation  
Jane C. MacElree  
Marshall-Reynolds Foundation  
Linda and Tom McCarthy  
Sandra Lee McLean  
Alexandra U. Moede  
Edward A. Montgomery Jr.  
OOS Charitable Corporation  
Robert M. and Susan W. Peck Jean Preston  
Rod and Kerry Henkels Family Charitable Fund  
The Rorer Foundation, Inc.  
Schwab Charitable  
Sixers Youth Foundation  
Susan B. John F. Smith III  
Oona Sperr  
Michael Tucker and Renee Hogue Tucker  
Minturn T. Wright III



### \$10,000 to \$24,999

Anonymous  
Joseph F. Baker and William Shaw Mulherin  
Richard Belas and Judith Soltz  
The Charles Wentz Carter Memorial Foundation  
Dana and Neil Cohen  
Maude de Schauensee  
E. Walker Mulherin, Jr. Fund of the Community  
Foundation of Greater Memphis  
Ralph C. Eagle Jr.  
Alexandra Edsall and Robert Victor  
Marilyn Fishman and James MacElderrys  
Giant  
Ellen Harvey and Tad G. Sperry  
Hoxie Harrison Smith Foundation  
Angela Hunt and Robert McLaughlin  
John and Patricia Imbesi  
Keep Pennsylvania Beautiful  
Jennifer and Kevin Kowalick  
Karen and Wayne Lattuca  
Jeanette Lerman-Neubauer and Joe Neubauer  
The McLean Contributionship

Elizabeth P. McLean  
Katie and Bill McNabb  
Millrace Foundation  
Neubauer Family Foundation  
Annie and Jeffrey Nielsen  
Origlio Beverage  
Philip Family Donor Advised Fund  
of BOA Charitable Gift Fund  
Reni and Ron Mammen Philip  
Post Brothers  
Francis Rasmus♦  
Herbert T. Rorer  
Saint-Gobain  
Art and Carol Silverman  
The Sparvey Fund  
Joly W. Stewart♦  
The Wawa Foundation  
Wawa, Inc.  
The Wayne and Karen Lattuca Charitable Fund  
West Pharmaceutical Services, Inc.  
William Penn Foundation  
Douglas A. Wolfe

### \$5,000 to \$9,999

AAAnonymous (2)  
Myron and Sheila Bassman  
Peter A. Benoliel and Willo Carey  
Blue Sky Family Foundation  
Brian R. Ford Sr. Family Fund  
Christian R. & Mary F. Lindback Foundation  
The Christopher Ludwick Foundation  
Amy and R. Putnam Coes III  
Dolfinger-McMahon Foundation  
Exelon Corporation  
Fiduciary Trust International  
Brian and Evelyn Ford  
Elizabeth H. Gemmill  
Yalta Gilmore-Reed and Michael Reed  
Green Mountain Energy  
Gretchen and Jay Riley Gift Fund  
Latasha Harling  
Penelope P. Harris  
Cynthia and Martin Heckscher

The Legnini Family  
The McCausland Foundation  
Bonnie and Peter McCausland  
Mi Casita Preschool  
Jeffrey D. and Lisa M. Miller  
Ranney and Theresa Moran  
Morgan Lewis  
Melissa Morris and Miguel Perez  
Barbara Oldenhoff  
Dawn and Fen Pate  
PECO an Exelon Company  
Barbara and Michael Perilstein  
Melissa Page Peter  
Putnam and Amy Coes Family Charitable Fund  
Republic Bank  
Joe and Kim Reynolds  
Gretchen and Jay Riley  
Vandy Charitable Foundation  
Robert and Suzanne Welsh



\$2,500 to \$4,999

Sarah S. Alfadl  
Leigh Altadonna and Carol Hresko-Altadonna  
John and Kat Berkowitz  
BNY Mellon Wealth Management  
John and Julia Buonagurio  
R. Kent and Susan Cadwalader  
Jenny Rose and Gus Carey  
Charities Aid Foundation of America  
Clean Tech Services, Inc.  
Cornell University CALS  
The Daeschler Family Fund  
Emily and Ted Daeschler  
Nancy B. Davis  
Delaware Valley Ornithological Club  
Sandra S. Drayer  
Nancy and V. Richard Eales  
Jane I. Earle  
Mary L. Felley  
Global Philadelphia Association  
Janice T. Gordon  
Carole Chew Williams Green  
Tucker C. Gresh  
Jane and Paul Heintz  
Jessie B. Hill  
Janet S. Klein  
Katherine Hovde and Kenneth Kulak  
John T. Lehman  
Joanna McNeil Lewis  
Maxine S. Lewis  
Katherine Lucas  
William McHenry  
Elizabeth R. McLean  
Arthur E. Newbold IV  
Pennoni Family Foundation  
Chuck Pennoni  
Pfizer, Inc.  
Jewel and W. Hart Rufe III  
Jane and Scott Satterfield  
Bruce and Joanne Shanzer  
Chen W. Young

♦ Deceased

\$1,000 to \$2,499

Anonymous  
Franny and Franny Abbott  
Affleck Family Charitable Trust  
Cynthia H. and John A. Affleck  
The Albert Trust  
Aqua America, Inc.  
W. Graham Arader III  
Cindy and Pierce Archer  
Archway Community Properties, LLC  
Ellen Asplundh  
Austelle Foundation  
Amy and David Badler  
Mary Jane Barrett and John A. Terrill  
Wallace Beard and Joseph O'Hare  
Gudrun and T. Peter Bennett  
Kenneth S. Blackney and Robert R. Ditto  
Bluestone Foundation  
Bill and Laura Buck♦  
Bill and Sheryl Bullitt  
Noel Chavez  
Cheryl and Radcliffe Cheston  
Christopher B. Asplundh Family Fund of  
the Philadelphia Foundation  
The Cliffe and Cheryl Cheston Charitable Fund  
Barbara Cobb  
Carol and Richard Collier  
Scott and Shirley Cooper  
Christina and Christopher Crockett  
Gudrun Dauner and Derick Dreher  
Margaret Chew Dolan  
Elizabeth P. McLean Charitable Fund  
Ellie and Tom Elkinton  
Robert W. Ellis  
Peter A. Evans  
Claudine Farrand and Daniel Moerman  
Keri Fisher and Sean Rhoads  
Alexandria Garrity  
The George & Elizabeth Gephart  
Charitable Fund  
Elizabeth S. and George W. Gephart Jr.  
Gilroy and Lillian P. Roberts  
Charitable Foundation  
Margaret and Richard Greenawalt  
Mark and Vivian Greenberg  
GrowingGreat

Barbara D. Hauptfuhrer  
Louise A. and Peter H. Havens  
Holt Weil Fund  
Hufty Foundation  
Dennis Hummel  
Independence Foundation  
JacobsWyper Architects  
Scott and Yardly Jenkins  
Katzenbach Family Charitable Fund  
Brooke and Tom Katzenbach  
James King and Joan Nathan  
The Lapham Family  
Carter R. Leidy  
Frances H. Leidy  
Courtney and Page Leidy  
Leslie Miller and Richard Worley Foundation  
John Lundberg and Lucinda McDade  
Samuel and Susan Madeira  
Marina McDougall and Zane Vella  
Karen and William Mestichelli  
Jim and Joan Moore  
Diane L. Myer  
Joseph A. O'Connor Jr.  
Garry O'Rourke  
Ann and Lanny R. Patten  
Cynthia and Robert Pizziketti  
Renewal by Andersen of Greater Philadelphia  
Nicole Juday Rhoads and Samuel V. Rhoads  
Brian Robbins and Jennifer Merves Robbins  
Robert and Marie Benz Charitable Foundation  
The Robert P. and Barbara D. Hauptfuhrer  
Philanthropic Fund  
The Rounds  
Andrea Rowe and Benjamin Stahl  
Michael Rueter and Julie Stone  
The Ruth T. Chavez Living Trust  
Alfred E. and Patricia R. Schuyler  
Karen and Robert Sharrar  
Stephen Smith  
Ann and Martin Avery Snyder♦  
Jamie Stewart  
Patricia Tyson Stroud  
United Way of Greater Philadelphia  
and Southern New Jersey  
Bonnie and James L. Van Alen  
Deborah Holt Weil

Peter and Susan Wilmerding  
Wong Giving Fund  
Catherine and Stephen Wong  
Catherine A. Worrall  
David and Karen Wright

\$500 to \$999

Nathan Balsham  
The Buck Family Fund  
Elinor Hosterman Buck and James M. Buck III  
The Cleveland Family Charitable Fund  
Nancy and Robert Cleveland  
Michael Danziger  
Eileen and Lee Mathias Charitable Fund  
Amanda Friedrich and Marie Mayer  
Ariel and Lisa Givner  
Margaret Godbey and David Hellen  
Richard L. Goldberg  
Kara and John Goodchild  
Marshal and Tamar Granor  
James Green and Rosalind Remer  
Nancy G. Harris  
Lisa K. Hastings  
Alice and Peter Hausmann  
Lois V. Hill  
Faith A. Horowitz and Richard A. Speizman  
Daphne Hu and Benjamin Sun  
Lesley Ann Hughes  
Pemberton Hutchinson  
Jacob Burns Foundation  
Craig N. and Sally Johnson  
Mitchell Kelly and Tracy Russo  
Donald Krapf and Laura Raab  
L. K. Hastings Charitable Fund  
Jon Landau and Signe Wilkinson  
John Makara and Kathy Patterson  
Rose M. Marinaro  
Roberta A. Martin  
Elizabeth Mataset and William Matulewicz  
Eileen and Lee Mathias  
Steven G. Maurer  
Debra McCarty and Richard Stasiorowski  
Alex and Nancy Miller  
Mary Morton  
James and Lori Murphy  
Douglas and Frances Nadel

The Nelson S. Talbott Foundation  
Joanne and Joseph Noreika  
André and Jeannine Payne  
Joseph and Marlene Ramsay  
Raymond James Charitable Endowment Fund  
David and Sarah Reiner  
Shirley Reiner  
Lois M. and Stanley A. Singer  
Corey R. and Jonne K. Smith  
The Speizman-Horowitz Fund  
Julia Tiernan  
Upsalquitch Fund  
David R. Wilmerding  
Jean Witmer  
Worldwide Specimen Shells

\$175 to \$499

Said Al Abrawi and Nasra Al Maamari  
Alyson N. Owen-Craig M. Oliner  
Family Charitable Fund  
AmazonSmile Foundation  
Dennis and Jo Ambrose  
Bernard and Nancy Anderson  
Naveen Balasundaram and  
Himangshu Rathinakumar  
Stephen Balbier and Marissa Parker  
Elizabeth Bales and Michael Dell'Angelo  
Maurice Baynard  
Sylvia R. Beck and Jay L. Federman  
Jennifer and Mark Berlinger  
Jana and Jason Bernstein  
Victoria Binetti  
Jeff and Kristen Block  
Nathaniel Bordy and Mary Alice Hartsock  
Scott Broer and Mark Weiss  
Rebecca Brown and Joshua Seeherman  
Marie Brydges and Laura Cybulski  
Regan Buker and Brad Spenla  
Katherine Butler  
Stephen Cantando and Trent Rhodes  
Christopher B. Chandor  
John Chappelle and Luisa Ossa  
Joan and Joel Chinitz  
Jason Chiu and Danielle Sim  
Arthur M. Cohn  
Cathy Collautt and Sam Stein

Michael Conway and Laura Vanderkam  
Alexandre Costabile and Susan Dando  
Katrina Counihan and Isaac London  
J. J. Cutuli and Janette Herbers  
Philip Dames and Lily Kass  
Dena and James L. Dannenberg  
Elizabeth and Michael Dantonio  
David and Eileen Eskin Family Fund  
Fernanda Diaz  
Abby Dietzler and Allyson Mercer  
Marc DiNardo and Elizabeth Drum  
Sophie B. Donaghy  
Anne Douglas and Evan Eisler  
Jonathan Dunsay and Caroline Tiger  
Earl and Helen Poole Memorial Fund  
Jeffrey Edelman  
Alan and Natalie Eisen  
Bonnie and Jay Eisner  
Elizabeth and Robert Lukens Charitable Fund  
Roberta and Saul Epstein  
David and Eileen Eskin  
Lee Faden and Sharon Marcus  
Joseph Falco  
Alexandra and Bryan Favilla  
Albert Filemyr  
Harvey and Marian Forman  
Doreas A. and Frank B. Foster III  
Frank and Terry Foster Family Fund  
Kenneth and Susan Frank  
Dru Frazer-Goren and Ronald C. Goren  
Jerry Freilich  
William J. Frezel  
A. Cope and Anna M. Garrett♦  
The Garvin Family  
Carol and Martin Gehlhaus  
Kimberly and Timothy Goodell  
Alan and Greta Greenberger  
Bonita and James Hay  
Gayl and Herbert Henze  
Fredrik and Katherine Hiebert  
Lynda K. Hitschler  
Eileen Hoerst  
Alexa and Michael Hogarty  
Christopher and Suzanna Hosein  
Kathy Howard and Daryl Mecklem  
Cheilonda Johnson and Ibrahim Walden

Kathy Jones-Nestor and Paul Nestor  
Eldridge T. Katzenbach Jr.  
Carl and Susan King  
Carol and Richard C. Kovach  
Jason Kuhn and Emily Romick  
Brandi and Derek Kunz  
Lois Kuter  
Edna and Stanford Lamb  
Erica and Ryan Leary  
Joanna Littleton  
Robert Locke and Sarah Thorne-Locke  
William A. Loeb  
Jonathan Loeb and Catherine Loh  
Betsy and Bob Lukens  
James and Paula MacCombie  
Mason Family Charitable Account  
Charles E. Mason  
Hugh and Trina Vaux McCauley  
Carolyn McCreary  
Charles and Kathy McCulley  
Diane and Paul McGonigle  
Elizabeth Mednick  
Ashley Merritt  
Francis and Marianna Mirabello  
Chi and Lourdes Mo  
Joan Mower  
Heather and John Murphy  
Dan Negoianu and Katya Rascovsky  
Lauren and Matthew Nix  
Deana and Eric Nordstrom  
Maureen and Pat O'Hara  
Craig Oliner and Alyson Owen  
Samuel Peik and Anne Shuppy  
Julie and Marshall Portnoy  
Katherine E. Preston  
Benjamin and Nina Proce  
Ann and Thomas Purcell  
Nina Radcliff  
Pedro and Sara Raposo  
Christine Reeves  
Janine Remillard and David Tristano  
Darlene and James Renken  
Andres and Lauren Hansen Restrepo  
Terri Schmitt  
Adam and Christina Schoon  
Frank and Kathleen Seidman



Lucy Bell Newlin Sellers  
Adrienne Shaeffer and Mischa Wheat  
Paul and Susan Shaman  
Jeffrey and Kristan Slotterback  
Samuel and Sandra Smith  
Ann and Marc J. Sonnenfeld  
Nicholas J. Staffieri  
Christina and Marty Stipicevic  
Fred and Kathy Taht  
Gordon Chaplin and Sarah Teale  
Kirk J. Thieroff  
Clayton and Rebecca Thomas  
Joan and William Thomas  
Alfred and Andrea Trubin  
Jack and Jane Turner  
UBS  
Joan and Ralph Widner  
Carol and John Winkler



Fiscal Year 2024

\$1,000,000 and Up

Anonymous

\$200,000 to \$999,999

Arcadia Foundation  
Emily and Ted Daeschler  
ExxonMobil  
Pew Center for Arts and Heritage

\$100,000 to 199,999

Albert M. Greenfield Foundation  
The Boeing Company  
E. Rhodes and Leona B. Carpenter Foundation  
Anthony Marich, Jr.♦  
GlaxoSmithKline  
Good Samaritan, Inc.  
David and Jacqui Griffith  
The Horace W. Goldsmith Foundation  
Kline & Specter, P.C.  
LTM Family Foundation  
Linda and Tom McCarthy

\$50,000 to \$99,999

Jeffrey A. Beachell  
Jeff Benoliel and Amy Branch  
Jean G. Bodine♦  
Jenny Rose and Gus Carey  
The Charles E. Ellis Grant and Scholarship Fund  
Comcast NBCUniversal  
Educational Opportunities LLC  
Jason and Katy Friedland  
Roberta E. Gausas and Allen J. Model  
Jenny Rose and Gus Carey Family Charitable Fund  
JHD Gift Fund  
Marshall-Reynolds Foundation

♦ Deceased

The McEwen Family Scholarship Fund at Modern Group Ltd.  
Edward A. Montgomery Jr.  
Art and Carol Silverman  
Susan B. and John F. Smith IIII

\$25,000 to \$49,999

Joshua and Tracy Anthony  
Joseph F. Baker and William Shaw Mulherin  
Julian and Lois Brodsky  
Elaine W. Camarda and A. Morris Williams, Jr.  
Erica and Robert Carpenter  
Christian R. & Mary F. Lindback Foundation  
Abbie and Patrick Dean  
Mark and Suzanne Eveland  
Green Mountain Energy  
Eric and Jean Hacherl  
Helen D. Groome Beatty Trust  
Hess Foundation, Inc.  
Jane C. MacElree Family Foundation  
John and Susan Smith Family Fund  
Julian A. and Lois G. Brodsky Foundation  
Leo Model Foundation, Inc.  
Carol and William G. Lyons  
Jane C. MacElree  
Sandra Lee McLean  
Annie and Jeffrey Nielsen  
OOS Charitable Corporation  
Robert M. and Susan W. Peck  
Jean Preston  
Reliant Energy Northeast  
Elizabeth and Gerald B. Rorer  
The Rorer Foundation, Inc.  
Saint-Gobain  
Sixers Youth Foundation  
Cameron C. and John Jeming Soroko  
West Pharmaceutical Services, Inc.

\$10,000 to \$24,999

Jane and John Bales  
Suzanne Biemiller and Rob MacRae  
Blue Sky Family Foundation

The Charles Wentz Carter Memorial Foundation  
Dana and Neil Cohen  
Maureen Craig and Glenn Goldberg  
Christina and Christopher Crockett  
E. Walker Mulherin, Jr. Fund of the Community Foundation of Greater Memphis  
Ralph C. Eagle Jr.  
The Essential Foundation  
Marilyn Fishman  
Pat and Dan Fromm  
Marc and Sharon Gold  
Horner Foundation  
Hoxie Harrison Smith Foundation  
John and Patricia Imbesi  
Michael Kaplan  
Karen and Wayne Lattuca  
Jeanette Lerman-Neubauer and Joe Neubauer  
The McLean Contributionship  
Bill and Katie McNabb  
Millrace Foundation  
Ranney and Theresa Moran  
Neubauer Family Foundation  
Organon  
Origlio Beverage  
Patriarch Family Foundation  
Philadelphia Shell Club  
Reni and Ron Mammen Philip  
Saint-Gobain Corporation Foundation  
Maude de Schauensee  
Corinne J. Stahl  
Michael Tucker and Renee Hogue Tucker  
Rock and Valerie Vitale  
The Wawa Foundation  
Wawa, Inc.  
The Wayne and Karen Lattuca Charitable Fund

\$5,000 to \$9,999

Peter A. Benoliel and Willo Carey  
Brian R. Ford Sr. Family Fund  
Caroline J.S. Sanders Trust I  
The Christopher Ludwick Foundation  
Cornell University CALS

The Cotswold Foundation  
Delaware Valley Ornithological Club  
Dolfinger-McMahon Foundation  
Sandra S. Drayer  
Jane I. Earle  
Alexandra Edsall and Robert Victor  
Brian and Evelyn Ford  
Carol Gebhardt  
Elizabeth H. Gemmill  
Gretchen and Jay Riley Gift Fund  
Penelope P. Harris  
Ellen Harvey and Tad G. Sperry  
Jennifer and Kevin Kowalick  
Joanna McNeil Lewis  
Maxine S. Lewis  
Elizabeth P. McLean  
Jeffrey D. and Lisa M. Miller  
Melissa Morris and Miguel Perez  
NRG Energy Inc  
Barbara Oldenhoff  
Barbara and Michael Perilstein  
Philip Family Donor Advised Fund of BOA Charitable Gift Fund  
Post Brothers  
Republic Bank  
Joe and Kim Reynolds  
Gretchen and Jay Riley  
John P. Schmidt  
Schmidt Family Foundation  
The Sparvey Fund  
Robert and Suzanne Welsh  
William Penn Foundation

\$2,500 to \$4,999

Myron and Sheila Bassman  
John and Kat Berkowitz  
R. Kent and Susan Cadwalader  
Clean Tech Services, Inc.  
Amy and R. Putnam Coes III  
Gudrun Dauner and Derick Dreher  
Rodney D. Day III  
Nancy and V. Richard Eales



Barbara Edelstein  
Mary L. Felley  
The Franklin Institute  
Yalta Gilmore-Reed and Michael Reed  
Janice T. Gordon  
The Health Federation of Philadelphia  
Jane and Paul Heintz  
Katherine Hovde and Kenneth Kulak  
Independence Foundation  
Scott and Yardly Jenkins  
Janet S. Klein  
John T. Lehman  
Elizabeth R. McLean  
Jon Merwin  
Arthur E. Newbold IV  
Chuck Pennoni  
Pennoni Family Foundation  
Renewal by Andersen of Greater Philadelphia  
Jewel and W. Hart Rufe III  
Bruce and Joanne Shanzer  
Alexis and Max Tuttleman  
The Tuttleman Foundation  
Vicinity Energy  
Minturn T. Wright III

\$1,000 to \$2,499

Anonymous (3)  
Franny and Franny Abbott  
Cynthia H. and John A. Affleck  
Affleck Family Charitable Trust  
Alyson N. Owen-Craig M. Oliner Family Charitable Fund  
Ellen G. Anderson  
Aqua Charitable Trust  
Archbold Hufty Leidy Foundation  
Valerie A. Arkoosh and Jeffrey T. Harbison  
Ellen Asplundh  
Austelle Foundation  
James and Janet Averill  
Amy and David Badler  
Badler Family Fund  
Wallace Beard and Joseph O'Hare  
Richard Belas and Judith Soltz  
Bluestone Foundation  
Brandywine Global  
Bill and Sheryl Bullitt  
Susan Catherwood  
Catherwood Family Fund  
Christopher B. Asplundh Family Fund  
L. Elizabeth Cohen

Ruth M. Colket  
David and Kimberly Colville  
Sally Conyne and Frank B. Gill  
Patty and Rob Delany  
Anne C. Dillon  
Peter Dorofy  
Elizabeth P. McLean Charitable Fund  
Ellie and Tom Elkinton  
Robert W. Ellis  
Peter A. Evans  
Pamela and Roderick Gagne  
Alexandria Garrity  
The George & Elizabeth Gephart Charitable Fund  
Elizabeth S. and George W. Gephart Jr.  
Gilroy and Lillian Roberts Charitable Foundation  
James Green and Rosalind Remer  
Mark and Vivian Greenberg  
Hassel Foundation  
Lisa K. Hastings  
Barbara D. Hauptfuhrer  
Holt Weil Fund  
Hufty Foundation  
JacobsWyper Architects

The James & Janet Averill Charitable Fund  
Brooke and Tom Katzenbach  
Katzenbach Family Charitable Fund  
L. K. Hastings Charitable Fund  
The Lapham Family  
Courtney and Page Leidy  
Frances H. Leidy  
Samuel and Susan Madeira  
Hugh and Trina Vaux McCauley  
Marina McDougall and Zane Vella  
Jim and Joan Moore  
Mary Morton  
Joan Mower  
Diane L. Myer  
National Aviary in Pittsburgh Inc.  
Emily Northington  
Caitlin and Evan O'Brien  
Craig Oliner and Alyson Owen  
Ann and Lanny R. Patten  
Cynthia and Robert Pizziketti  
George and Kathy Putnam  
Margaret and Tom Ralph  
Remer Green Family Fund  
Nicole Juday Rhoads and Samuel V. Rhoads  
Richard Belas and Judith Soltz Fund  
Brian Robbins and Jennifer Merves Robbins  
Robert and Marie Benz Charitable Foundation  
The Robert P. and Barbara D. Hauptfuhrer Philanthropic Fund  
The Rounds  
Bonnie Schorske  
Alfred E. and Patricia R. Schuyler  
Stephen Smith  
Sidney and Stewart Spahr  
Jamie Stewart  
Richard and Sheryl Tregerman  
United Way of Greater Philadelphia and Southern New Jersey  
Deborah Holt Weil  
Jon Landau and Signe Wilkinson  
Catherine and Stephen Wong  
Wong Giving Fund  
Catherine A. Worrall



\$500 to \$999

- Anonymous (2)
- Bernard and Nancy Anderson
- Cindy and Pierce Archer
- Jean Barrell
- Mary Jane Barrett and John A. Terrill
- Gudrun and T. Peter Bennett
- Frederick and Nancy Bissinger
- Barbara and Clarke Blynn
- The Blynn DA Fund
- Elinor Hosterman Buck and James M. Buck III
- The Buck Family Fund
- Christopher B. Chandor
- Cheryl and Radcliffe Cheston
- The Cliffe and Cheryl Cheston Charitable Fund
- Carol and Richard Collier
- Michael Conway and Laura Vanderkam
- Eileen and Lee Mathias Charitable Fund
- Elizabeth and Robert Lukens Charitable Fund
- F. L. Bissinger, Inc.
- Jean Flood and Paul Nemeth
- Marilyn Forney♦
- Forney Family Foundation
- A. Cope and Annas M. Garrett
- Marshal and Tamar Granor
- Alice and Peter Hausmann
- Alec and Jessica Haverstick
- Gail W. Hearn
- Lois V. Hill
- Faith A. Horowitz and Richard A. Speizman
- Lesley Ann Hughes
- Pemberton Hutchinson
- James and Amanda Rice Family Charitable Fund
- Craig N. and Sally Johnson
- Mitchell Kelly and Tracy Russo
- Kent-Van Alen Fund
- Robert Locke and Sarah Thorne-Locke
- Betsy and Bob Lukens

♦ Deceased

- John Lundberg and Lucinda McDade
- Myles Lynk
- Rose M. Marinaro
- Eileen and Lee Mathias
- Steven G. Maurer
- Colleen McCauley
- Susan P. Mucciarone
- James and Lori Murphy
- Douglas and Frances Nadel
- The Nelson S. Talbott Foundation
- Nordstrom
- André and Jeannine Payne
- The Peter O. and Alice E. Hausmann Family Charitable Fund
- David and Sarah Reiner
- Shirley Reiner
- Residents' Association of Waverly Heights
- Amanda and James Rice
- Rock & Valerie Vitale Charitable Fund
- Michael Rueter and Julie Stone
- Terri Schmitt
- Paul and Susan Shaman
- Karen and Robert Sharrar
- The Speizman-Horowitz Fund
- Patricia Tyson Stroud
- T. Rowe Price Charitable
- Tamar and Marshal Granor Tzedekah Fund
- Thorne-Locke Charitable Fund
- University of Pennsylvania
- Upsalquitch Fund
- Bonnie and James L. Van Alen
- David R. Wilmerding
- Charles E. and Kimberley A. Wright
- David and Karen Wright

\$175 to \$499

- Anonymous (3)
- George Ahern and Marge McEntee
- Dennis and Jo Ambrose
- Anglers Club of Philadelphia
- Antique Study Group
- George Armistead
- Barbara and Jonathan Baskin

- Maurice Baynard
- Jane N. Beatty
- Jennifer and Mark Berlinger
- Victoria Binetti
- Gina and Lawrence Brent
- Elizabeth and Thomas Bruno
- Meghan Bucci
- Stephen Cantando and Trent Rhodes
- Gordon Chaplin and Sarah Teale
- Suzanne Chiavari
- Joan and Joel Chinitz
- Cathy Collautt and Sam Stein
- Denise Cowie and L. Stuart Ditzen
- Michael Danziger
- David and Eileen Eskin Family Fund
- Dennis Dragon and Carla Van Istendal
- Jonathan Dunsay and Caroline Tiger
- Earl and Helen Poole Memorial Fund
- Lynda and Van Eckes
- Jeffrey Edelman
- Howard Eisen and Judith Wolf
- Roberta and Saul Epstein
- David and Eileen Eskin
- Jerald Fagliano and Mara Natkins
- Harvey and Marian Forman
- Kenneth and Susan Frank
- General Roofing and Contracting
- Ariel and Lisa Givner
- Alan and Greta Greenberger
- Tucker C. Gresh
- Allison and Andrew Hamilton
- Bonita and James Hay
- Gayl and Herbert Henze
- Fredrik and Katherine Hiebert
- The Hill at Whitemarsh
- Da-Shih Hu
- Louise R. Johnston
- Jonathan and Barbara Baskin Family Charitable Fund
- Kathy Jones-Nestor and Paul Nestor
- Tim Kaldewey and Lynn Wu
- Eldridge T. Katzenbach Jr.
- Carol and Richard C. Kovach

- Carol Krawczyk and Paul Wileyto
- Rebecca Kriss and Nicholas Stanley
- Lois Kuter
- Fred LaValley and John Whitenight
- Robert A. Lawler and Thomas G. Lawler
- Jonathan Loeb and Catherine Loh
- James and Paula MacCombie
- Roberta A. Martin
- Charles E. Mason
- Mason Family Charitable Account
- Elizabeth Mataset and William Matulewicz
- Charles and Kathy McCulley
- Kathy Howard and Daryl Mecklem
- Elizabeth Mednick
- Ashley Merritt
- Francis and Marianna Mirabello
- Chi and Lourdes Mo
- Heather and John Murphy
- National Philanthropic Trust
- Joanne and Joseph Noreika
- Adelina and Michael Porvaznik
- Katherine E. Preston
- Joseph and Marlene Ramsay
- Pedro and Sara Raposo
- James E. Renken
- Suzanne Roth
- Eric and Paulina Rugart
- Kyle and Lizzie Salata
- Frank and Kathleen Seidman
- Lucy Bell Newlin Sellers
- Anthony and Wei Shaw
- Ed and Marie Shinn
- Corey R. and Jonne K. Smith
- Ann Snyder
- Ann and Marc J. Sonnenfeld
- Nicholas J. Staffieri
- Temple Beth Hillel-Beth El
- Matthew Tom
- Jack and Jane Turner
- Margaretta Walton and Christina Wiskowski
- Nina Weisbord and George Wood
- Joan and Ralph Widner



Fiscal Years 2023 & 2024

\$175+ Donors to Vertebrate Paleontology Endowment

In November 2023, we celebrated the retirement of Edward "Ted" Daeschler, PhD, and his 36-year career at the Academy by opening the exhibit *Life onto Land: The Devonian* and establishing an endowed fund for the Vertebrate Paleontology Department. The Academy is incredibly thankful for our donors who invested in the future of vertebrate paleontology research — with your support, the Academy has the opportunity to build on decades of discoveries, continue contributing new science to the field, and deepen our understanding of life's origins so that we may help to solve the problems of tomorrow.

- Anonymous
- David and Kimberly Colville
- Emily and Ted Daeschler
- Alec Haverstick and Jessica Haverstick
- James and Amanda Rice Family Charitable Fund
- JHD Gift Fund
- Karen and Wayne Lattuca
- LTM Family Foundation
- Linda and Tom McCarthy
- Robert M. and Susan W. Peck
- Amanda and James Rice
- Corinne J. Stahl
- Hugh and Trina Vaux McCauley
- The Wayne and Karen Lattuca Charitable Fund

\$175+ Donors to Named Endowments

Endowment funds provide a source of sustainable support for a variety of Academy initiatives, from postdoctoral research to annual lecture series. If you are interested in contributing to an endowment or wish to establish one in your name, please contact the office of Institutional Advancement at 215-299-1182 or friends@ansp.org.

- Jane and John Bales
- Elizabeth Bales and Michael Dell'Angelo
- Jean G. Bodine♦
- Brooke and Tom Katzenbach
- Eldridge T. Katzenbach Jr.
- Katzenbach Family Charitable Fund
- John Lundberg and Lucinda McDade
- Anthony Marich, Jr.♦
- Art and Carol Silverman





\$175+ Donors to WINS 40th Celebration

Albert M. Greenfield Foundation  
Jane and John Bales  
Myron and Sheila Bassman  
Jeffrey A. Beachell  
The Boeing Company  
Elaine W. Camarda and A. Morris Williams, Jr.  
Jenny Rose and Gus Carey  
Erica and Robert Carpenter  
The Charles E. Ellis Grant and Scholarship Fund  
Comcast NBCUniversal  
David and Eileen Eskin Family Fund  
Abbie and Patrick Dean  
David and Eileen Eskin  
Exelon Foundation  
Fiduciary Trust International  
Marilyn Fishman and James MacElderry♦  
Roberta E. Gausas and Allen J. Model  
Yalta Gilmore-Reed and Michael Reed  
GlaxoSmithKline  
Carole Chew Williams Green  
Hamilton Family Charitable Trust  
Ellen Harvey and Tad G. Sperry  
Cynthia and Martin Heckscher  
Helen D. Groome Beatty Trust  
Hess Foundation, Inc.  
Jessie B. Hill  
Horner Foundation  
Hoxie Harrison Smith Foundation  
John and Patricia Imbesi  
Jenny Rose and Gus Carey Family Charitable Fund

Leo Model Foundation, Inc.  
Charles E. Mason  
Mason Family Charitable Account  
Carolyn McCreary  
Elizabeth R. McLean  
Sandra Lee McLean  
Millrace Foundation  
Edward A. Montgomery Jr.  
Morgan Lewis  
Joan Mower  
Patriarch Family Foundation  
Katherine E. Preston  
Janine Remillard and David Tristano  
Saint-Gobain  
Lois M. and Stanley A. Singer  
Susan B. and John F. Smith III  
Catherine and Stephen Wong  
Wong Giving Fund

♦ Deceased

1812 Society Members

For many years, the Academy’s most dedicated supporters have invested in our future by including the Academy in their estate plans. The Academy’s Board of Trustees established the 1812 Society in honor of our most forward-thinking supporters whose contributions have sustained the Academy’s growth for the past two centuries. To learn more about planned giving, please contact our Office of Institutional Advancement at 215-299-1182 or friends@ansp.org.

Anonymous (4)  
Joseph F. Baker  
Myron and Sheila Bassman  
Vivian K. Blank♦  
Jean G. Bodine♦  
John S. Carson  
Joan and Joel Chinitz  
Donald Cleaver♦  
Luther A. Clement♦  
Walter Coley♦  
Sally Conyne and Frank Gill  
Amy and George Dick  
Brooke♦ and Lenora Dolan  
Margaret Chew Dolan  
Thomas Dolan IV♦  
Thomas Dolan V  
Jane I. Earle  
Robert W. Ellis  
Claudine Farrand and Daniel Moerman  
Paul M. Felton II♦  
Keri Fisher and Sean Rhoads  
Lin Floyd  
Barbaras and Len Frank  
Julia W. Frick♦  
Emilio García  
Elizabeth S. and George W. Gephart Jr.  
S. Page Hartley♦  
Cynthia and Martin Heckscher

Lois V. Hill  
Steven Leshner and Ivy Silver  
Anthony J. Marich, Jr.♦  
Edward A. Markart Jr.  
Jacqueline Markart  
Elizabeth P. McLean  
Robert M. Peck  
Elizabeth P. Petit  
Jean and Seymour♦ S. Preston III  
Sarah and Philip♦ Price Jr.  
Francis H. Rasmus♦  
Ann and Frank Reed  
Bob and Peg Ridgely  
Harriet H. and Robert♦ Robertson  
Gary and Phyllis Rosenberg  
Elizabeth and Nicholas♦ Ruggeri  
John P. Schmidt  
Pamela and Philippe Serra  
Art and Carol Silverman  
Patricia Tyson Stroud  
Minturn T. Wright III







Memorial Gifts

Joseph F. Baker and William Shaw Mulherin, *in memory of E. Walker Mulherin, Jr.*  
Robert W. Ellis, *in memory of Frances S. Ellis and Albert J. Visco*  
Jerry Freilich, *in memory of R. Tucker Abbott*  
A. Cope and Anna♦ M. Garrett, *in memory of Julie Reich*  
Joanna Littleton, *in memory of Cecily Darwin Littleton*  
Katherine E. Preston, *in memory of Seymour S. Preston III*  
David and Sarah Reiner, *in memory of Van Reiner*

In Memory of John Brame Witmer

Jean Brubaker  
Barbara and David Dorway  
Janet Holloway  
Katherine Lucas  
Reisa Mukamal  
Rehoboth Concert Band, Inc.  
Esta Schwartz  
Julia Tiernan  
Jacqueline and Tim Tirendi  
Kathleen Ziga

In Memory of Ruth Patrick

Anonymous (2)

♦ Deceased

Honorary Gifts

Anonymous, *in memory of Thomas Dolan*  
Joseph F. Baker and William Shaw Mulherin, *in honor of Mr. and Mrs. Thomas M. Tolleson, Jr.*  
Jennifer Holmes, *in honor of Ernie Schuyler*  
Myles Lynk, *in honor of Michael Reed, Esq. and his family*  
Melissa Morris and Miguel Perez, *in honor of Jason Weckstein*  
Richard and Sheryl Tregerman, *in honor of John Eskate*  
Mary-Jo Tsikitas, *in honor of Irene Lin on her birthday*  
John Wehmiller, *in honor of Alejandra Martinez-Melo and Jocelyn Sessa*

In Honor of Jane and John Bales

David and Eileen Eskin  
Beth Haas  
Lois and Stanley Singer

In Honor of Edward “Ted” Daeschler on his Retirement

Allison and Andrew Hamilton  
The Haverstick Family  
Linda and Tom McCarthy  
Amanda and James Rice  
Corinne J. Stahl  
Deborah Holt Weil

In Honor of Kevin Kowalick

Daphne Hu and Benjamin Sun  
Carolyn McCreary

In Honor of Marc Gold on his Birthday

Jerry and Wendy Santoro  
Barbara and Gene Spector  
Norman and Sharon Spindel  
Bob and Marilyn Steiner  
Bonnie and Marc Zimmerman

In Honor of Robert Peck

Antique Study Group  
The Hill at Whitemarsh

In Honor of Nathan Rice

Jean Barrell  
Katherine W. Skalak

Academy Collaborators

Academy Collaborators are much more than members. Collaborators take an active role in our mission to understand the natural world and inspire everyone to care for it. Each level is named for one of Earth’s vital ecosystems, to inspire curiosity and celebrate the remarkable collaborations that make life in these habitats possible. As the health of an ecosystem relies on an extraordinary network of diverse life-forms working together, the Academy relies on the collaboration of our partners, members and donors. We recognize the following Academy Collaborators for their generous unrestricted support of the Academy between July 1, 2022 and June 30, 2024. To learn more about becoming an Academy Collaborator, please contact our Individual Giving team at friends@ansp.org.

Seagrass Circle

Jeffrey A. Beachell  
Jeff Benoliel and Amy Branch  
Julian and Lois Brodsky  
Abbie and Patrick Dean  
Roberta E. Gausas and Allen J. Model  
David and Jacqui Griffith  
Rod and Kerry Henkels  
Jane C. MacElree  
Alexandra U. Moede  
Robert M. and Susan W. Peck  
Jean Preston  
Elizabeth and Gerald B. Rorer  
Susan B. and John F. Smith III  
Oona Sperr  
Constance and Sankey Williams

Annie and Jeffrey Nielsen  
Herbert T. Rorer  
Corinne J. Stahl  
Michael Tucker and Renee Hogue Tucker

Salt Marsh Circle

Joseph F. Baker and William Shaw Mulherin  
Peter A. Benoliel and Willo Carey  
Susan Catherwood  
Jane I. Earle  
Alexandra Edsall and Robert Victor  
Brian and Evelyn Ford  
Elizabeth H. Gemmill  
Penelope P. Harris  
Ellen Harvey and Tad G. Sperry  
Joanna McNeil Lewis  
Maxine S. Lewis  
Bonnie and Peter McCausland  
Jeffrey D. and Lisa M. Miller  
Barbara Oldenhoff  
Barbara and Michael Perilstein  
Reni and Ron Mammen Philip  
Post Brothers  
Joe and Kim Reynolds  
Gretchen and Jay Riley  
John P. Schmidt  
Cameron C. and John Jeming Soroko  
Robert and Suzanne Welsh

Nancy B. Davis  
Rodney D. Day III  
Nancy and V. Richard Eales  
Barbara Edelstein  
Mary L. Felley  
Janice T. Gordon  
Latasha Harling  
Jane and Paul Heintz  
Jessie B. Hill  
Katherine Hovde and Kenneth Kulak  
Scott and Yardly Jenkins  
Janet S. Klein  
Jennifer and Kevin Kowalick  
John T. Lehman  
Arthur E. Newbold IV  
Chuck Pennoni  
Yalta Gilmore-Reed and Michael Reed  
Jane and Scott Satterfield  
Bruce and Joanne Shanzer  
Alexis and Max Tuttleman  
Minturn T. Wright III

Anne C. Dillon  
Margaret Chew Dolan  
Peter Dorofy  
Sandra S. Drayer  
Ellie and Tom Elkinton  
Peter A. Evans  
Keri Fisher and Sean Rhoads  
Pamela and Roderick Gagne  
Alexandria Garrity  
Margaret and Richard Greenawalt  
Mark and Vivian Greenberg  
Barbara D. Hauptfuhrer  
Louise A. and Peter H. Havens  
Gail W. Hearn  
Dennis Hummel  
James King and Joan Nathan  
The Lapham Family  
Carter R. Leidy  
Courtney and Page Leidy  
Karen and William Mestichelli  
Leslie Anne Miller and Richard Worley  
Jim and Joan Moore  
Diane L. Myer  
Joseph A. O'Connor Jr.  
Ann and Lanny R. Patten  
Cynthia and Robert Pizziketti  
Margaret and Tom Ralph  
Nicole Juday Rhoads and Samuel V. Rhoads  
Brian Robbins and Jennifer Merves Robbins  
Alfred E. and Patricia R. Schuyler  
Stephen Smith  
Sidney and Stewart Spahr  
Jamie Stewart  
Deborah Holt Weil  
Peter and Susan Wilmerding  
Catherine and Stephen Wong

Meadow Circle

Cynthia H. and John A. Affleck  
Sarah S. Alfadl  
Leigh Altadonna and Carol Hresko-Altadonna  
Ellen G. Anderson  
James and Janet Averill  
Amy and David Badler  
Wallace Beard and Joseph O'Hare  
Gudrun and T. Peter Bennett  
Kenneth S. Blackney and Robert R. Ditto  
Bill and Laura Buck♦  
Bill and Sheryl Bullitt  
Ruth M. Colket  
Sally Conyne and Frank B. Gill  
Scott and Shirley Cooper  
Christina and Christopher Crockett

Rainforest Circle

Myron and Sheila Bassman  
John and Kat Berkowitz  
John and Julia Buonagurio  
R. Kent and Susan Cadwalader  
Jenny Rose and Gus Carey  
Amy and R. Putnam Coes III  
Emily and Ted Daeschler  
Gudrun Dauner and Derick Dreher



Pinelands Club

Anonymous  
Franny and Franny Abbott  
Dennis and Jo Ambrose  
Bernard and Nancy Anderson  
Cindy and Pierce Archer  
Ellen Asplundh  
Nathan Balsham  
Mary Jane Barrett and John A. Terrill  
Richard Belas and Judith Soltz  
Frederick and Nancy Bissinger  
Barbara and Clarke Blynn  
Elinor Hosterman Buck and James M. Buck III  
Christopher B. Chandor  
Cheryl and Radcliffe Cheston  
Nancy and Robert Cleveland  
Barbara Cobb  
Carol and Richard Collier  
Michael Conway and Laura Vanderkam  
Michael Danziger  
William J. Frezel  
Amanda Friedrich and Marie Mayer  
A. Cope and Anna M. Garrett\*  
Elizabeth S. and George W. Gephart Jr.  
Margaret Godbey and David Hellen  
Kara and John Goodchild  
James E. Gould and Page Talbott  
Marshal and Tamar Granor  
James Green and Rosalind Remer  
Tucker C. Gresh  
Nancy G. Harris  
Lisa K. Hastings  
Alice and Peter Hausmann  
Alec and Jessica Haverstick  
Lois V. Hill  
Faith A. Horowitz and Richard A. Speizman  
Kathy Howard and Daryl Mecklem  
Daphne Hu and Benjamin Sun  
Lesley Ann Hughes  
Pemberton Hutchinson  
Craig N. and Sally Johnson  
Mitchell Kelly and Tracy Russo  
Donald Krapf and Laura Raab  
Jon Landau and Signe Wilkinson  
Fred LaValley and John Whitenight  
Robert Locke and Sarah Thorne-Locke

Betsy and Bob Lukens  
Samuel and Susan Madeira  
John Makara and Kathy Patterson  
Rose M. Marinaro  
Eileen and Lee Mathias  
Steven G. Maurer  
Colleen McCauley  
Hugh and Trina Vaux McCauley  
Marina McDougall and Zane Vella  
Elizabeth P. McLean  
Alex and Nancy Miller  
Susan P. Mucciarone  
James and Lori Murphy  
Douglas and Frances Nadel  
Emily Northington  
Craig Oliner and Alyson Owen  
André and Jeannine Payne  
Joseph and Marlene Ramsay  
David and Sarah Reiner  
Shirley Reiner  
Marie and Robert Benz  
Michael Rueter and Julie Stone  
Terri Schmitt  
Bonnie Schorske  
Karen and Robert Sharrar  
Patricia Tyson Stroud  
Bonnie and James L. Van Alen  
Rock and Valerie Vitale  
David R. Wilmerding  
Catherine A. Worrall  
Charles E. and Kimberley A. Wright  
David and Karen Wright

Headwaters Club

Anonymous  
George Ahern and Marge McEntee  
George Armistead  
Maurice Baynard  
Jane N. Beatty  
Sylvia R. Beck and Jay L. Federman  
Jennifer and Mark Berlinger  
Victoria Binetti  
Jeff and Kristen Block  
Nathaniel Bordy and Mary Alice Hartsock

Scott Broer and Mark Weiss  
Elizabeth and Thomas Bruno  
Marie Brydges and Laura Cybulski  
Stephen Cantando and Trent Rhodes  
Gordon Chaplin and Sarah Teale  
Suzanne Chiavari  
Joan and Joel Chinitz  
Arthur M. Cohn  
Cathy Collautt and Sam Stein  
Alexandre Costabile and Susan Dando  
Denise Cowie and L. Stuart Ditzen  
Dena and James L. Dannenberg  
Elizabeth and Michael Dantonio  
Sophie B. Donaghy  
Dennis Dragon and Carla Van Istendal  
Jonathan Dunsay and Caroline Tiger  
Lynda and Van Eckes  
Jeffrey Edelman  
Alan and Natalie Eisen  
Howard Eisen and Judith Wolf  
Bonnie and Jay Eisner  
Roberta and Saul Epstein  
Lee Faden and Sharon Marcus  
Harvey and Marian Forman  
Dorcas A. and Frank B. Foster III  
Kenneth and Susan Frank  
The Garvin Family  
Ariel and Lisa Givner  
Alan and Greta Greenberger  
Bonita and James Hay  
Gayl and Herbert Henze  
Fredrik and Katherine Hiebert  
Lynda K. Hitschler  
Alexa and Michael Hogarty  
Kathy Jones-Nestor and Paul Nestor  
Tim Kaldewey and Lynn Wu  
Carol and Richard C. Kovach  
Carol Krawczyk and Paul Wileyto  
Rebecca Kriss and Nicholas Stanley  
Lois Kuter  
Robert A. Lawler and Thomas G. Lawler  
Erica and Ryan Leary  
Jonathan Loeb and Catherine Loh  
William A. Loeb

James and Paula MacCombie  
Roberta A. Martin  
Elizabeth Mataset and William Matulewicz  
Charles and Kathy McCulley  
Elizabeth Mednick  
Ashley Merritt  
Francis and Marianna Mirabello  
Chi and Lourdes Mo  
Mary Morton  
Heather and John Murphy  
Toni Murphy  
Dan Negoianu and Katya Rascovsky  
Deana and Eric Nordstrom  
Joanne and Joseph Noreika  
Kevin and Lauren Patterson  
Adelina and Michael Porvaznik  
Katherine E. Preston  
Benjamin and Nina Proce  
Pedro and Sara Raposo  
Christine Reeves  
Darlene and James Renken  
Suzanne Roth  
Eric and Paulina Rugart  
Kyle and Lizzie Salata  
Adam and Christina Schoon  
Frank and Kathleen Seidman  
Lucy Bell Newlin Sellers  
Paul and Susan Shaman  
Anthony and Wei Shaw  
Ed and Marie Shinn  
Jeffrey and Kristan Slotterback  
Corey R. and Jonne K. Smith  
Ann and Marc J. Sonnenfeld  
Nicholas J. Staffieri  
Kirk J. Thieroff  
Joan and William Thomas  
Julia Tiernan  
Matthew Tom  
Alfred and Andrea Trubin  
Jack and Jane Turner  
Nina Weisbord and George Wood  
Joan and Ralph Widner  
Carol and John Winkler

Government and Research Grants

American Littoral Society  
The Arcadia Foundation  
Barnes Foundation  
Conservation International  
Delaware River Basin Commission  
Exelon Foundation  
Fromm Foundation  
Good Samaritan, Inc.  
Institute of Museum and Library Services  
JASTECH Development Services Inc  
Maine Department of Environmental Protection  
Mural Arts Philadelphia  
National Fish and Wildlife Foundation  
National Institute of Health  
National Park Service - Upper Delaware Scenic and Recreational River  
National Science Foundation  
National Oceanic and Atmospheric Administration  
National Wildlife Federation  
New Jersey Department of Environmental Protection  
Partnership for the Delaware Estuary  
Pennsylvania Council on the Arts  
Pennsylvania Department of Community and Economic Development  
Pennsylvania Department of Environmental Protection  
Pennsylvania Fish and Boat Commission State Wildlife Grants Program  
Pennsylvania Historical and Museum Commission  
PEW Center for Arts and Heritage  
PowerCorpsPHL  
Re:wild  
Science Museum of Minnesota  
Sixers Youth Foundation  
Southwest Conservation District  
Stroud Water Research Center  
University of Kansas  
University of Pittsburgh  
United States Embassy in Equatorial Guinea - Malabo  
United States Geological Survey Upper Midwest Water Wisconsin Science Center  
Upstream Alliance  
Western Pennsylvania Conservancy  
Wild Resource Conservation Fund  
William Penn Foundation



Gifts to the Library and Collections

Jaqueline Bagley  
William Bouchard  
Delaware Valley Ornithological Club  
Jane Kim  
David Millstone  
Martha H. and I. Wistar Morris III  
Nancy Newhouse  
Marilou M. Simon  
Patricia Tyson Stroud  
Elliston Perot Walker\*

Gifts in Kind

The Boeing Company  
Walter Crimm  
Janney Montgomery Scott  
Victory Brewing Company

\* Deceased





As I prepare to step down as Chairperson of the Academy of Natural Sciences and from Drexel University's Board of Trustees on June 30, 2025, I find myself reflecting on the profound impact of our work.

Throughout my career in both for-profit and nonprofit sectors, I've been guided by a simple principle: putting grandchildren ahead of greed — all grandchildren. During my years at the helm, I have been fortunate to work with a remarkable group of trustees, staff, students and supporters that model that simple principle every single day across every aspect of their work.

The Academy, despite being the oldest natural history museum in the Americas, has never been more innovative, impactful or dynamic. Our strategic alliance with Drexel University has amplified our ability to address crucial environmental challenges through world-class research, education and community engagement. From our invaluable collections and groundbreaking research to our co-created public exhibits and award-winning community programs, we continue to deliver meaningful and measurable impact in an era that desperately needs environmental leadership.

The synergy between the Academy and Drexel has created a powerhouse of discovery and education. Together, we're better positioned than ever to drive positive change, albeit in ways that must be increasingly creative and cost-effective as we face today's challenges.

To my successor and our entire community: your charge is to expand this vital mission. I am confident that with your continued commitment our work will flourish and expand in new and exciting directions.

I am deeply grateful to the Academy staff, board and you — our tireless supporters — for the privilege of serving this remarkable institution. While my official role may be ending, my heart remains steadfastly committed to our purpose of being a force for nature for generations to come.

Warmly,

David E. Griffith  
Chair, Board of Trustees







**WRITER & EDITOR: BRIGETTE BROWN**

**DESIGN: AGILECAT**

**PHOTOGRAPHY: RAMON TORRES**

*(unless noted below)*

Pg. 9: *Gymnogyps californianus* by U.S. Fish and Wildlife Service;  
pg. 11, 12: Kamila Kuabara/ANS; pg. 12: Jason Weckstein/ANS;  
pg. 13, 16: Marina Potapova/ANS; Pg. 17–20: David Keller/ANS and  
Tanya Dapkey/ANS; Pg. 33–38: QL483.C5 D6: Donovan, Edward. *An  
epitome of the natural history of the insects of China*. 1798; QL616.R3:  
Renard, Louis. *Poissons, ecrevisses et crabes, de diverses couleurs  
et figures extraordinaires, que l'on trouve autour des isles Moluques  
et sur les côtes des terres Australes*. 1754; QL548.P35; Peale, Titian  
Ramsay. *Lepidoptera americana*. Vol. 1, no. 1. 1833; Pg. 39: Chris  
Henry/Unsplash; Pg. 41, 42: Andrew Kleiner/ANS; Pg. 41: Gabriel  
Jimenez/Unsplash; Pg. 59: Wood Duck by Anwar Abdul-Qawi



The mark of  
responsible forestry





---

*Founded in 1812, the Academy of Natural Sciences of Drexel University is a leading natural history museum dedicated to understanding the natural world and inspiring everyone to care for it.*

**A FORCE FOR NATURE®**

---

*A proud affiliate of*

**Drexel**  
UNIVERSITY